

# SERVICE PARTS

---

It is the policy of Coster Engineering to constantly improve its products whenever it is practical to do so.

Coster Engineering must therefore reserve the right to redesign or change its equipment or component parts thereof without incurring the obligation to install or furnish such changes on equipment previously delivered.

## INSTRUCTIONS FOR ORDERING PARTS

1. The reference numbers in the illustrations correspond to the numbers shown in the "Reference Number" column in the parts listing. The quantity in the "number required" column is the number of parts used in the accompanying illustration. The term "A/R" for number required indicates "as required" where the quantity may vary. Order all parts by their part number and description.
2. Always mention the identification number of the code and serial numbers found on the name plate of the unit on which the part is to be used. Much delay and confusion can be avoided when correct numbers are specified on parts order and correspondence.
3. Owner, order all parts through your local dealer.
4. Dealers must indicate how to ship; whether by truck, rail freight, express, or parcel post.
5. Collect phone calls are not accepted.
6. Address all orders for parts as follows:

**COSTER ENGINEERING**  
**217 E PLUM STREET**  
**MANKATO, MN 56001**  
**PH (844) 975-1100**  
**FAX (507) 549-1101**  
**costerwater.com**

## INSTRUCTIONS FOR RETURNING PARTS FOR ADJUSTMENT

1. To assure prompt handling of claims, your dealers should follow standard claim and forward claim procedures within thirty (30) days, of any part failure or malfunction believed to be a warranty claim.
2. No returned part will be accepted unless they are transportation prepaid and accompanied by the packing list, copy of the returned goods authorization form, or the packing list copy of the warranty claim form.
3. Parts returned should have a tag attached with sender's name and address clearly printed.

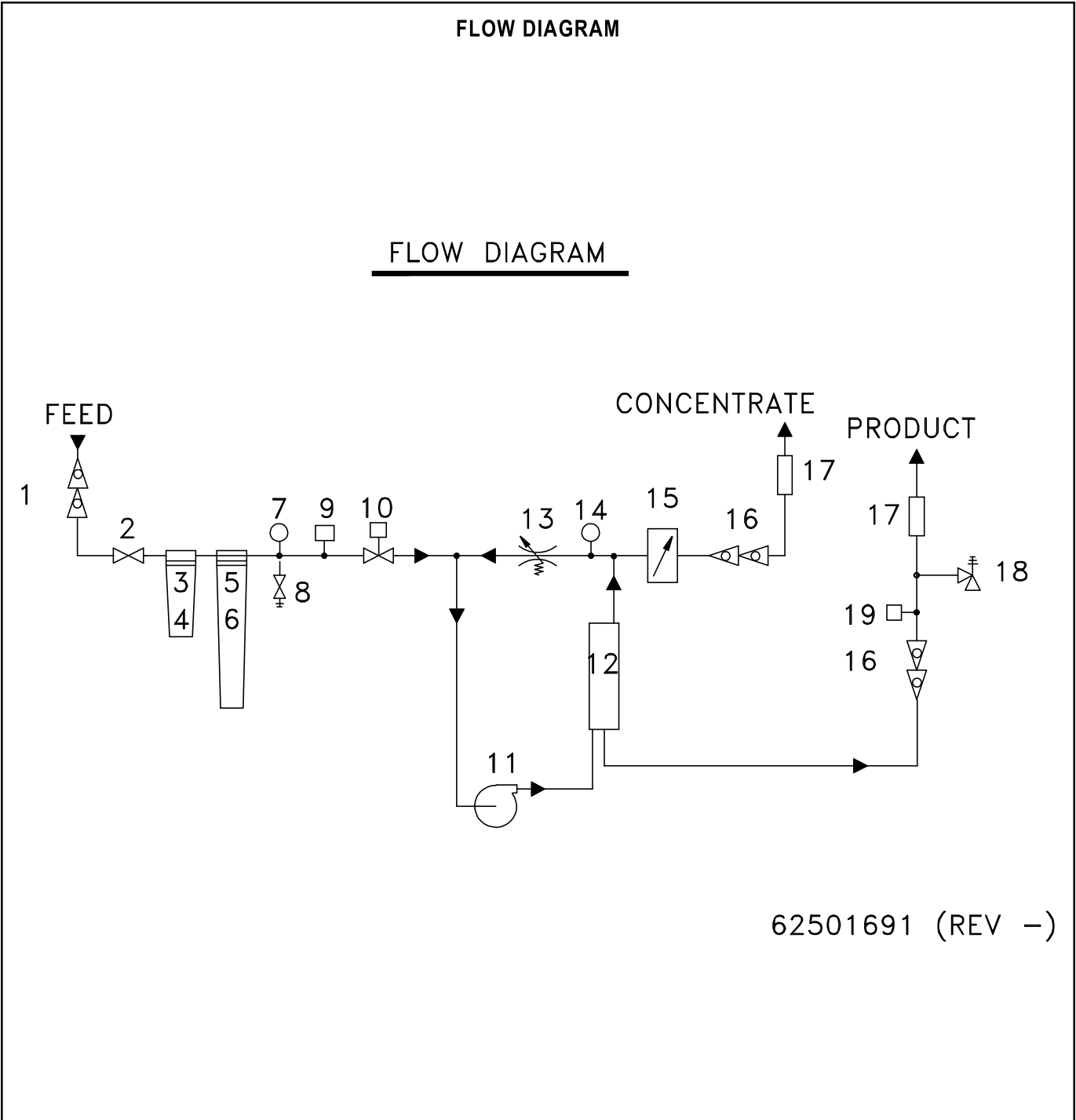
## DISCLAIMER

This supplement contains additional information that is specific to units. It is used in conjunction with the basic machine operator's manual which includes safety and operational information.

Retain all manuals for future reference. Read all and understand all manuals in their entirety before operation or service.

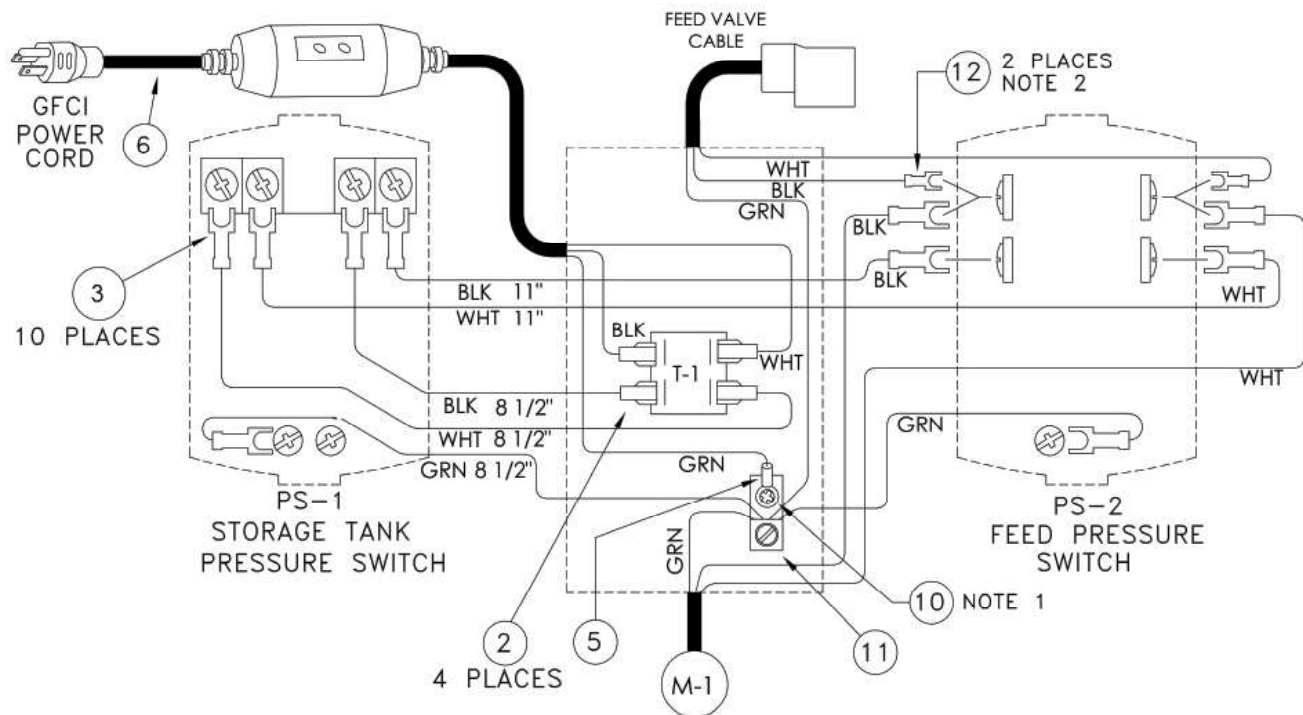
The information contained in this manual is subject to change without notice.

Coster Engineering shall not be liable for technical or editorial omissions made herein; nor for incidental or consequential damages resulting from the furnishing, performance, or use of this material.



REF. NO.	PART NUMBER	DESCRIPTION	QTY.	REF. NO.	PART NUMBER	DESCRIPTION	QTY.
1	625-004-329	Valve, 1/2" Double Check (Optional)	1	12	62501669	Formed Vessel Assembly, 4" EWM-4	1
2	62501652	Valve, 1/2" Ball, PVC	1	13	62502632	Needle Valve 1/4M x 3/8 Comp LF	1
3	625-001-560	10" Filter Housing	1	14	62502622	Pressure Gauge, 0-300 PSI Liquid Fill LF	1
4	625-002-392	10" Sediment Filter Cartridge	1	15	62501142	Orifice Plate, #75 EWM-4	1
5	625-004-588	20" Filter Housing	1	16	62501657	Valve, Double Check, 1/4"	1
6	625-005-822	20" Carbon Filter Cartridge	1	17	62501676	Flow Meter, .2-2 GPM (Optional)	2
7	62502627	Pressure Gauge, 0-100 PSI LF	1	18	62501090	Valve, Pressure Relief, 100 PSI	1
8	625-004-206	Valve, Sample Port 1/4"	1	19	62501594	Press Switch, 40-60 PSI	1
9	62501593	Press Switch, 5-10 PSI	1				
10	62501674	Valve, Solenoid 1/2", 120 VAC	1				
11	62502600	Pump Procon, 240 GPH (4" RO)	1				
	62500484	Motor, 1/2 HP	1				

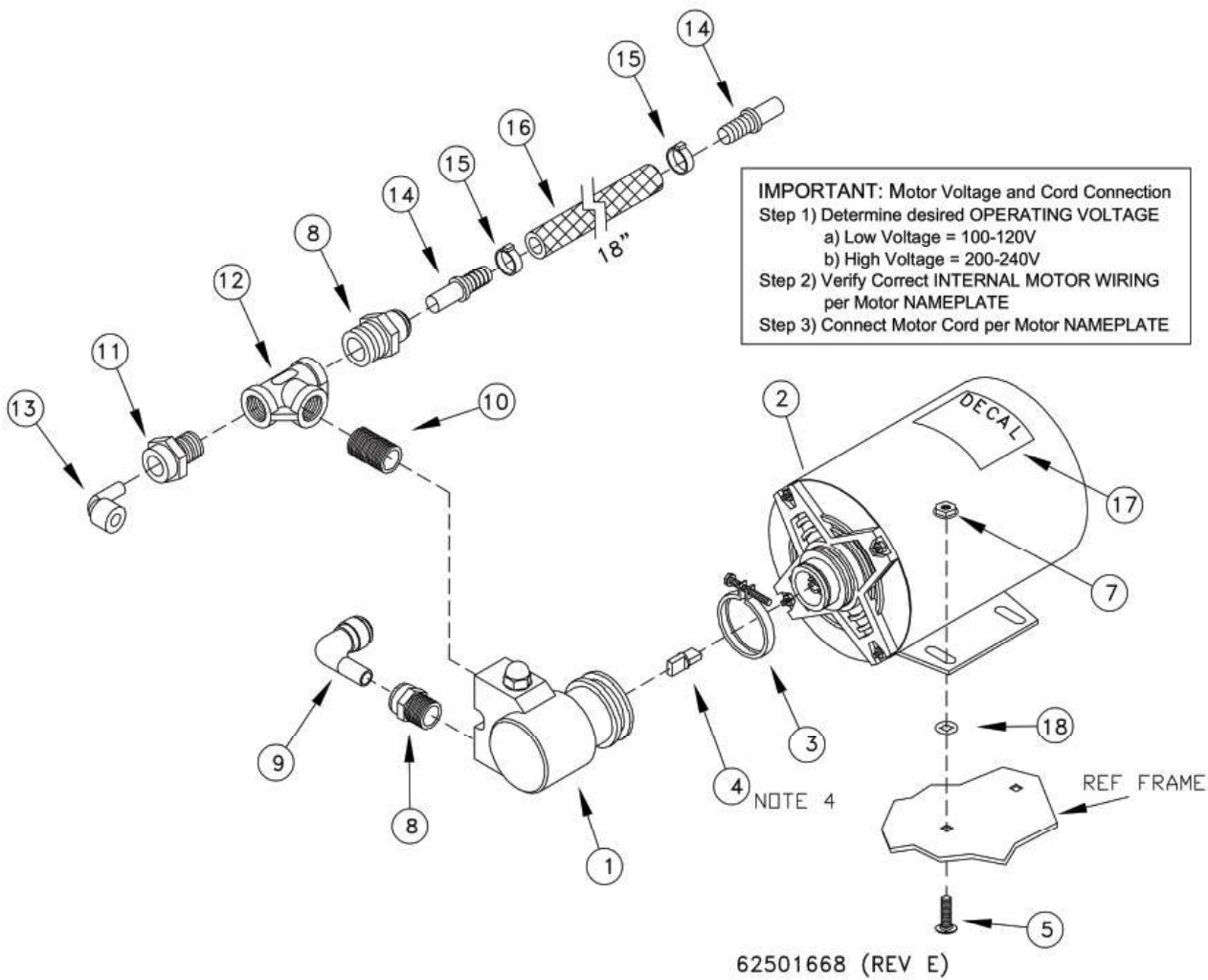
## ELECTRICAL BOX



62501675 REV F (2 OF 2)

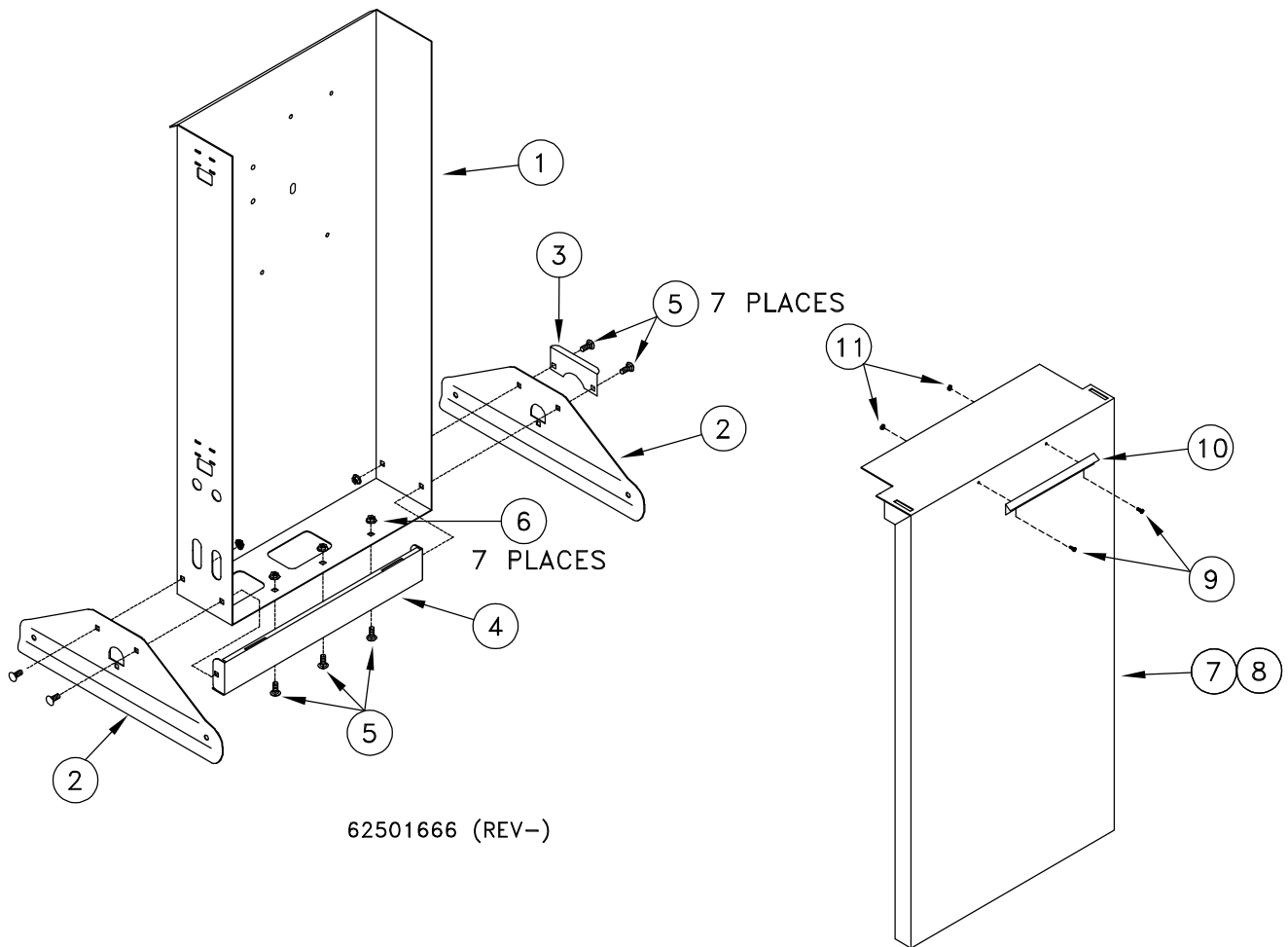
REF. NO.	PART NUMBER	DESCRIPTION	QTY.	REF. NO.	PART NUMBER	DESCRIPTION	QTY.
1	N/A	N/A	N/A	5	625-004-162	Terminal 1/4 Ring	1
2	625-002-278	Terminal, 1/4 F 16-14 AWG	4	6	62502175	GFCI In-line Power Cord	1
3	625-001-264	Spade 16-14 GA INSUL #10 Stud	13	10	950-004-097	Screw, 10-32 x 1/2	1
4	N/A	N/A	N/A	11	625-001-266	Ground Lug	1
				12	62502706	Terminal, Spade 18-22 GA	2

PUMP, EWM-4



REF. NO.	PART NUMBER	DESCRIPTION	QTY.	REF. NO.	PART NUMBER	DESCRIPTION	QTY.
1	62502600	Pump, Procon 240 GPH Lead Free	1	10	62502603	FTG, Nipple 1/2 SS	1
2	62500484	Motor, 1/2 HP	1	11	62500555	FTG, 3/8 T x 1/2 MNPT, JG	1
3	625-001-585	Pump, Coupling, V-Band Clamp 1500	1	12	62502606	FTG, 1/2 Tee SS	1
4	62500488	Pump, Shaft Coupling	1	13	62500496	FTG, 3/8 Plug In Elbow, JG	1
5	950-003-002	5/16-18 x 1/2 Carriage Bolt	4	14	62500522	FTG, 1/2 Stem x 1/2 Barb	2
6	NA	NA	NA	15	625-002-881	Hose Clamp, Stepless .76-.89	2
7	951-002-011	Nut-FL WZLK 5/16-18 SS	4	16	625-001-929	Hose, PVC Braided, 1/2 ID	1.5
8	625-001-672	FTG, 1/2 T x 1/2 MNPT	2	17	62500527	Decal, 125 PSI	1
9	62500556	FTG, 1/2 Plug In Elbow, JG	1	18	62502066	Fastener, Bolt Retainer	4

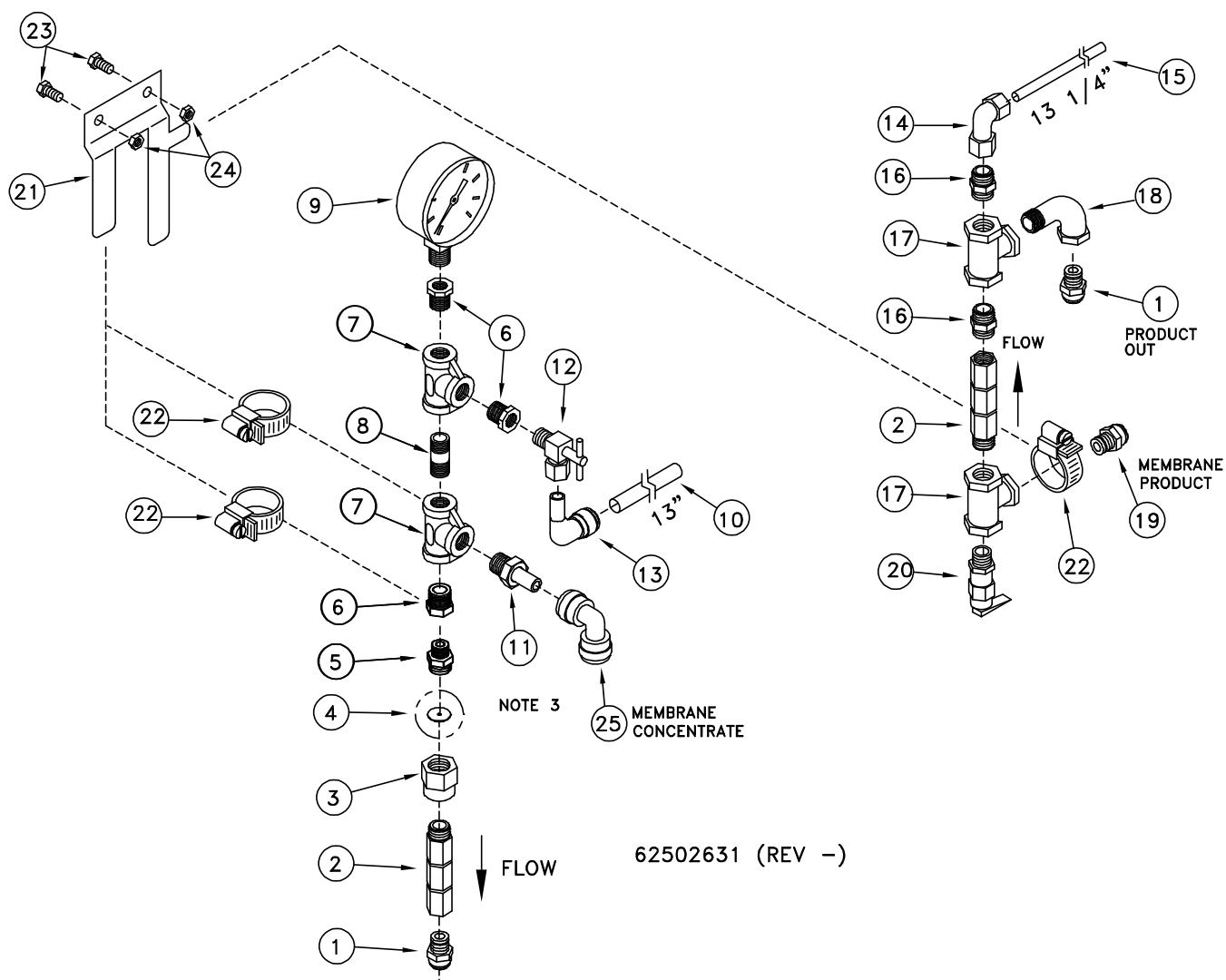
## MAIN FRAME



62501666 (REV-)

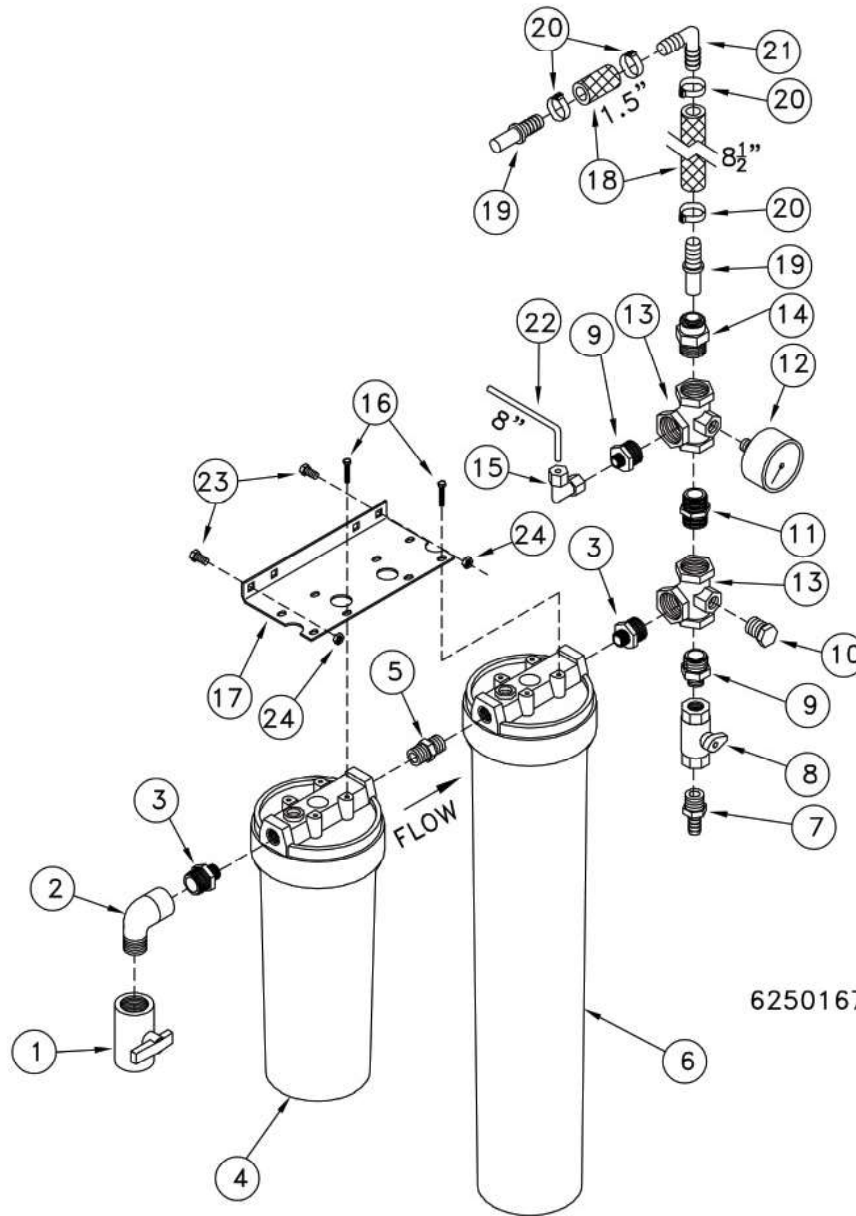
REF. NO.	PART NUMBER	DESCRIPTION	QTY.	REF. NO.	PART NUMBER	DESCRIPTION	QTY.
1	62501658	Frame, EWM	1	7	62501685	Cover Assembly, With Handle	1
2	62501661	Leg, EWM	2	8	62501670	Cover, Without Handle	1
3	62501662	Bracket, Vessel Support	1	9	950-005-031	6-32 x 1/4 Mach Screw, SS	2
4	62501671	Plate, Front EWM	1	10	62501678	Bracket, Handle EWM	1
5	950-003-077	5/16 Carriage Bolt, SS	7	11	951-001-001	Hex Nut, 6-32	2
6	951-002-011	5/16 Whiz Nut SS	7				

## PRODUCT/CONCENTRATE MANIFOLD



REF. NO.	PART NUMBER	DESCRIPTION	QTY.	REF. NO.	PART NUMBER	DESCRIPTION	QTY.
1	62500493	Ftg, 3/8T x 1/4 MNPT. JG	2	13	62500496	Ftg, 3/8 T x 3/8 Stem Elbow JG	1
2	62501657	Valve, Check Dbl SS, 1/4	2	14	625-001-690	Ftg, 1/8 T x 1/4 FNPT Elbow	1
3	62502617	Adapter, 1/4 FNPT SS	1	15	625-004-583	Tubing, Nylon 1/8 OD, Black	1.2
4	62501142	Orifice Plate #75 (4" Ro)	1	16	625-002-953	Ftg, Nylon Nipple 1/4 x 1/4 MNPT	2
4	625-004-270	Orifice Plate #55 (2.5" Ro)	1	17	625-002-956	Ftg, Nylon Tee 1/4 FNPT	2
5	62502616	Body, 1/4 SS	1	18	625-002-950	Ftg, Nylon Street Elbow 1/4	1
6	62502633	Fitting, 3/8 x 1/4 RB SS	3	19	625-004-944	Ftg, 1/4T x 1/4 MNPT, JG	1
7	62500544	Ftg, Tee, 3/8 SS	2	20	62501090	Valve, Press Relief, 100 PSI	1
8	62502634	Ftg, Nipple 3/8 x 1 1/2 SS	1	21	62501654	Brk, Manifold, CWM SS	1
9	62502622	Pressure Gauge, 0-300 PSI LF	1	22	958-025-010	5/16 Hose Clamp	3
10	625-001-901	Tubing, PE 3/8 OD	1.1	23	950-001-319	1/4-20 x 1/2 HHCS, SS	2
11	62500731	Ftg, 1/2 Stem x 3/8 NPT (4"RO)	1	24	061605	1/4-20 Lock Nut, SS	2
11	625-001-715	Ftg, 3/8 Stem x 3/8 NPT (2.5"RO)	1	25	62500524	Ftg, 1/2 T x 1/2 T Union (4"RO)	1
12	62502632	Valve, 1/4 Needle LF	1	25	625-005-999	Ftg, 3/8 T x 3/8 T Union (2.5"RO)	1

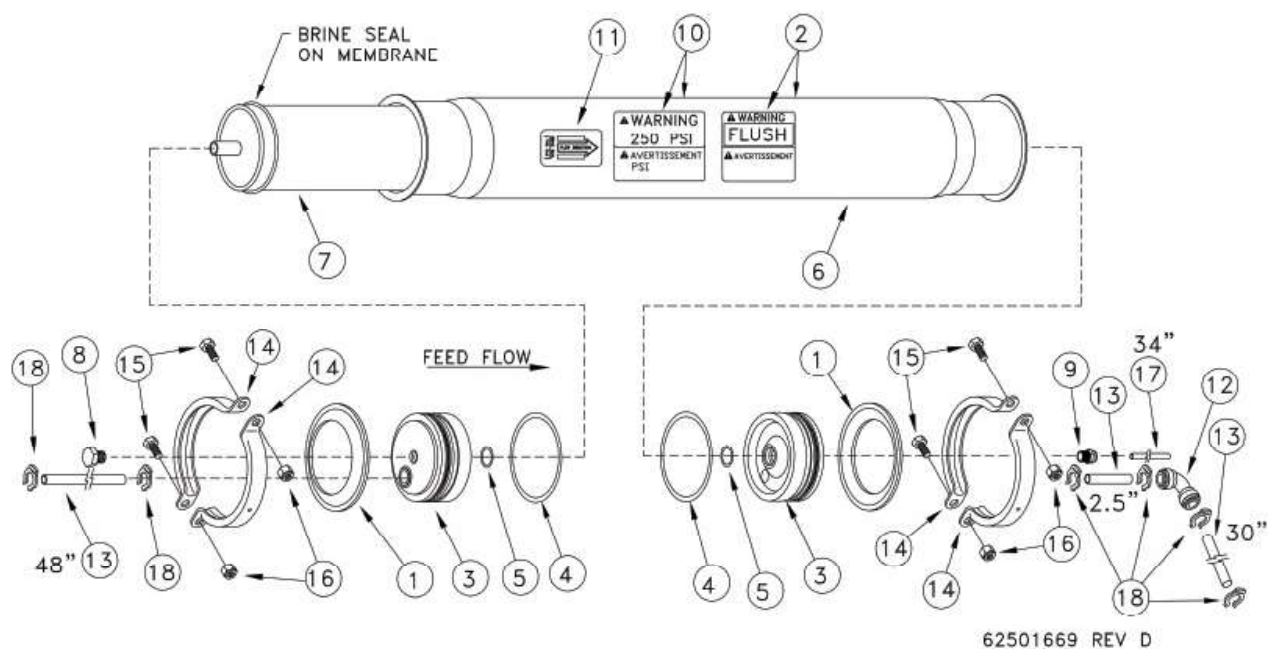
# FILTER ASSEMBLY



62501672 REV B

REF. NO.	PART NUMBER	DESCRIPTION	QTY.	REF. NO.	PART NUMBER	DESCRIPTION	QTY.
1	62501652	Ball Valve, 1/2 FNPT PVC	1	13	62501599	FTG, Nylon Gauge Tee, 1/2	1
2	62501655	FTG, Nylon Street Elbow 1/2	1	14	625-001-672	FTG, 1/2 M x 1/2 T, JG	1
3	62501020	FTG, Nylon Nipple, 1/2 x 3/8	2	15	625-001-690	FTG, 1/4 F x 1/8 Elbow Jaco	1
4	625-001-560	10" Filter Housing, Slimline	1	16	950-005-020	#10 x 3/4 Self Tapping	8
5	625-005-935	FTG, Nylon Nipple, 3/8 x 3/8	1	17	625-900-803	BRK, Filter	1
6	625-004-588	20" Filter Housing, Slimline	1	18	625-001-929	Hose, PVC 1/2 ID, Braided	0.9
7	62500412	FTG, Nylon 1/4 M x 3/8 Barb	1	19	62500522	FTG, 1/2 Stem x 1/2 Barb	2
8	625-004-206	Ball Valve, 1/4 FNPT, PVC	1	20	625-002-881	Hose Clamp, Stepless .76-.89	4
9	62501653	FTG, Nylon Nipple, 1/2 x 1/4	2	21	62500439	FTG, Nylon 1/2 x 1/2 Barb	1
10	625-003-236	FTG, 1/4 Plug PVC	1	22	625-004-583	Tubing, Nylon 1/8 O.D.	0.7
11	62501169	FTG, Nylon Nipple 1/2 x 1/2	1	23	950-001-319	1/4-20 x 1/2 Hex Head Cap Screw, SS	2
12	62502627	Pressure Gauge, 0-100 PSI LF	1	24	061605	1/4-20 Lock Nut, SS	2

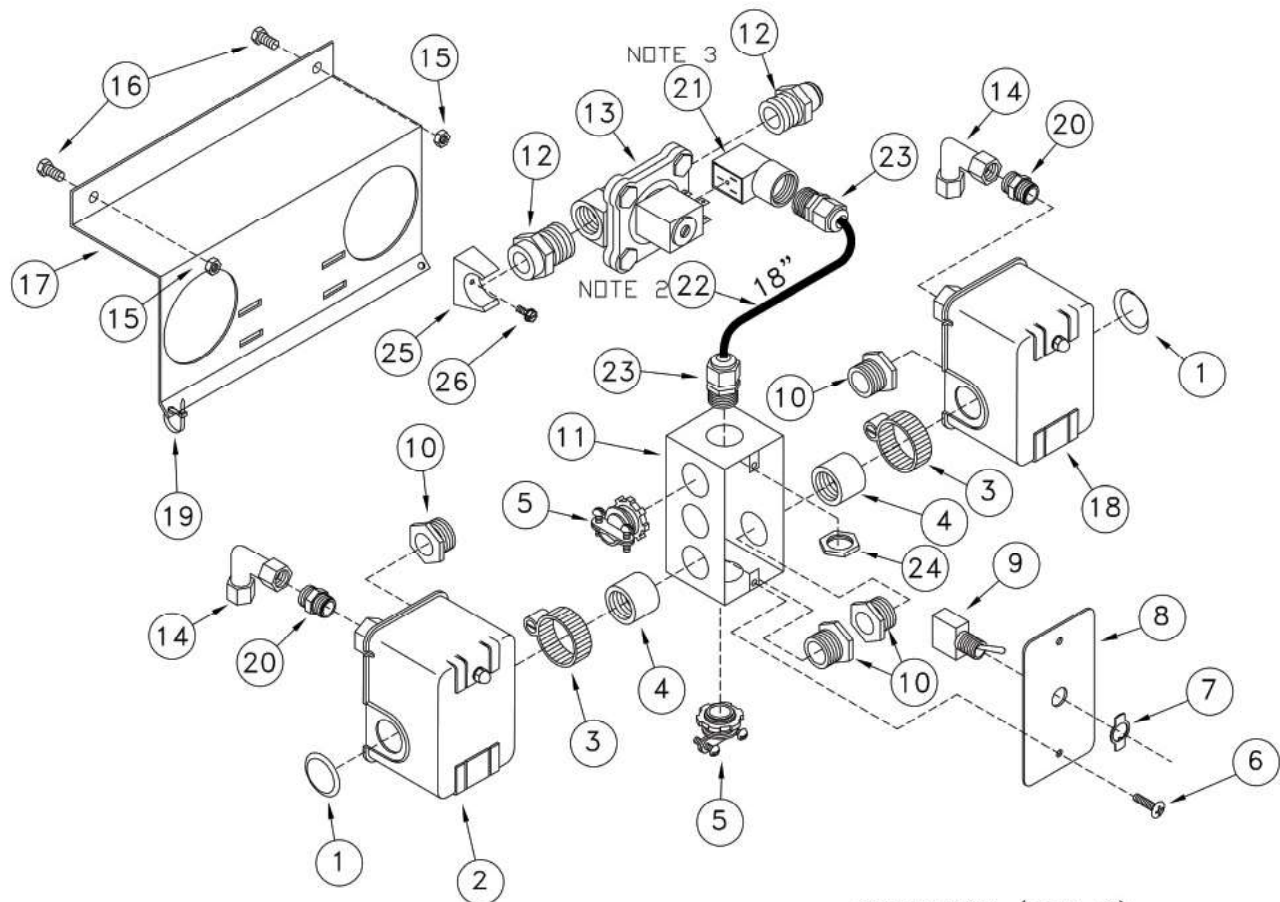
## VESSEL ASSEMBLY EWM-4



REF. NO.	PART NUMBER	DESCRIPTION	QTY.	REF. NO.	PART NUMBER	DESCRIPTION	QTY.
1	62501497	Ring, End Cap Retainer	2	10	62502956	Decal, Vessel Warning	2
2	62502958	Decal, SBS Flush	2	11	62501209	Decal, Brine Seal Flow Direct	1
3	62501645	Assy, End Cap 4 W/John Guest	2	12	62500524	FTG. 1/2", Union 90	1
4	625-001-506	O-Ring 342 Buna	2	13	62501570	Tubing, 1/2 OD x 3/8 ID BLK Poly.	6.8
5	625-001-502	O-Ring 116 Buna	2	14	62501496	Clamp, Formed Flange	4
6	62501493	Vessel, SS 4"(Includes (1) #10)	1	15	031-09103	Hex Head Cap Screw 3/8-16 x 3/4 SS	4
7	62501113	Membrane, Filmtec XLE 4040	1	16	951-003-013	Lock Nut 3/8-16 SS	4
8	625-003-230	FTG., PVC SCH 80 Plug 3/8	1	17	625-001-903	Tubing, PE 1/4 OD	2.9
9	625-005-940	FTG, CONN 3/8 MPT x 1/4 T	1	18	62501721	Clip 1/2 Lock	6



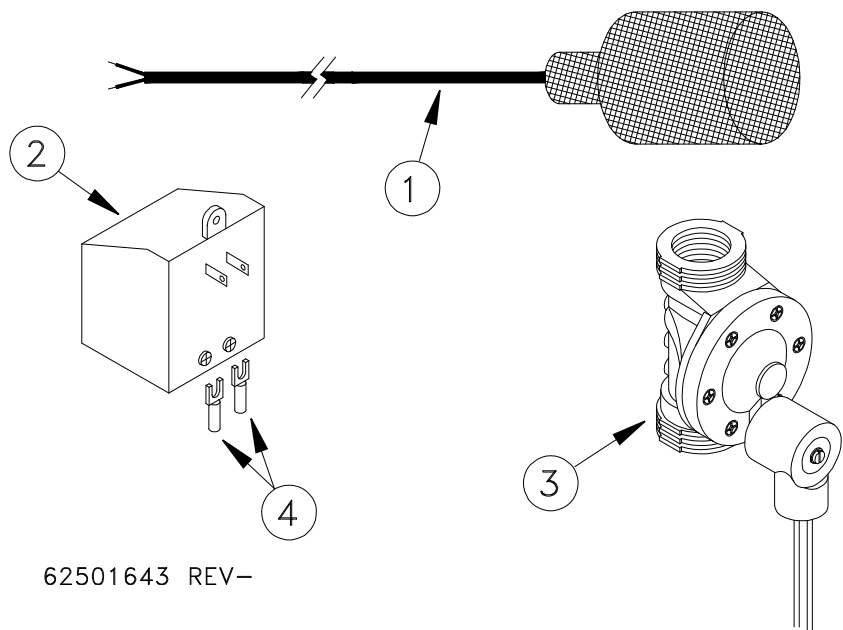
## PRESSURE SWITCH ASSEMBLY



62501667 (REV C)

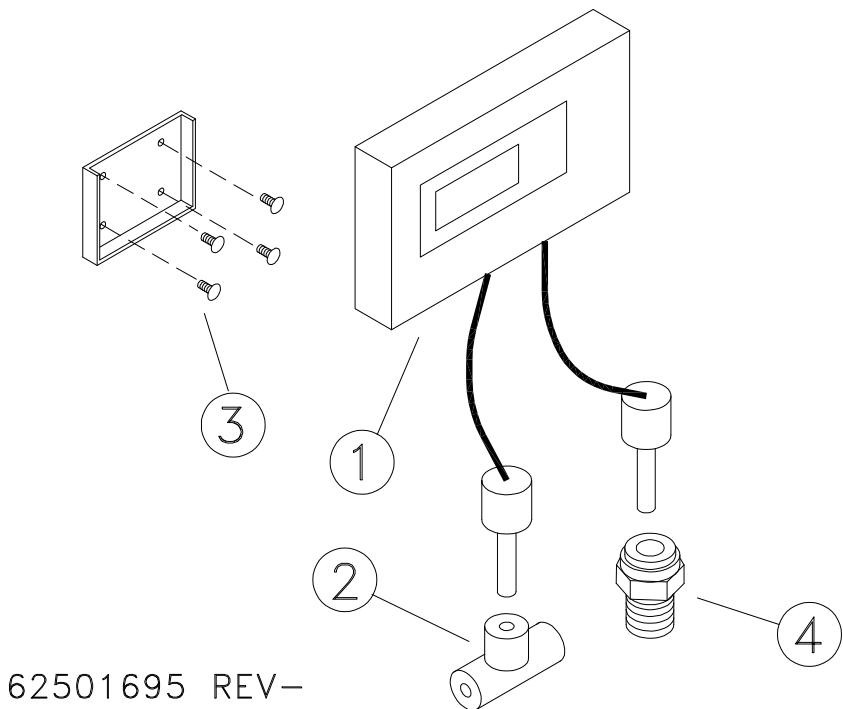
REF. NO.	PART NUMBER	DESCRIPTION	QTY.	REF. NO.	PART NUMBER	DESCRIPTION	QTY.
1	62501577	Plug, 7/8 Plastic CA Plug	2	14	625-001-690	FTG, 1/8T x 1/4 FNPT Elbow	2
2	62501594	Pressure Switch, 40-60 PSI	1	15	061605	Hex Nut, 1/4-20, SS	2
3	601638	Hose Clamp 1 1/2	2	16	950-001-319	Hex Bolt 1/4-20 x 1/2 SS	2
4	62501673	FTG, Conduit Half Coupling	3	17	62501660	Bracket, Press Switch, CWM SS	1
5	625-001-314	FTG, Elec Romex Conn 3/8	2	18	62501593	Press Switch, 5-10 PSI	1
6	031-17561	Mach Screw #6 x 3/4 Pan Head	2	19	625-001-469	Wire Tie	1
7	62501604	Switch Plate On/Off	1	20	625-002-953	FTG, Nylon 1/4 Nipple	2
8	62501600	Plate, Switch Cover	1	21	62502689	Connector, DIN Solenoid	1
9	62501603	Switch, DPST, Toggle 20 Amp	1	22	62502688	Wire, 18/3 Type SVT	1.5
10	62501589	FTG, Conduit Bushed Nipple	4	23	62501453	Strain Relief, 1/2 MNPT	2
11	62501576	Elec Box, Outlet Raco 670SM	1	24	62501454	Locknut, Nylon 1/2 NPT	1
12	625-001-672	FTG, 1/2T x 1/2 MNPT	2	25	62502840	Clamp, Plastic Snap 3/4	1
13	62502736	Valve, 1/2 Solenoid, 120 VAC	1	26	392-010-028	Self Tap 8-32 x 1/2	1

REMOTE PRODUCT SHUTOFF VALVE (OPTIONAL)



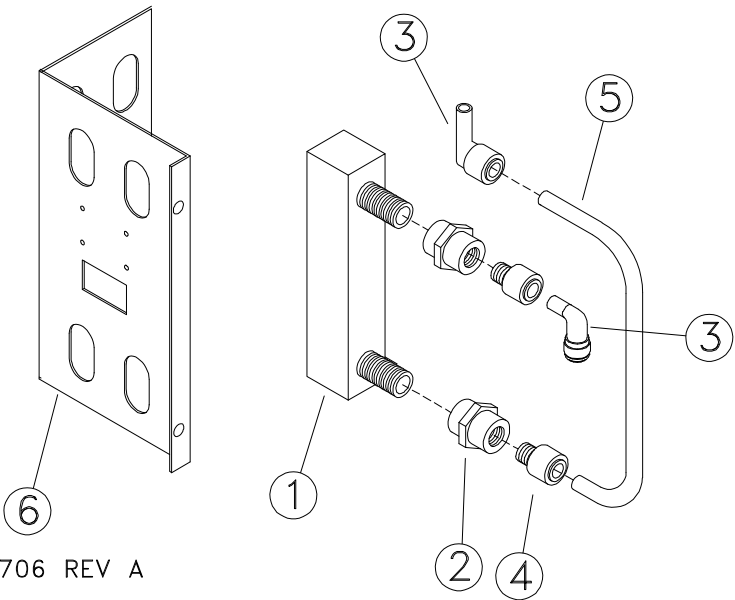
REF. NO.	PART NUMBER	DESCRIPTION	QTY.	REF. NO.	PART NUMBER	DESCRIPTION	QTY.
-	62501640	Kit, Remote Product Shutoff		3	62501163	Solenoid Valve, 24 VAC	1
1	62501633	Float Switch	1	4	625-001-264	Spade Terminal	2
2	62501636	Transformer, 120/24 VAC	1				

TDS METER (OPTIONAL)



REF. NO.	PART NUMBER	DESCRIPTION	QTY.	REF. NO.	PART NUMBER	DESCRIPTION	QTY.
1	62501635	TDS METER, DUAL PROBE	1	3	061025	#6-32 X 3/8 Self Tap Screw	4
2	625-004-942	UNION TEE, 1/4	2	4	62501709	FTG, Drilled 1/4T x 1/4M	4

FLOWMETER (OPTION)



REF. NO.	PART NUMBER	DESCRIPTION	QTY.	REF. NO.	PART NUMBER	DESCRIPTION	QTY.
1	62501676	Flowmeter, .2-2 gpm	2	4	625-005-949	FTG, 3/8T x 3/8 M	4
2	62501731	FTG, Nylon Reducer Coupling 1/2 x 3/8	4	5	625-001-901	Tubing, 3/8 OD PE	2.5
3	62500496	FTG, Plug in Elbow, 3/8	1	6	62501659	Mounting Bracket (Optional)	1