

## SERVICE PARTS

---

It is the policy of Coster Engineering to constantly improve its products whenever it is practical to do so.

Coster Engineering must therefore reserve the right to redesign or change its equipment or component parts thereof without incurring the obligation to install or furnish such changes on equipment previously delivered.

### INSTRUCTIONS FOR ORDERING PARTS

1. The reference numbers in the illustrations correspond to the numbers shown in the "Reference Number" column in the parts listing. The quantity in the "number required" column is the number of parts used in the accompanying illustration. The term "A/R" for number required indicates "as required" where the quantity may vary. Order all parts by their part number and description.
2. Always mention the identification number of the code and serial numbers found on the name plate of the unit on which the part is to be used. Much delay and confusion can be avoided when correct numbers are specified on parts order and correspondence.
3. Owner, order all parts through your local dealer.
4. Dealers must indicate how to ship; whether by truck, rail freight, express, or parcel post.
5. Collect phone calls are not accepted.
6. Address all orders for parts as follows:

**COSTER ENGINEERING**  
**217 E PLUM STREET**  
**MANKATO, MN 56001**  
**PH (844) 975-1100**  
**FAX (507) 549-1101**  
**costerwater.com**

### INSTRUCTIONS FOR RETURNING PARTS FOR ADJUSTMENT

1. To assure prompt handling of claims, your dealers should follow standard claim and forward claim procedures within thirty (30) days, of any part failure or malfunction believed to be a warranty claim.
2. No returned part will be accepted unless they are transportation prepaid and accompanied by the packing list, copy of the returned goods authorization form, or the packing list copy of the warranty claim form.
3. Parts returned should have a tag attached with sender's name and address clearly printed.

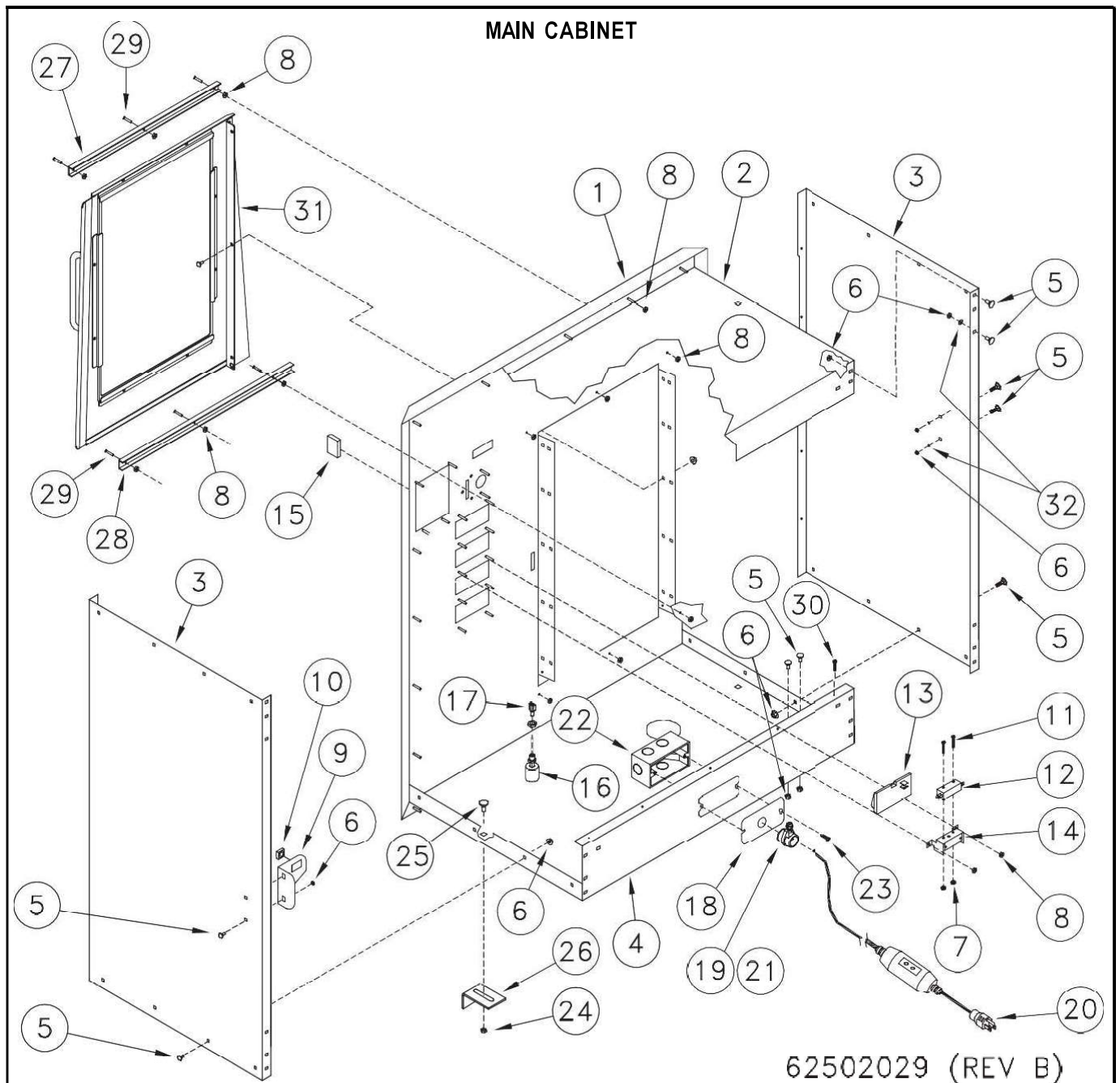
### DISCLAIMER

This supplement contains additional information that is specific to units. It is used in conjunction with the basic machine operator's manual which includes safety and operational information.

Retain all manuals for future reference. Read all and understand all manuals in their entirety before operation or service.

The information contained in this manual is subject to change without notice.

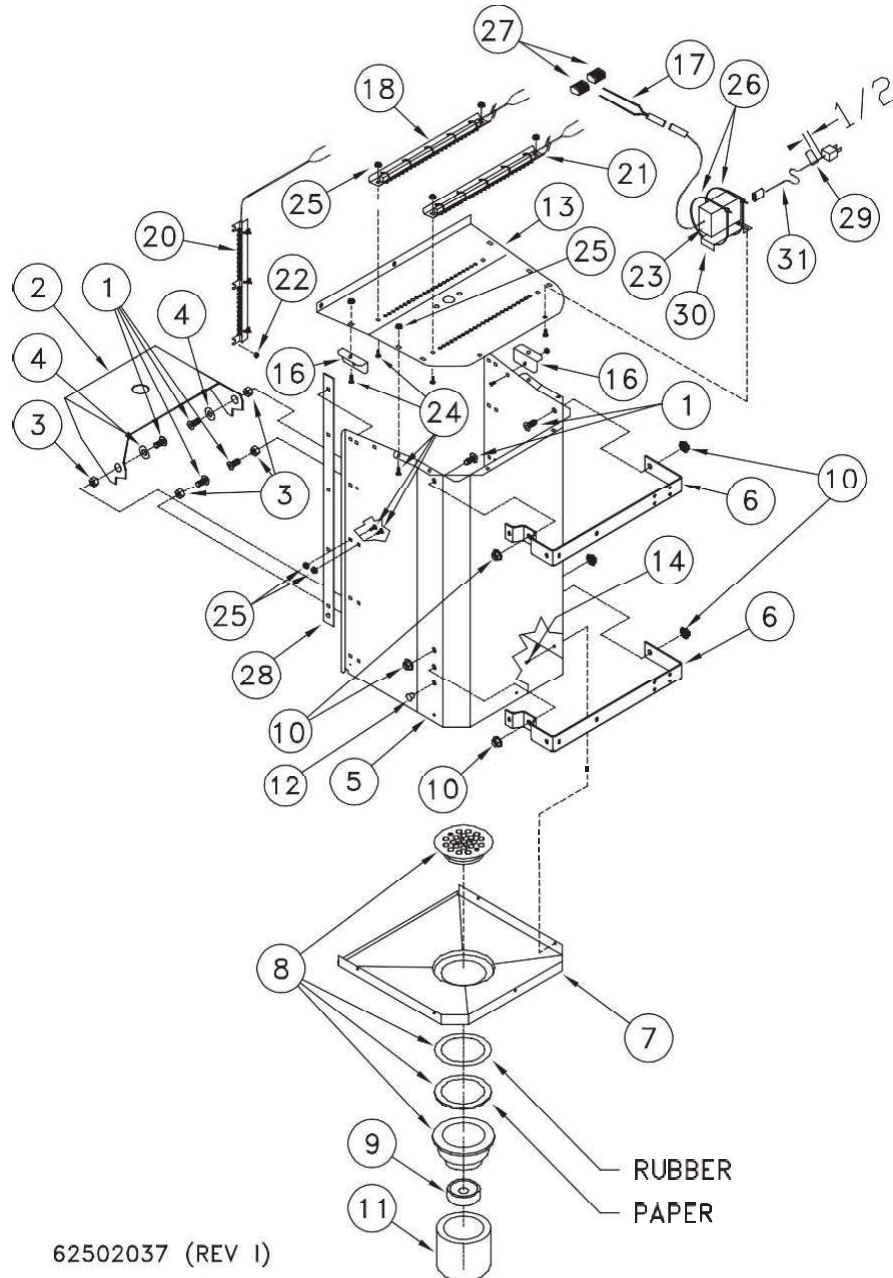
Coster Engineering shall not be liable for technical or editorial omissions made herein; nor for incidental or consequential damages resulting from the furnishing, performance, or use of this material.



REF. NO.	PART NUMBER	DESCRIPTION	QTY.	REF. NO.	PART NUMBER	DESCRIPTION	QTY.
1	62502030	Cab, Face 200 Single	1	17	62500691	Sold. Term 1/4M 22-18 Full Ins	2
2	62502032	Top, Single 200	1	18	62502035	Cover, Electrical Cord	1
3	62502031	Panel Side	2	19	62500498	Strain Relief	1
4	62502033	Panel, Bottom Single 200	1	20	62502175	GFCI Corded Plug, 15A 110V Inline	1
5	950-003-071	Carriage Bolt, #10-24-1/2 SS	34	21	625-004-092	Wire Nut Yellow (Not Shown)	3
6	951-002-012	Hex Nut #10-24 Whiz Lock	34	22	62502036	Elec Box 2 1/8 x 4 x 1 7/8	1
7	951-001-001	Nut-Hex #6-32	8	23	950-005-014	Self Tapping Screw #6-32 x 1	2
8	951-001-012	Nut - Hex #8-32	42	24	951-002-002	Flanged Head Whiz Lock Nut 5/16-18	4
9	62502034	Bracket, Latch, Rear Door	1	25	950-003-002	Carriage Bolt 5/16-18 x 1/2 G5 SS	4
10	625-001-075	Vending Part, Nut 1/2-13	1	26	625-901-060	Bracket Cab Mount	4
11	700-10904	Machine Screw #6-32 x 1 Slotted Pan Head	8	27	62502049	Channel, Top	1
12*	62500615	Switch, SPST, Cherry Micro	4	28	62502050	Channel, Bottom	1
13*	62500617	Switch, Rect. Push Button	4	29	625-005-182	Stud, #8-32 x 3/4 SS	6
14	62500618	Bracket, Rect. Button Mount	5	30	392-010-028	Self Tapping Screw 8-18 x 1/2	1
15	62500753	Fastener, Magnetic Catch, Snap In	1	31	62502041	Door Assembly	1
16	625-001-325	Level Switch, N/C Float & Stem	1	32	952-004-068	Washer, #10 SS .2 x .44 x .05	6

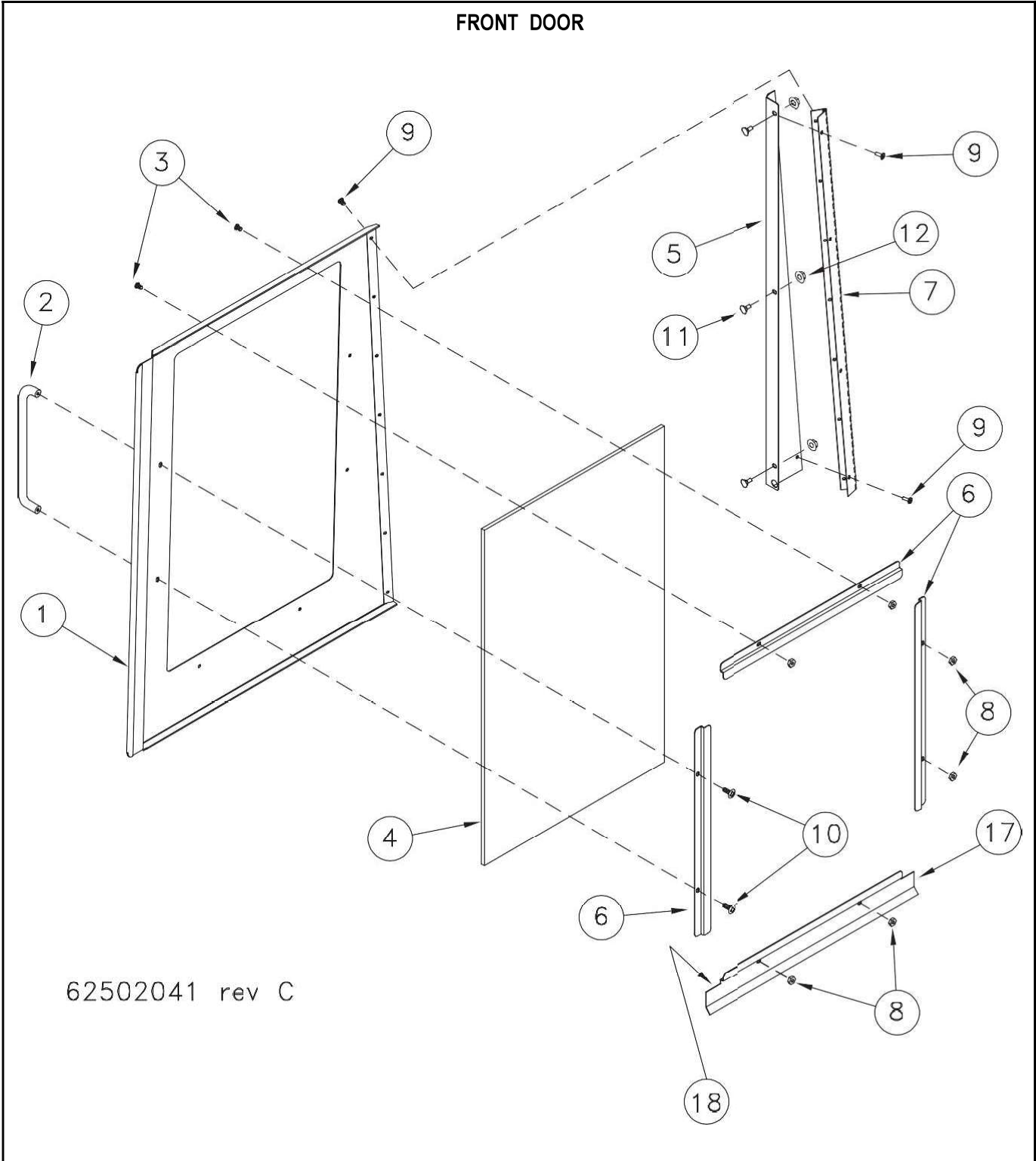
\* Recommended Spare Parts \*\* Additional Recommended Spare Parts

## DISPENSER HOUSING



REF. NO.	PART NUMBER	DESCRIPTION	QTY.	REF. NO.	PART NUMBER	DESCRIPTION	QTY.
1	950-001-063	Socket Button Head Screw 3/8-16 x 3/4 SS	6	17	62502151	Harness, LED Power Supply	1
2	625-900-303	Shelf, Dispenser	1	18	62502152	Sec, LED Disp Light, White	1
3	061910	Hex Nut 3/8-16 SS	4	19	625-001-469	Tywrap, plastic	6
4	061916	3/8 Flat Washer SS	2	20	62502153	Sec, LED Selection Button Lights	1
5	62502038	Housing Flange Dispenser	1	21	62502154	Sec, LED Disp Light, Blue	1
6	625-900-300	Bracket, UV Light	2	22	951-001-012	Hex Nut #8-32	3
7	62500743	Drain Pan, Flare Side	1	23	62502950	Power Supply, LED Lights	1
8	625-001-741	Drain PVC Shower Stall	1	24	950-003-071	Carriage Bolt, #10-24-1/2 SS	29
9	62500770	FTG, RB 2" Slip x 1" Th	1	25	951-002-012	Hex Nut #10-24 Whiz Lock	29
10	951-002-003	Whiz Lock Nut 3/8-16	6	26	367-001-011	Cable Tie, 14"	2
11	625-901-062	Seal Drain	1	27	62502986	Connector, Lever Nut	2
12	62500922	Plug, 3/8 Locking Hole, Black Plastic	2	28	62502752	Bracket, Splash Guard	1
13	62502039	Top Dispenser Flange	1	29	62502931	Label, LED Cord	1
14	954-002-010	Rivet-Pop 1/8 x 1/8 SS	5	30	62502951	Bracket, Power Supply	1
15	N/A	N/A	N/A	31	62502949	Power Cord 6 Ft.	1
16	62502062	Bracket, Housing	2				

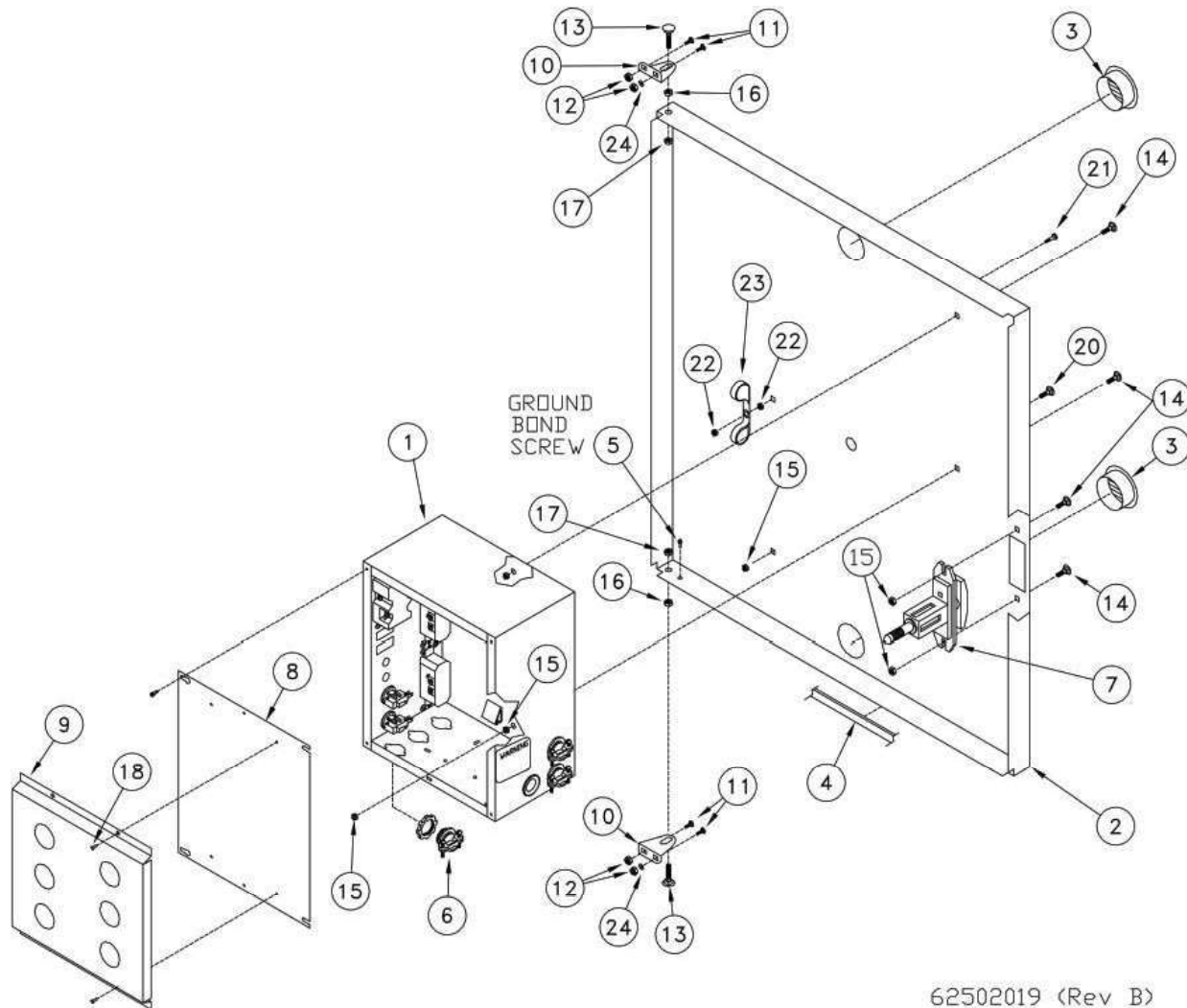
\* Recommended Spare Parts \*\* Additional Recommended Spare Parts



REF. NO.	PART NUMBER	DESCRIPTION	QTY.	REF. NO.	PART NUMBER	DESCRIPTION	QTY.
1	62502042	Door Front LH	1	10	950-011-056	Machine Screw #8-32 x 1/2 Round Head	2
2	62502043	Handle, Round Door	1	11	950-003-071	Carriage Bolt 10-24 SS	3
3	950-011-062	Tamper Resistant Screw #6-32 x 1/4	6	12	951-002-012	Hex Nut 10-24 Whiz Lock	3
4	62501928	Panel, Clear Acrylic Door	1	13	N/A	N/A	N/A
5	62502045	Bracket, Hinge LH	1	14	N/A	N/A	N/A
6	62502046	Bracket, Retainer	3	15	N/A	N/A	N/A
7	62502047	Hinge, Door	1	16	N/A	N/A	N/A
8	951-003-017	Lock Nut #6-32	6	17	62502751	Bracket, Splash Guard	1
9	954-002-010	Rivet-Pop 1/8 x 1/8 Stain OEDH	9	18	-----	Silicone Sealant	N/A

\* Recommended Spare Parts    \*\* Additional Recommended Spare Parts

## REAR DOOR

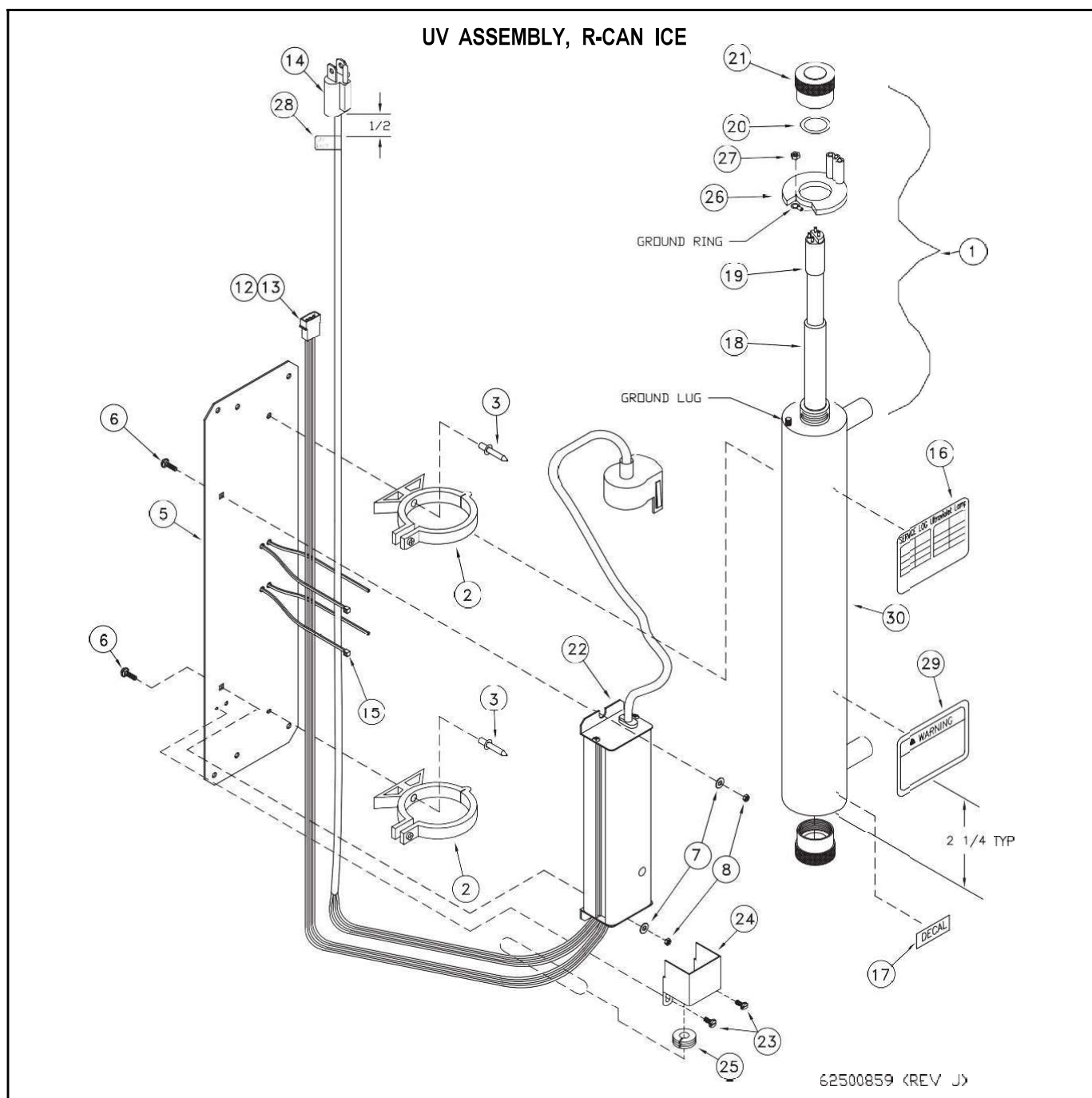


62502019 (Rev B)

REF. NO.	PART NUMBER	DESCRIPTION	QTY.	REF. NO.	PART NUMBER	DESCRIPTION	QTY.
1	62502514	Assembly, CLICK Electrical Box	1	13	950-003-039	Carriage Bolt, 5/16-18 x 1 Gr. 5 Short	2
2	62502020	Door Rear Cabinet	1	14	950-003-065	Carriage Bolt, 1/4-20 x 5/8 Gr. 5	4
3	625-001-965	Vent, 2" Dia Aluminum Louvered	2	15	951-002-001	Flanged Whiz Lock Nut 1/4-20	5
4	62501337	Trim, Edge Guard 1/8"	9'	16	951-002-002	Flanged Whiz Lock Nut 5-16-18	2
5	392-010-028	Self Tapping Screw 8-18 x 1/2	1	17	951-003-001	Nut-Nylon Insert 5/16-18	2
6	625-001-312	HeadRomex Connector, 3/4	1	18	954-002-010	Rivet-Pop 1/8 x 1/8 Stainless	4
7	625-005-166	T-Handle Lock Flush Mount	1	19	N/A	N/A	N/A
8	625-900-333	Cover, Electrical Box	1	20	950-004-002	Bolt, 1/4-20 x 3/8	1
9	625-900-774	Bracket, Literature	1	21	392-010-020	#8-32 x 3/4 Machine Screw	1
10	62502021	Bracket, Hinge	2	22	951-001-012	#8-32 Hex Nut	2
11	950-003-071	Carriage Bolt, #10-24-1/2 SS	4	23	62501394	Cable Clamp 3/4" Nylon	2
12	951-001-002	Hex Nut #10-24 SS	4	24	952-004-068	Washer, #10 SS .2 x .44 x .05	2

\* Recommended Spare Parts \*\* Additional Recommended Spare Parts

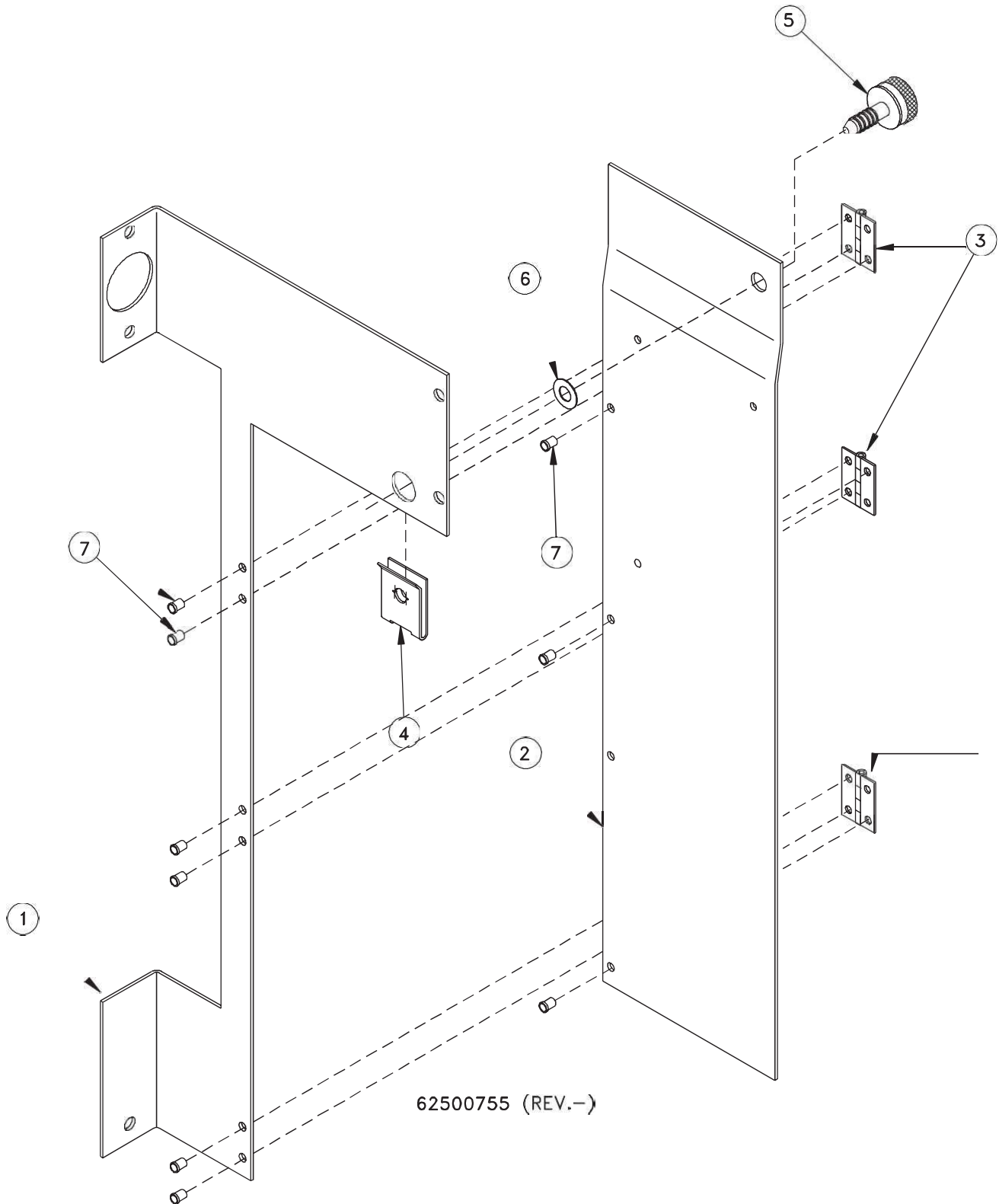




REF. NO.	PART NUMBER	DESCRIPTION	QTY.	REF. NO.	PART NUMBER	DESCRIPTION	QTY.
1	62502822	Light, 5 GPM Uv R-Can (Includes 16 & 22)	1	16	62502938	Decal, Service Log (Included With 1)	1
2	-----	Clip Included W/Item 1	2	17	62500940	Decal, Bulb Replacement	1
3	954-002-003	Rivet-Pop 3/1 x 3/8 Stain OEDH	2	18*	62500855	Sleeve, Quartz UV QS-463	1
4	N/A	N/A	N/A	19*	62500854	Light, UV S463RL R-Can	1
5	625-901-072	Bracket 5 GPM Trojan MNT	1	20	62500853	O-Ring, 5 GPM UV OR-212	1
6	950-003-071	Bolt CGE #10-24 x 1/2 SS	2	21	62500857	Nut, UV AL Gland RN-001	2
7	952-004-062	Washer, 1/4 SS	2	22	62500856	Ballast Electronic BA-ICE-VI	1
8	951-001-002	Nut-Hex #10-24 SS	2	23	061034	Self Tapping Screw #6-32 x 3/16	2
9	625-004-026	Wire, Blue #18 (16/30) UI-1007	2	24	62501719	Electrical Cover	1
10	625-004-028	Wire, Black #18 (16/30) UI-1007	2	25	62501720	Grommet	1
11	625-004-072	Wire, Red #18 (16/30) UI-1007	2	26	-----	Ground Nut (Included With Item 1)	1
12	62500641	Pin, 24-18 AWG Mate-N-Lok	3	27	-----	Connector, (Included With Item 1)	1
13	62500682	Housing, 3 Pin Mate-N-Lok	1	28	62502930	Label, UV Cord	1
14	62500690	Plug, W/18-3 SJT 110V 59" Cord	1	29	62502939	Decal, Warning (Included With Item 1)	1
15	625-001-469	Tywrap, plastic	2	30	62503053	Canister (Includes Items 16 & 29)	1

\* Recommended Spare Parts \*\* Additional Recommended Spare Parts

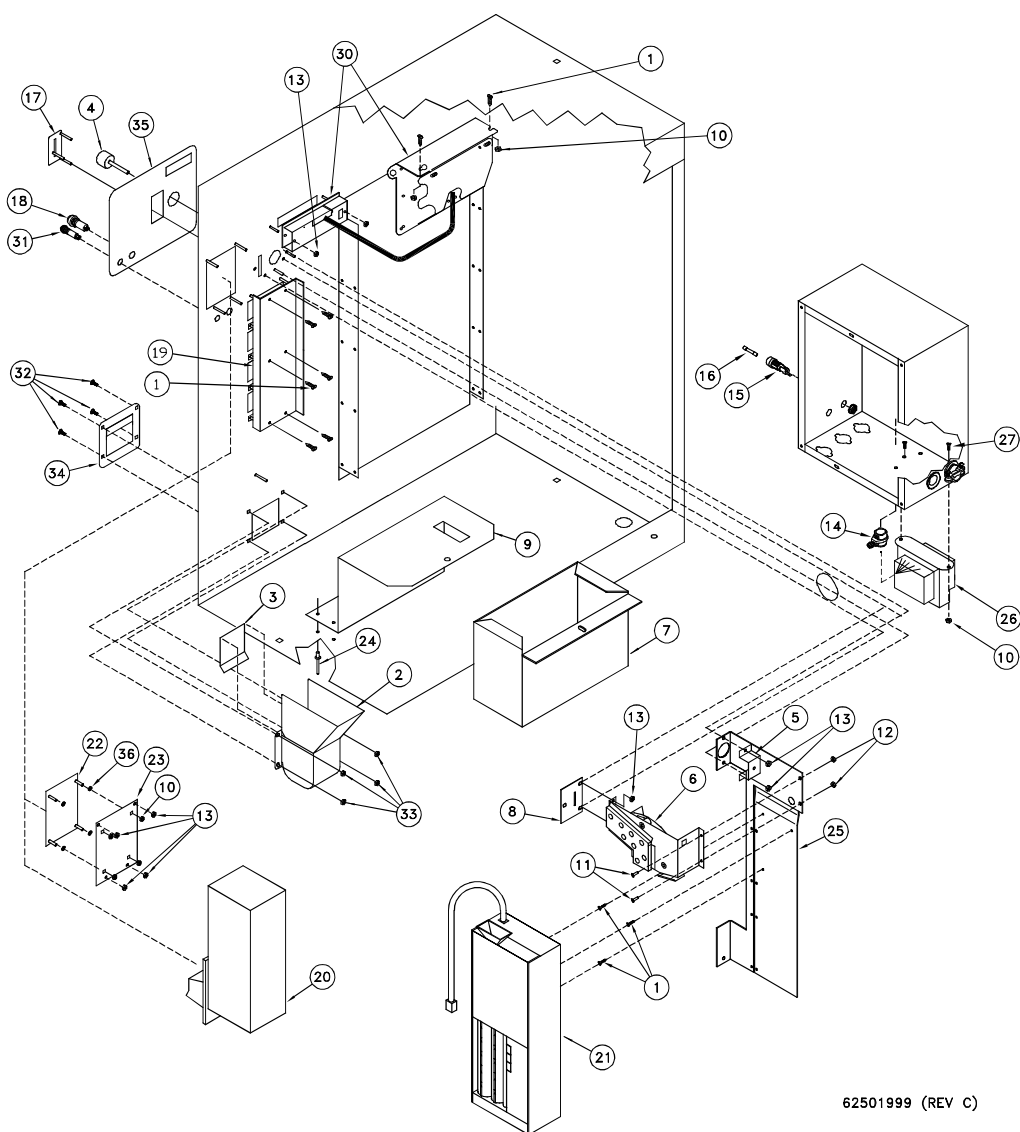
## COIN MECHANISM BRACKET ASSEMBLY



REF. NO.	PART NUMBER	DESCRIPTION	QTY.	REF. NO.	PART NUMBER	DESCRIPTION	QTY.
1	62500747	Bracket Coin Changer Hinge MT	1	5	106-002-028	Filter Cover Screw 17-13-204-11	1
2	625-901-057	Bracket Coin Changer MT	1	6	106-001-007	Filter Cover Washer 17-10014-12	1
3	62500763	Hinge, 1 x 3/4 x .035 Butt	3	7	954-002-010	Rivet-Pop 1/8 x 1/8 Stain OEDH	9
4	106-001-008	Clip On Receptacle 17-10017-11	1				

\* Recommended Spare Parts \*\* Additional Recommended Spare Parts

## COIN MECHANISM SECTION



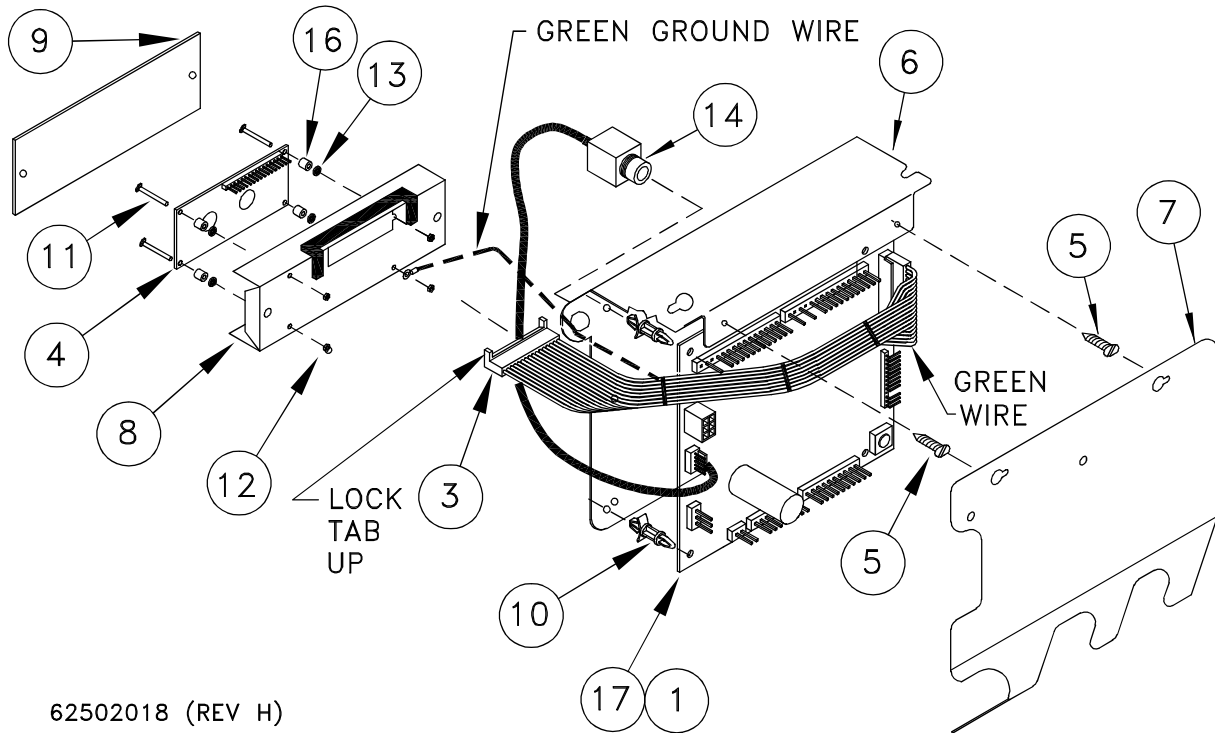
62501999 (REV C)

REF. NO.	PART NUMBER	DESCRIPTION	QTY.	REF. NO.	PART NUMBER	DESCRIPTION	QTY.
1	392-010-028	Self Tapping Screw #8-18 x 1/2 Shw Head	11	19	62500652	Guard, Coin Mech.	1
2	62501484	Coin Return, SS (Includes 3)	1	20	62501893	MDB Bill Validator List	0
3	625-004-766	Coin Return Door SS	1	21	62501892	MDB Coin Changer	0
4	625-004-768	Button, Coin Return	1	22	62502374	ListCover, \$ Bill Hole	1
5	625-004-769	Bracket, Coin Return Button	1	23	62501727	Plate, Bill Cover Backer	1
6	62501280	Bracket Assembly, Coin Return	1	24	109953	3/16 SS Rivet	4
7	625-900-777	Large Cash Box	1	25	62500755	Bracket, Hinged Coin Mech Mt 4-Sel	1
8	625-901-091	Coin Slot Guard	1	26	62503149	Transformer, Control 75Va	1
9	62501326	Bracket, Cash Box	1	27	950-004-061	#8-32 x 1/2 Pan Truss Head, SS	2
10	951-003-011	Nut Hex Lock 8-32	8	28	62500691	Terminal, 1/4M 22-18 (Not Shown)	1
11	950-004-024	Mach. Screw, #6 x 3/8	2	29	62500631	Terminal, 3/16 (Not Shown) See	1
12	951-001-001	Nut, Hex, #6-32	2	30	-----	Page 40	0
13	951-001-012	Nut, Hex, #8-32	11	31	62502538	Out of Service Light, Red 1/2 Dia	1
14	62500498	Strain Relief	1	32	950-003-081	Carriage Bolt, #10-24-3/4 SS	4
15	39207034	Fuse Holder	1	33	951-002-012	Hex Nut #10-24 Whiz Lock	4
16	62500634	Fuse 5 A 3 Ag	1	34	62502076	Plate, Coin Guard	1
17	62500647	Coin Slot, SS	1	35	62502075	Decal, Instr, Vend, Elec Coin	1
18	62502009	Switch SPST, Red Push Button	1	36	62502437	O-Ring, Rubber	4

\* Recommended Spare Parts    \*\* Additional Recommended Spare Parts



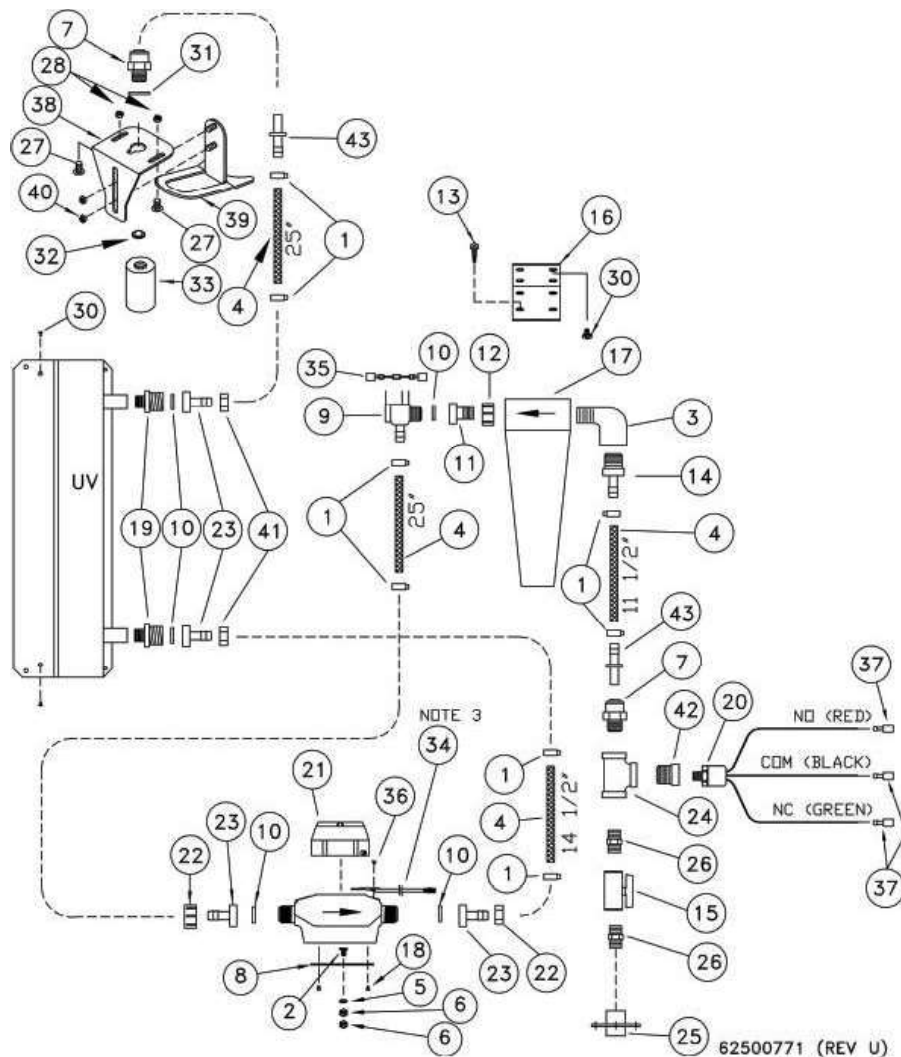
## VENDING MACHINE CONTROLLER (VMC)



REF. NO.	PART NUMBER	DESCRIPTION	QTY.	REF. NO.	PART NUMBER	DESCRIPTION	QTY.
1	62502004	VMC Board, Cable & Display	1	10	39200014	Standoff, Circuit Board 1/4	4
2	N/A	N/A	N/A	11	950-004-116	Machine Screw #2-56 x 5/8 SS	4
3	62502006	Connector Cord, Only	1	12	951-001-033	Nut, Hex #2-56 SS	4
4	62502672	Display Only	1	13	62502203	Retainer #2 Nylon	4
5	392-010-028	Self Tapping Screw #8-18 x 1/2 Shw Head	2	14	62502120	Harness DEX Cable (Optional)	1
6	62502002	Bracket, 200W VMC	1	15	62502131	Harness MDB 12" Extender	1
7	62502003	Bracket, Cover 200W VMC	1	16	62502200	Spacer, Nylon 3/16 Long	4
8	62502204	Bracket, Display W/Weatherstrip	1	17*	62502678	VMC Board & Cable only	1
9	62502199	Window, 1/16 Clear U.V. Filter	1			(Display not included)	

\*\* Additional Recommended Spare Parts

## PLUMBING SECTION



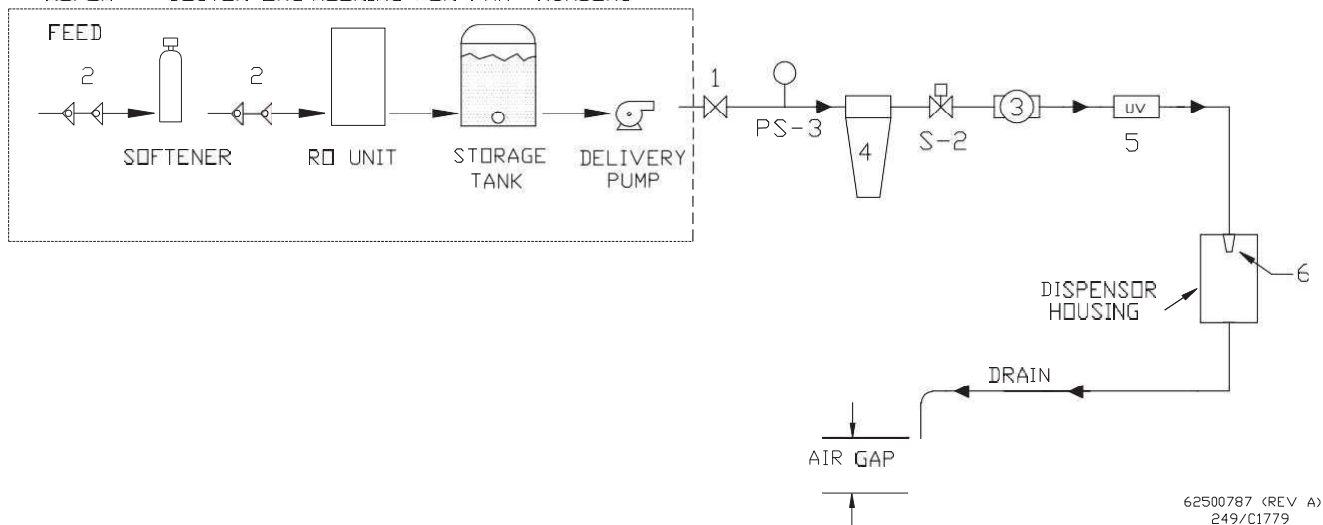
REF. NO.	PART NUMBER	DESCRIPTION	QTY.	REF. NO.	PART NUMBER	DESCRIPTION	QTY.
1	625-002-881	Hose Clamp, .76-.89 SS	8	23	62500423	Barb-Swivel, 1/2H	4
2	950-003-065	Carriage Bolt 1/4-20 x 5/8 Gr. 5	1	24	62502606	Fitting, Stainless Steel Tee, 1/2	1
3	62501655	Fitting, Nylon 1/2 Street 90	1	25	62502608	Weldment, SS Bulkhead	1
4	625-001-929	Hose, 1/2 Dia Braided	6.5	26	62501169	Fitting, Nylon Nipple 1/2	2
5	033-12007	Flat Washer, SAE 5/16 PI	1	27	950-003-071	Carriage Bolt, 10-24 SS	2
6	060102	JAM NUT 1/4	1	28	951-002-012	Nut, Hex 10-24 Whiz Lock	2
7	625-001-672	Fitting, 1/2 x 1/2 JG	1	29	N/A	N/A	N/A
8	62500657	Bracket, Water Meter	1	30	392-010-028	Self Tapping Screw 8-18 x 1/2 Hex Head	6
9	62501392	Solenoid Valve, Plastic, 5 GPM	1	31	39212011	Seal Ring 1/2	1
10	625-004-467	Washer, GHT White. Rubber	5	32*	62501815	Screen, 1/2 Nozzle	1
11	62501814	Fitting, 1/2m x Swivel	1	33	62501818	Nozzle Assembly, W/Screen 1/2"	1
12	62501459	Nylon Nut Assembly W/Hose Clamp	1	34	62500661	Assembly, Water Meter Sensor	1
13	950-005-020	MS, #10-16 x 3/4 Hex Self Tap	4	35	62502132	TVS Surge Suppressor	1
14	62500417	Fitting, Nylon 1/2 x 1/2	2	36	392-010-019	Self Tapping Screw #6-20 x 3/8 Phillips Pan Head	2
15	62501652	Valve, 2 Way Ball PVC, 1/2	1	37	62500691	Terminal 1/4 Push On	3
16	62501823	Bracket, Filter Housing, 1/2	1	38	62501122	Bracket, Upper Guide	1
17	62501813	Filter Housing, 1/2 Slimline	1	39	62501121	Bracket, Lower Guide	1
18	950-005-027	Hex Head Self Tapping Screw 8-18 x 3/8 AB	4	40	061605	Nut, 1/4-20 SS Nylon Lock	2
19	62501793	Fitting, Nylon 3/8m x 3/4mgh	2	41	62500443	Nylon Nut, GHT	2
20	62502593	Press Switch 10-100 PSI SPDT	1	42	62502716	Fitting, Stainless Steel RB 1/2 x 1/4	1
21	62500658	Water Meter, Machined (Gallon)	1	43	62500522	Fitting, 1/2 Stem x 1/2 Hose Barb	1
22	625-002-955	Fitting, Swivel Nut Blk 3/4 Fps	2				

\* Recommended Spare Parts \*\* Additional Recommended Spare Parts

## FLOW DIAGRAM

FLOW DIAGRAM  
CTV-200W 4-SELECT

OPTIONAL, EXTERNAL PRETREATMENT/DELIVERY EQUI  
REFER TO COSTER ENGINEERING FOR PART NUMBERS

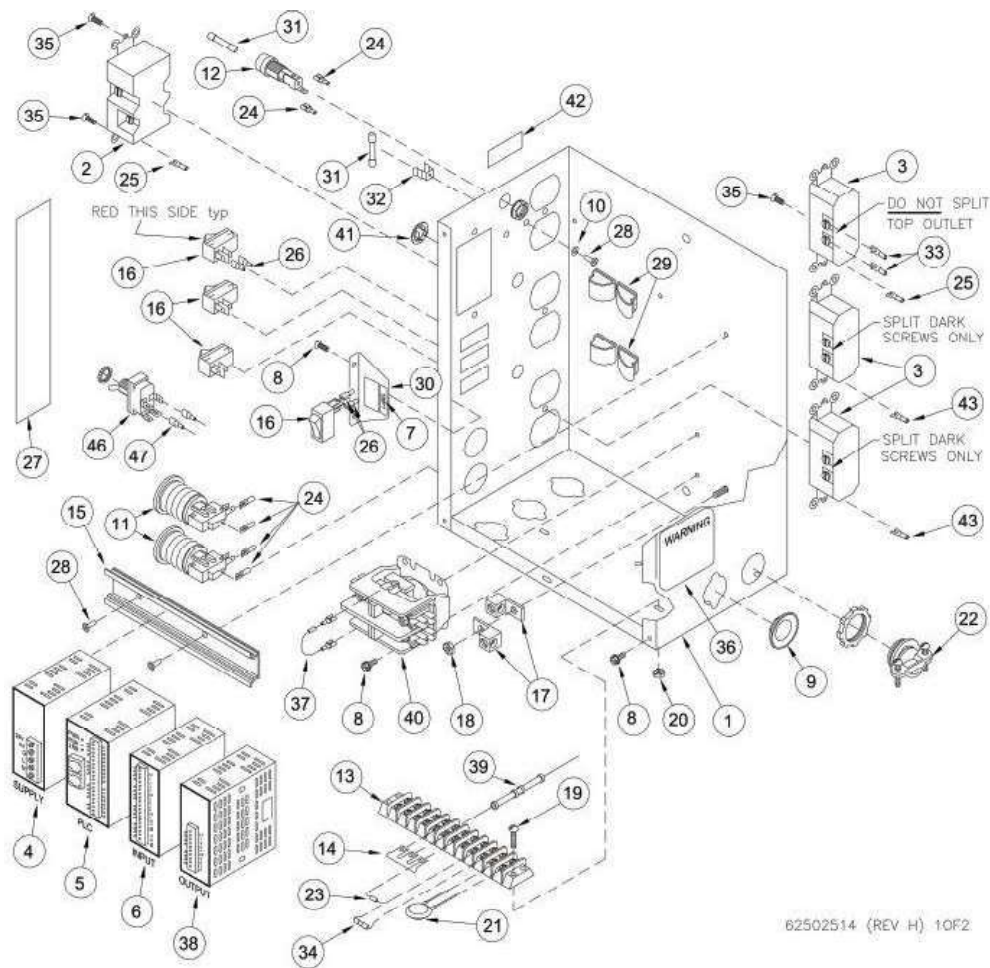


62500787 (REV A)  
249/C1779

REF. NO.	PART NUMBER	DESCRIPTION	REF. NO.	PART NUMBER	DESCRIPTION
1	62501652	Valve, 1/2 Ball	5	62500859	UV Light (5 GPM R-CAN) Assembly
2	62502594	Dual Check	*	62500854	Bulb, UV S463RL, R-CAN
3	62500658	Water Meter Machined (Gallon)	6	62501818	Nozzle 1/2 SS With Screen
3	62500790	Water Meter Machined (Metric)	S-2*	62501392	Valve, Plastic W/Screen & Flow Control
4	625-001-560	Filter Housing 10"	PS-3*	62502593	Switch, Pressure SPDT
4*	625-001-574	Filter, Carbon 10"			

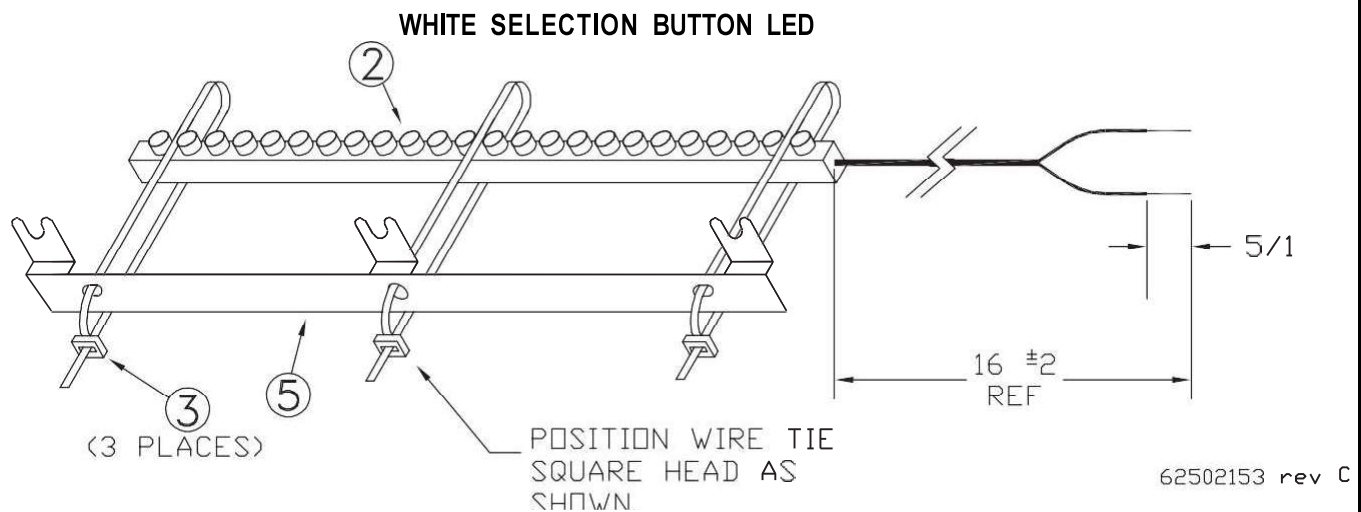
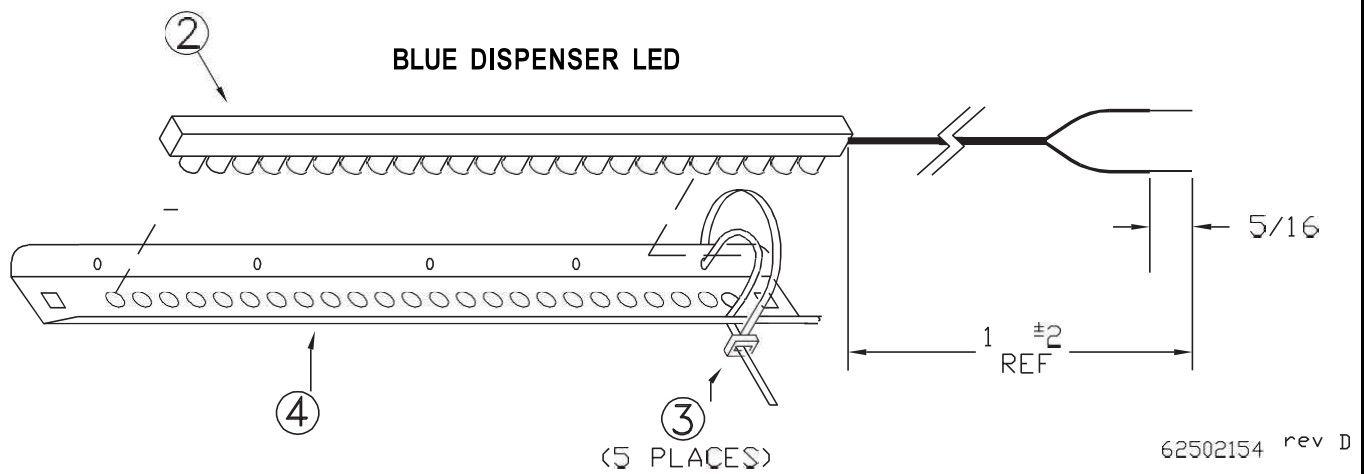
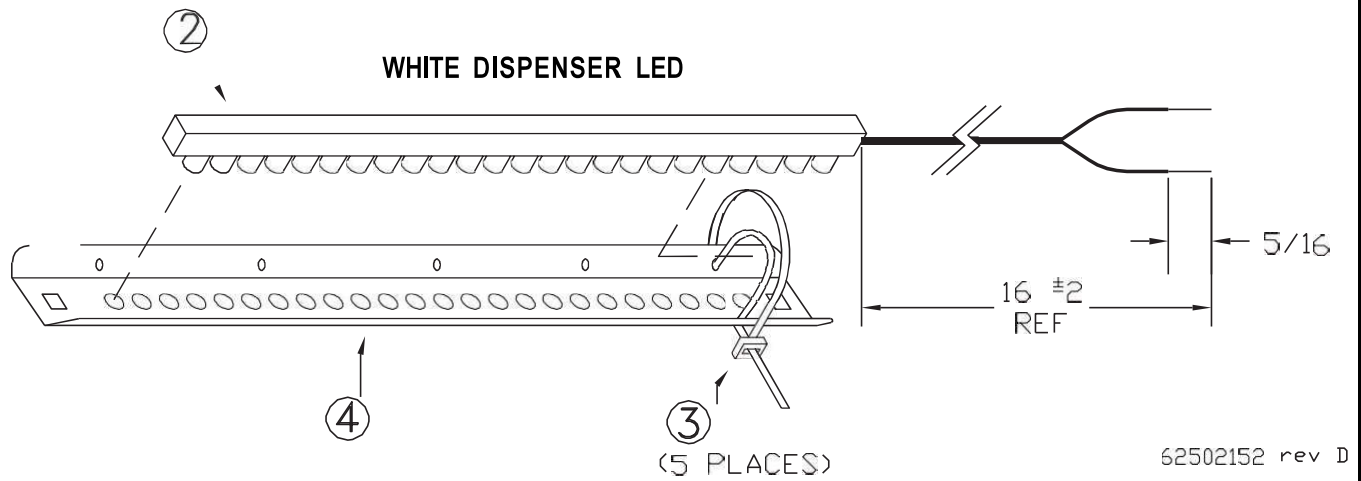
\* Recommended Spare Parts \*\* Additional Recommended Spare Parts

## ELECTRICAL BOX



REF. NO.	PART NUMBER	DESCRIPTION	QTY.	REF. NO.	PART NUMBER	DESCRIPTION	QTY.
1	62502525	Assembly, Dual Electrical Box	1	25	62502962	Terminal, Spade #10 16-14 Ga.	2
2	625-004-068	GFCI Receptacle, 15 Amp	1	26	62500702	Terminal, 1/4 F Ful Insulated 22-18	3
3	625-004-252	Receptacle, 15 Amp 110V	3	27	62502534	Decal, Dual Vend Operation	1
4	62502518	Module, 24 VDC Power Supply	1	28	954-002-010	Rivet 1/8 x 1/8 SS	3
5	62502522	PLC, 8/6 I/O W/Dual Program	1	29	62500156	Clamp, 3/4 Self Adhesive	4
6	62502523	Module, 16 Input 24 VDC	1	30	62502536	Bracket, Calibrate	1
7	62502537	Label, Run / Cal	1	31	62500634	Switch Fuse, 5A 3Ag 250V Fast	2
8	950-005-006	Self Tapping #8-36 x 3/8	6	32	62500635	Acting Fuse, Metal Clip 3Ag	1
9	625-004-073	Seal, Knockout 3/4 Steel	1	33	62502963	Terminal, Spade #10, 22-18 Ga.	2
10	952-004-068	Washer .2 x .44 SS	1	34	62501400	Fuse, 1A 2Ag Fast	1
11	62502780	Switch, SPST, Red Push Button	2	35	950-004-024	Machine Screw #6-32 x 3/8 Slotted Pan Head	5
12	39207034	Fuse Holder, 3Ag 1/4" Q-Conn.	1	36	625-002-075	Decal, Warning Elect	1
13	625-001-265	Term Block, 12 Pole, Jumper,	1	37	N/A	N/A	N/A
14	625-004-051	Snap Off Strip Style Din Rail,	3	38	N/A	N/A	N/A
15	625-900-334	Electrical Box	1	39	N/A	N/A	N/A
16	62502526	Switch, Rocker SPST	2	40	N/A	N/A	N/A
17	625-001-266	Term Block, Ground Lug Al 4-14 Wire	2	41	625-004-189	Plug BPF 1/2 Black Plastic	1
18	951-001-002	Nut-Hex #10-24	1	42	62502944	Label, Upper Outlet	1
19	950-004-086	Machine Screw #8-32 X 5/8	2	43	62502964	Terminal, Spade #10 10-12 Ga.	2
20	951-001-012	Nut-Hex #8-32	2	44	62502972	Connector IDC 18-14 AWG	1
21	39207032	Varistor, Surge Absorber 6500A	1	45	62502133	Connector T-Tap 22-18 Ga.	1
22	625-001-312	Fitting Elec, Romex Connect 3/4	1	46	62501603	Switch, Main Power Toggle DPST 1/4 F	1
23	62501684	Suppressor, 200V TVS 1500W	1	47	625-002-278	Terminal, 1/4F 14-16 AWG Full Insulation	2
24	62500631	Terminal, 3/16 F	6				

\* Recommended Spare Parts \*\* Additional Recommended Spare Parts



REF. NO.	PART NUMBER	DESCRIPTION	QTY.	REF. NO.	PART NUMBER	DESCRIPTION	QTY.
1	N/A	N/A	N/A	3	625-001-469	Tie Wrap, Nylon	5
2	62502071	Blue LED Strip 9.5 "	1	4	62502073	Bracket, Dispenser Light LED	1
	62502070	White LED Strip 9.5"	2	5	62502072	Bracket, Selection Button LED	1