

## SERVICE PARTS

---

It is the policy of Coster Engineering to constantly improve its products whenever it is practical to do so.

Coster Engineering must therefore reserve the right to redesign or change its equipment or component parts thereof without incurring the obligation to install or furnish such changes on equipment previously delivered.

### INSTRUCTIONS FOR ORDERING PARTS

1. The reference numbers in the illustrations correspond to the numbers shown in the "Reference Number" column in the parts listing. The quantity in the "number required" column is the number of parts used in the accompanying illustration. The term "A/R" for number required indicates "as required" where the quantity may vary. Order all parts by their part number and description.
2. Always mention the identification number of the code and serial numbers found on the name plate of the unit on which the part is to be used. Much delay and confusion can be avoided when correct numbers are specified on parts order and correspondence.
3. Owner, order all parts through your local dealer.
4. Dealers must indicate how to ship; whether by truck, rail freight, express, or parcel post.
5. Collect phone calls are not accepted.
6. Address all orders for parts as follows:

**COSTER ENGINEERING**  
**217 E PLUM STREET**  
**MANKATO, MN 56001**  
**PH (844) 975-1100**  
**FAX (507) 549-1101**  
**costerwater.com**

### INSTRUCTIONS FOR RETURNING PARTS FOR ADJUSTMENT

1. To assure prompt handling of claims, your dealers should follow standard claim and forward claim procedures within thirty (30) days, of any part failure or malfunction believed to be a warranty claim.
2. No returned part will be accepted unless they are transportation prepaid and accompanied by the packing list, copy of the returned goods authorization form, or the packing list copy of the warranty claim form.
3. Parts returned should have a tag attached with sender's name and address clearly printed.

### DISCLAIMER

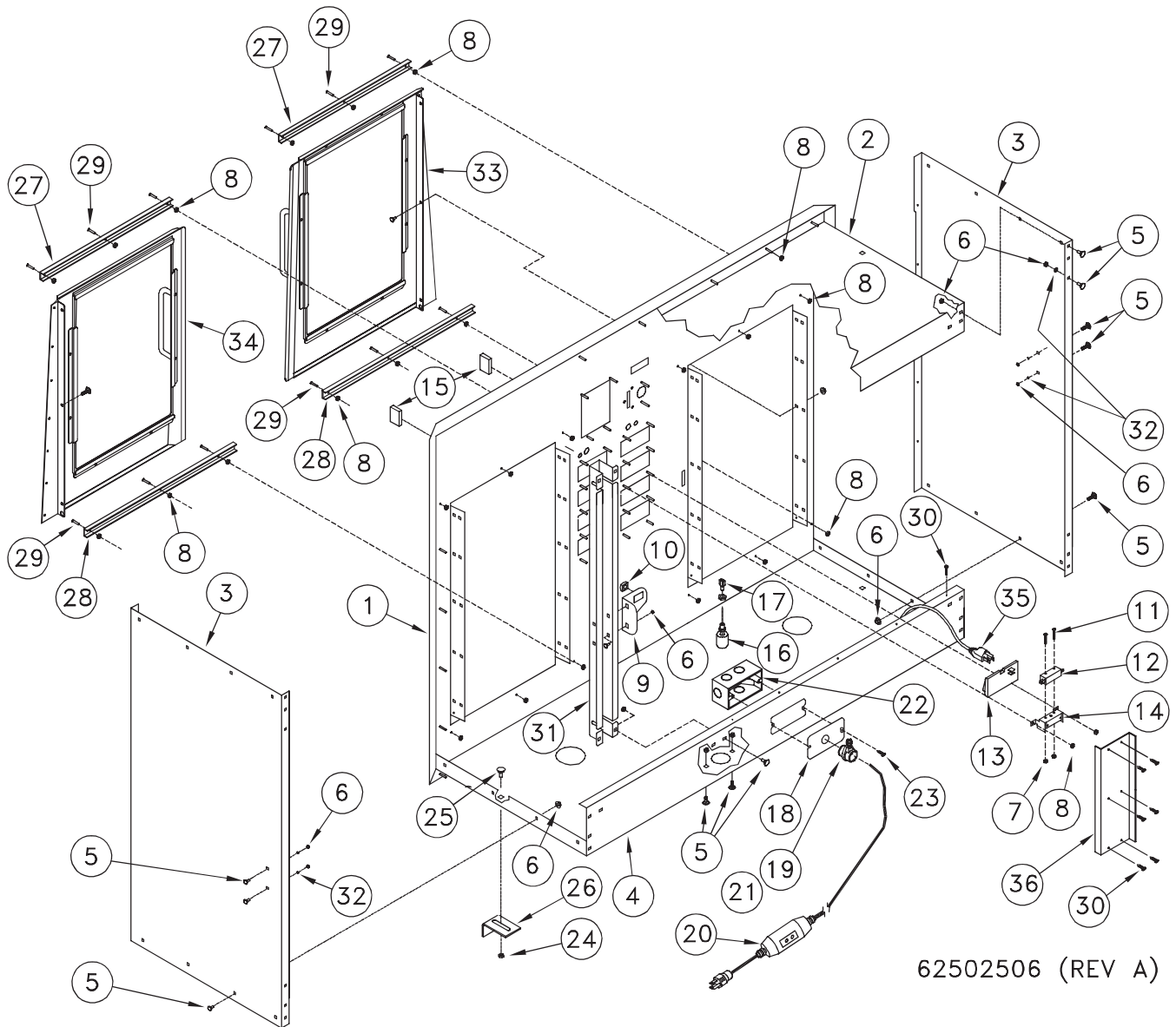
This supplement contains additional information that is specific to units. It is used in conjunction with the basic machine operator's manual which includes safety and operational information.

Retain all manuals for future reference. Read all and understand all manuals in their entirety before operation or service.

The information contained in this manual is subject to change without notice.

Coster Engineering shall not be liable for technical or editorial omissions made herein; nor for incidental or consequential damages resulting from the furnishing, performance, or use of this material.

## MAIN CABINET

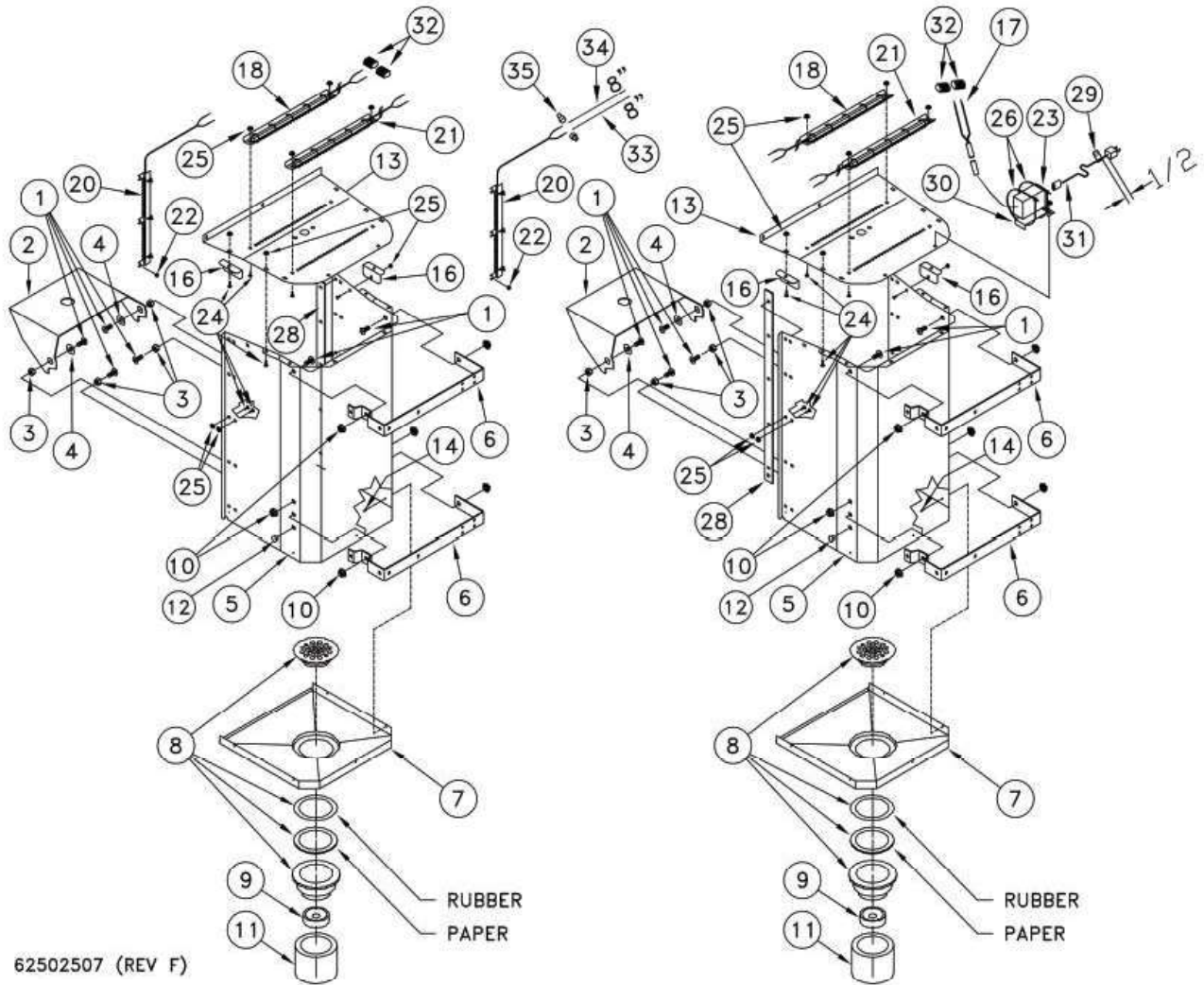


62502506 (REV A)

REF. NO.	PART NUMBER	DESCRIPTION	QTY.	REF. NO.	PART NUMBER	DESCRIPTION	QTY.
1	62502501	Cab, Face Dual 200W	1	19	62500498	Strain Relief	1
2	62502502	Top, Dual 200W	1	20	62502175	GFCI Inline Power Cord	1
3	62502031	Panel Side	2	21	625-004-092	Wire Nut Yellow (Not Shown)	3
4	62502503	Panel, Bottom Dual 200	1	22	62502036	Box 2 1/8 x 4 x 1 7/8 Plast	1
5	950-003-071	Carriage Bolt, #10-24-1/2 SS	44	23	950-005-014	Self Tapping Screw #6-32 x 1 Shw Head	2
6	951-002-012	Hex Nut #10-24 Whiz Lock	44	24	951-002-002	Nut-Flanged Whiz Lock 5/16-18	4
7	951-001-001	Nut-Hex #6-32	16	25	950-003-002	Carriage Bolt 5/16-18 x 1/2 G5 SS	4
8	951-001-012	Nut - Hex #8-32	68	26	625-901-060	Bracket Cab Mount	4
9	62502034	Bracket, Latch Win	1	27	62502049	Channel, Top	2
10	625-001-075	Vending Part, Nut 1/2-13	1	28	62502050	Channel, Bottom	2
11	700-10904	Machine Screw #6-32 x 1 Slotted Pan Head	16	29	625-005-182	Stud, #8-32 x 3/4 Ss	12
12	62500615	Switch, Spst, Cherry Micro	8	30	392-010-028	Self Tapping Screw 8-18 x 1/2 Shw Head	13
13	62500617	Switch, Rect. Push Button	8	31	62502504	Channel, Latch Dual 200W	1
14	62500618	Bracket, Rect. Button Mnt	10	32	952-004-068	Washer, #10 SS .2 x .44 x .05	6
15	62500753	Fastener, Magnetic Catch, Snap In	2	33	62502714	LH Door Assembly (Service Part)	1
16	625-001-325	Level Switch, N/C Float & Stem	1	34	62502713	RH Door Assembly (Service Part)	1
17	62500691	Sold. Term 1/4M 22-18 Full Ins	2	35	62502516	Plug, 120V UV Extension	1
18	62502035	Cover, Elec Cord	1	36	62500652	Guard, Dual Coin	2

\* Recommended Spare Parts \*\* Additional Recommended Spare Parts

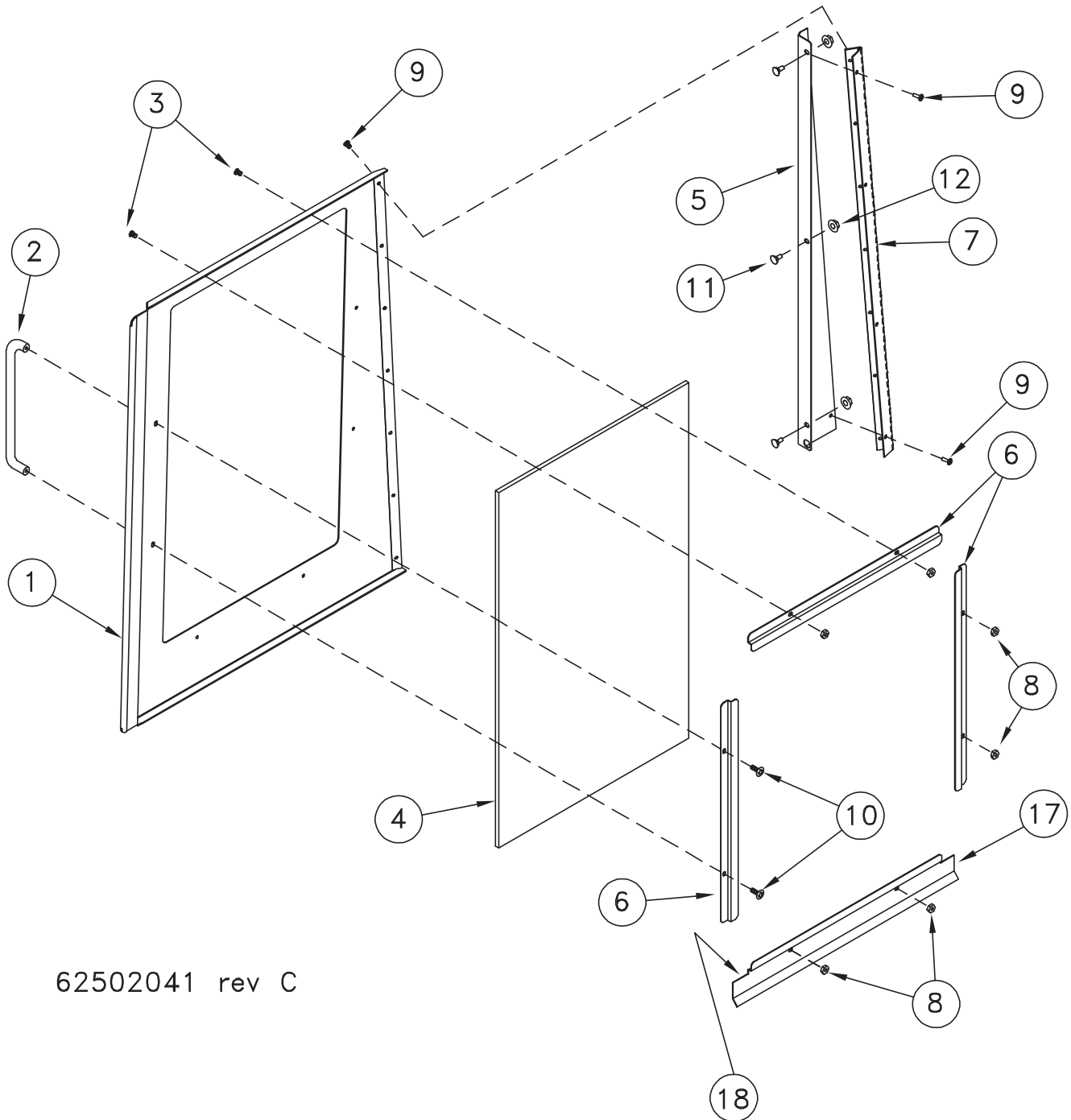
## DISPENSER HOUSING



REF. NO.	PART NUMBER	DESCRIPTION	QTY.	REF. NO.	PART NUMBER	DESCRIPTION	QTY.
1	950-011-063	Socket Button Head 3/8-16 x 3/4 SS	12	19	625-001-469	Tywrap, 1/6-5/8 Dia 5L	12
2	625-900-303	Shelf, Dispenser	2	20	62502153	Led Sel Button Light	2
3	061910	Hex Nut 3/8-16 SS	8	21	62502154	Led Disp Light, Blue	2
4	061916	3/8 Flat Washer SS	4	22	951-001-012	Nut Hex, #8-32	6
5	62502038	Housing Flange Dispenser	2	23	62502950	Power Supply, Led Lights	1
6	625-900-300	Bracket, UV Light	4	24	950-003-071	Carriage Bolt, #10-24-1/2 SS	58
7	62500743	Drain Pan, Flare Side	2	25	951-002-012	Hex Nut #10-24 Whiz Lock	58
8	625-001-741	Drain PVC Shower Stall	2	26	367-001-011	Cable Tie, 14"	2
9	62500770	Fitting, Rb 2" SI x 1" Thread	2	27	N/A	N/A	N/A
10	951-002-003	Nut-Lock Hex Whiz Lk 3/8-16	12	28	62502752	Bracket, Splash Guard	2
11	625-901-062	Seal Drain	2	29	62502931	Label, LED Cord	1
12	62500922	Plug, 3/8 Locking Hole, Black Plastic	4	30	62502951	Bracket, Power Supply	1
13	62502039	Top Dispenser Flange	2	31	62502949	Power Cord, 6 Ft.	1
14	954-002-010	Rivet-Pop 1/8X 1/8 Stain OEDH	10	32	62502986	Connector, Lever Nut	4
15	N/A	N/A	N/A	33	62500601	Wire Blue	0.7
16	62502062	Brckt, Housing	4	34	62500607	Wire White/Red	0.7
17	62502151	Harness, Led Power Supply	1	35	62500123	Closed End Connector	3
18	62502152	Led Disp Light, White	2				

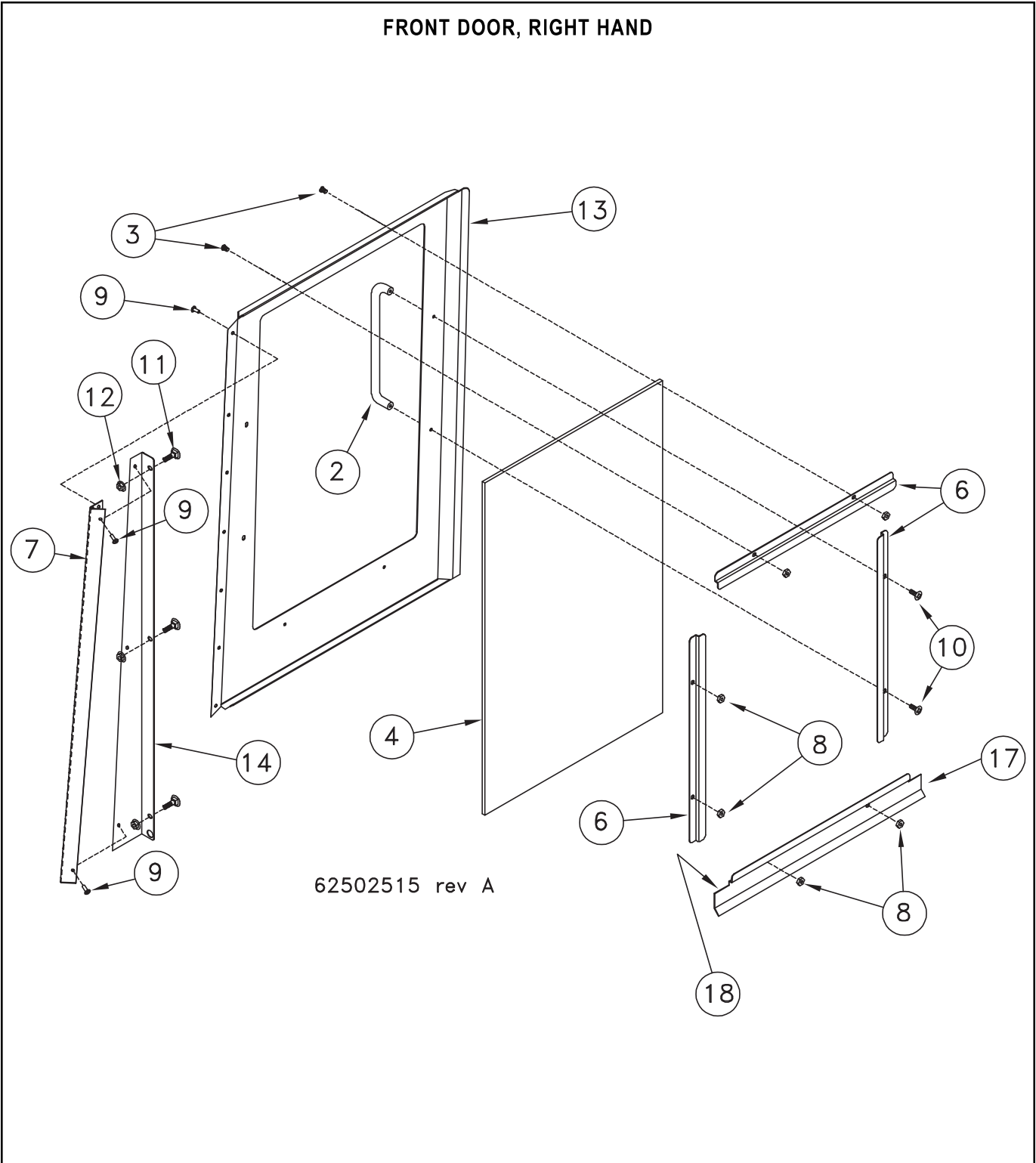
\* Recommended Spare Parts \*\* Additional Recommended Spare Parts

## FRONT DOOR, LEFT HAND



REF. NO.	PART NUMBER	DESCRIPTION	QTY.	REF. NO.	PART NUMBER	DESCRIPTION	QTY.
1	62502714	LH Door Assembly (Service)	1	8	951-003-017	Lock Nut #6-32	6
1	62502042	Door Front LH (Part Only)	1	9	954-002-010	Rivet-Pop 1/8 x 1/8 Stain Oedh	9
2	62502043	Handle, Round Door	1	10	950-011-056	Machine Screw #8-32 x 1/2 Round Head	2
3	950-011-062	Tamper Resistant Screw #6-32 x 1/4	6	11	950-003-071	Carriage Bolt 10-24 SS	3
4	62501928	Panel, Clear Acrylic Door	1	12	951-002-012	Hex Nut 10-24 Whiz Lock	3
5	62502045	Bracket, Hinge LH	1	13	N/A	N/A	N/A
6	62502046	Bracket, Retainer	3	17	62502751	Bracket, Splash Guard	1
7	62502047	Hinge, Door	1				

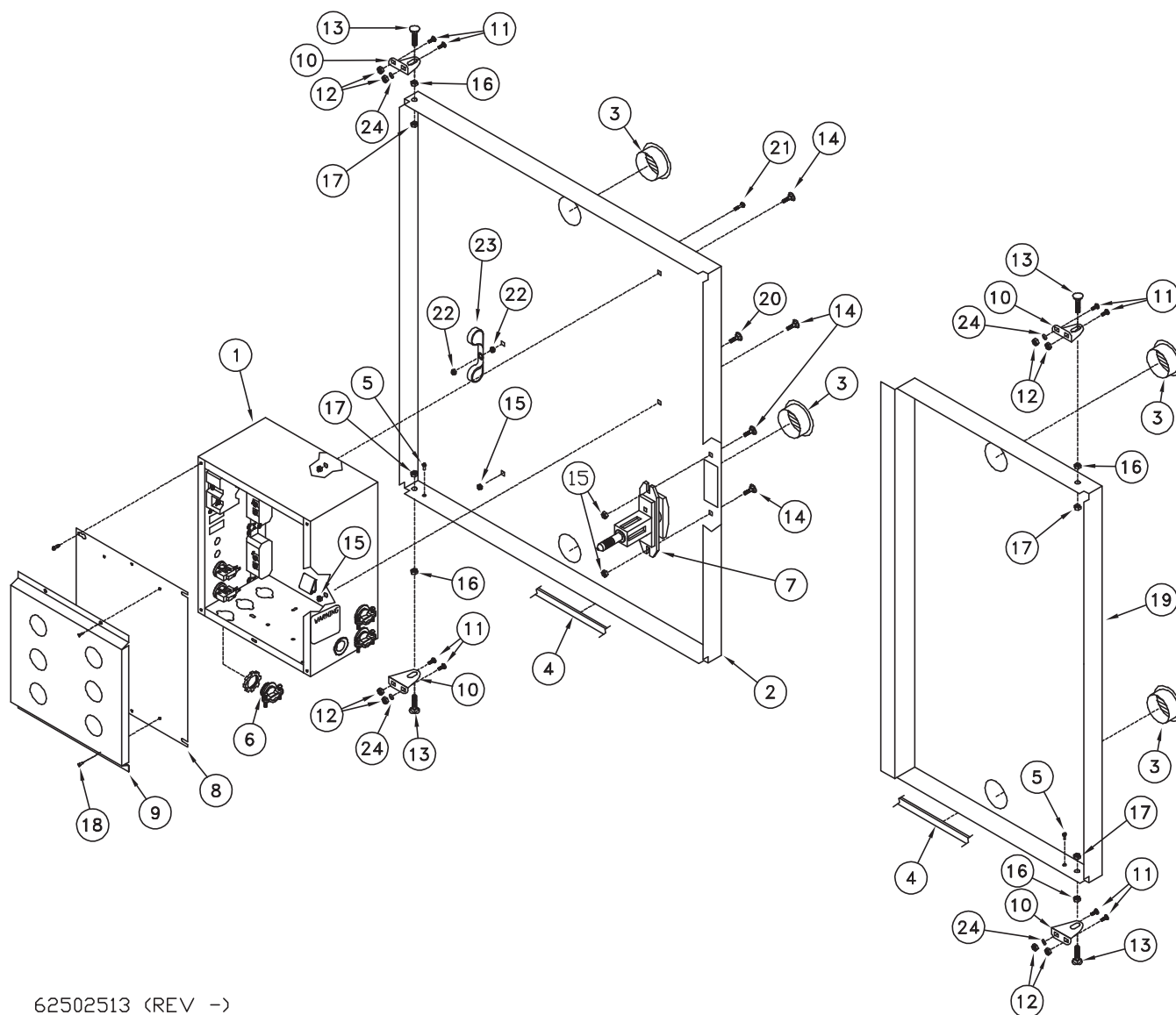
\* Recommended Spare Parts \*\* Additional Recommended Spare Parts



REF. NO.	PART NUMBER	DESCRIPTION	QTY.	REF. NO.	PART NUMBER	DESCRIPTION	QTY.
1	62502713	Door Assembly RH (Service)	1	10	950-011-056	Mach Screw #8-32 x 1/2 Round Head 1-WYSS	2
2	62502043	Handle, Round Door	1	11	950-003-071	Carriage Bolt, #10-24-1/2 SS	3
3	950-011-062	Button-Socket 6-32 x 1/4 Tamper SS	6	12	951-002-012	Hex Nut #10-24 Whiz Lock	3
4	62501928	Panel, Clear Acrylic Door	1	13	62502500	Door Front RH	1
5	N/A	N/A	N/A	14	62502508	Bracket, Hinge RH	1
6	62502046	Bracket, Retainer	3	15	N/A	N/A	N/A
7	62502047	Hinge, Door	1	16	N/A	N/A	N/A
8	951-003-017	Locknut, 6-32 Thin Nylon SS	6	17	62502751	Bracket, Splash Guard	1
9	954-002-010	Rivet-Pop 1/8 x 1/8 Stain OEDH	9				

\* Recommended Spare Parts \*\* Additional Recommended Spare Parts

## REAR DOOR

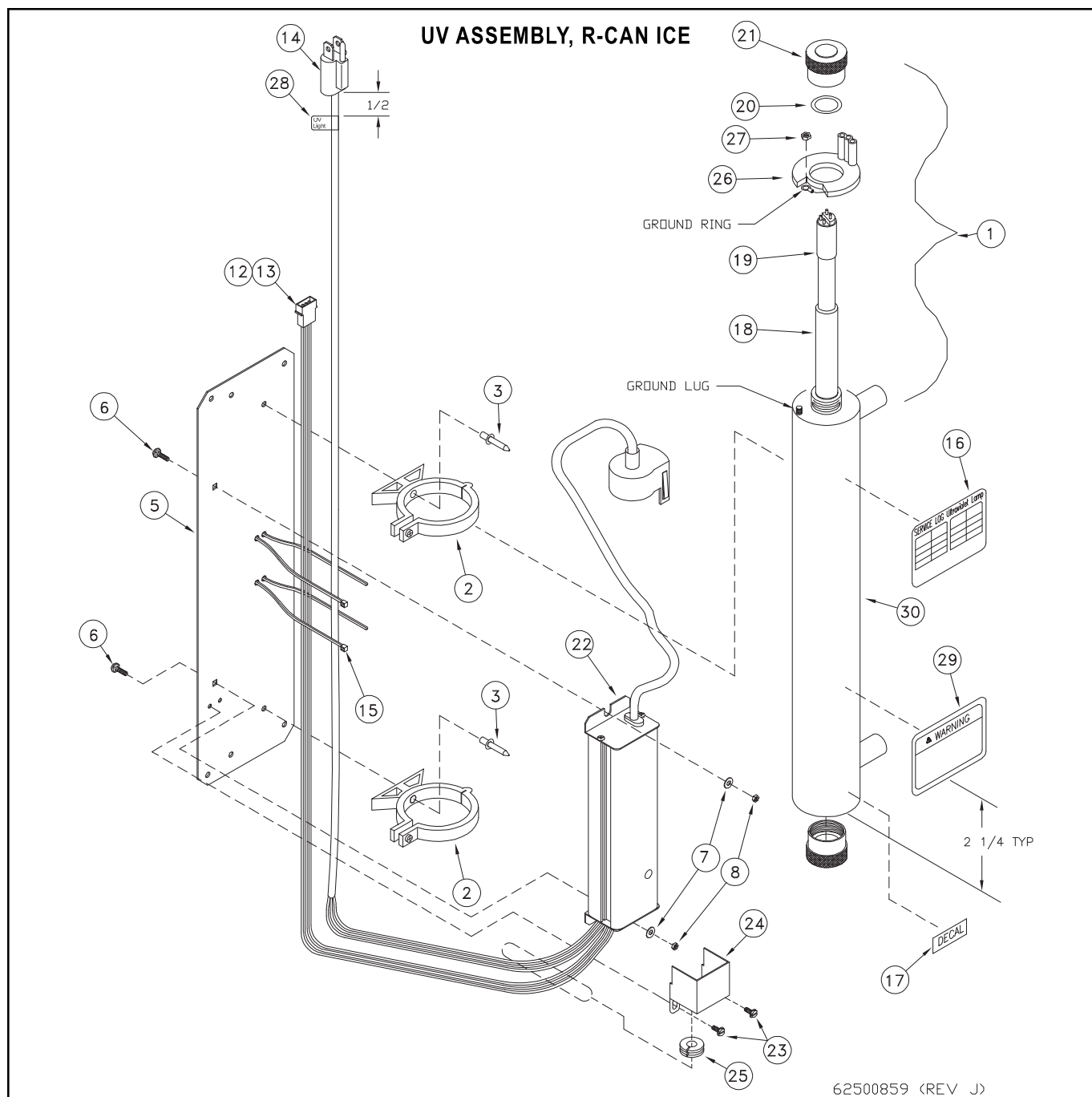


62502513 (REV -&gt;)

REF. NO.	PART NUMBER	DESCRIPTION	QTY.	REF. NO.	PART NUMBER	DESCRIPTION	QTY.
1	62502514	Assembly, Click Electrical Box	1	13	950-003-039	Carriage Bolt, 5/16-18 x 1 Gr. 5 Short	4
2	62502020	Door Rear Cabinet	1	14	950-003-065	Carriage Bolt, 1/4-20 x 5/8 Gr. 5	4
3	625-001-965	Vent, 2" Diameter Aluminum Louvered	4	15	951-002-001	Hex-Flanged Whiz Lock Nut 1/4-20	5
4	62501337	Trim, Edge Guard 1/8"	14.2	16	951-002-002	Hex-Flanged Whiz Lock Nut 5-16-18	4
5	392-010-028	Self Tapping Screw 8-18 x 1/2 Shw Head	2	17	951-003-001	Nut-Nylon Insert 5/16-18	4
6	625-001-312	Romex Connector, 3/4	1	18	954-002-010	Rivet-Pop 1/8 x 1/8 Stain OEDH	4
7	625-005-166	T-Handle Lock Flush Mount	1	19	62502505	Door, Rear Cover Dual 200W	1
8	625-900-333	Cover, Electrical Box	1	20	950-004-002	Bolt, 1/4-20 x 3/8	1
9	625-900-774	Bracket, Literature	1	21	392-010-020	#8-32 x 3/4 Machine Screw	1
10	62502021	Bracket, Hinge	4	22	951-001-012	#8-32 Hex Nut	2
11	950-003-071	Carriage Bolt, #10-24 x 1/2 SS	8	23	62501394	Cable Clamp 3/4" Nylon	2
12	951-002-012	Hex-Flanged Whiz Lock Nut #10-24	8	24	952-004-068	Washer, #10 SS .2 x .44 x .05	4

\* Recommended Spare Parts \*\* Additional Recommended Spare Parts

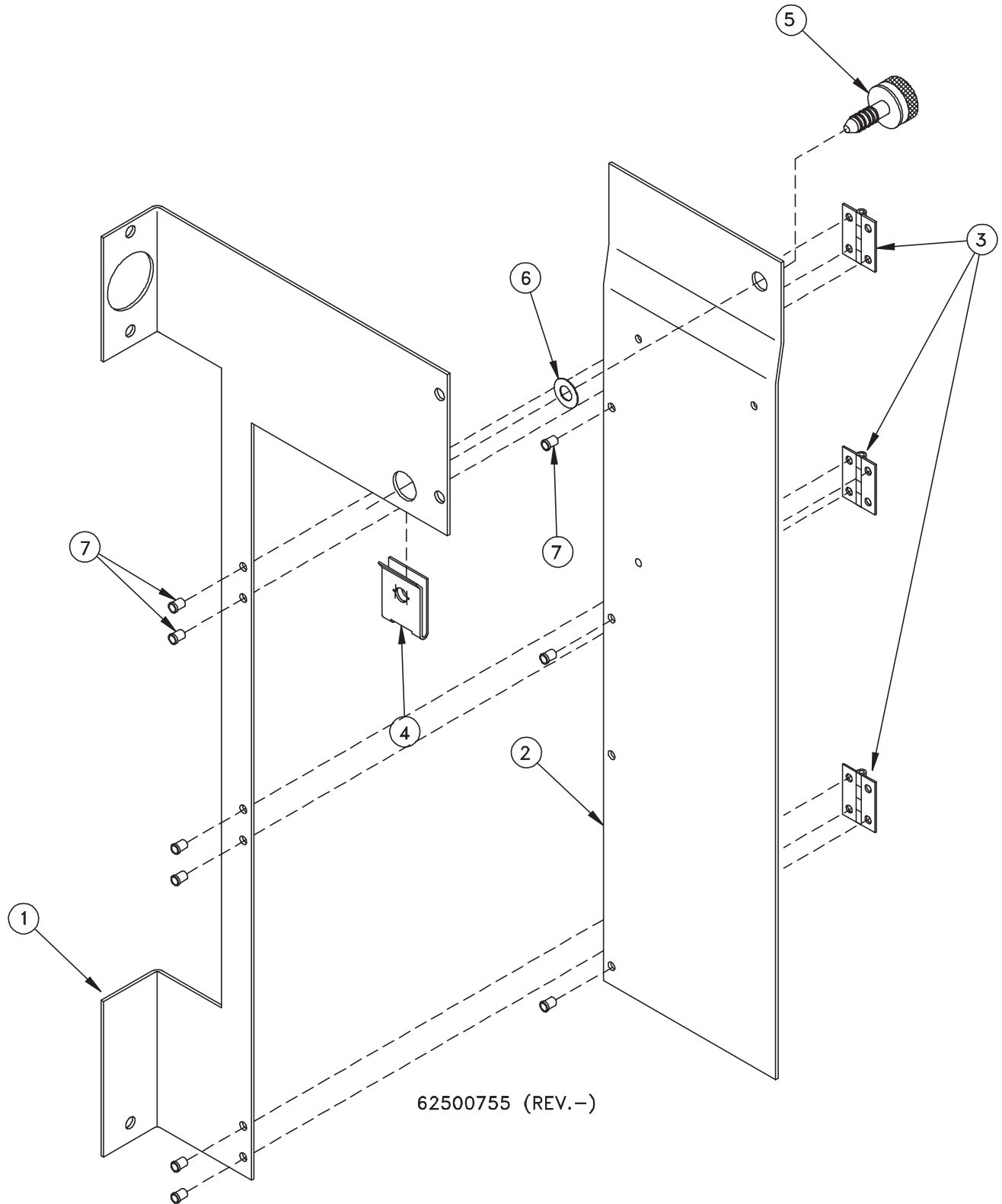




REF. NO.	PART NUMBER	DESCRIPTION	QTY.	REF. NO.	PART NUMBER	DESCRIPTION	QTY.
1	62502822	Light, 5 GPM Uv R-Can (INC 16 & 22)	1	16	62502938	Decal, Service Log	1
2	-----	Clip Included W/Item 1	2	17	62500940	Decal, Bulb Replacement	1
3	954-002-003	Rivet-Pop 3/1 x 3/8 Stain OEDH	2	18*	62500855	Sleeve, Quartz UV QS-463	1
4	N/A	N/A	N/A	19*	62500854	Light, UV S463RL R-Can	1
5	625-901-072	BRK 5 GPM Trojan MNT	1	20	62500853	O-Ring, 5 Gpm UV OR-212	1
6	950-003-071	Bolt CGE #10-24 x 1/2 SS	2	21	62500857	Nut, UV AL Gland RN-001	1
7	952-004-062	Washer, 1/4 SS	2	22	62500856	Ballast Electronic BA-ICE-VI	1
8	951-001-002	Nut-Hex #10-24 SS	2	23	061034	Self Tapping Screw #6-32 x 3/16	2
9	625-004-026	Wire, Blue #18 (16/30) UI-1007	2	24	62501719	Electrical Cover	1
10	625-004-172	Wire, Black #18 (16/30) UI-1007	2	25	62501720	Grommet	1
11	625-004-028	Wire, Red 18 (16/30) UI-1007	2	26	N/A	Connector, Included With Item 1	N/A
12	62500641	Pin, 24-18 AWG Mate-N-Lok	3	27	N/A	Nut, Included With Item 1	N/A
13	62500682	Housing, 3 Pin Mate-N-Lok	1	28	62502930	Label, UV Cord	1
14	62500690	Plug, W/18-3 SJT 110V 59" Cord	1	29	62502939	Decal, UV Warning (Included With Item 1)	1
15	625-001-469	Tywrap, 1/6-5/8 DIA. 5 L	2	30	62503053	Canister, (Includes Item 16 & 29)	1

\* Recommended Spare Parts \*\* Additional Recommended Spare Parts

## COIN MECHANISM BRACKET ASSEMBLY



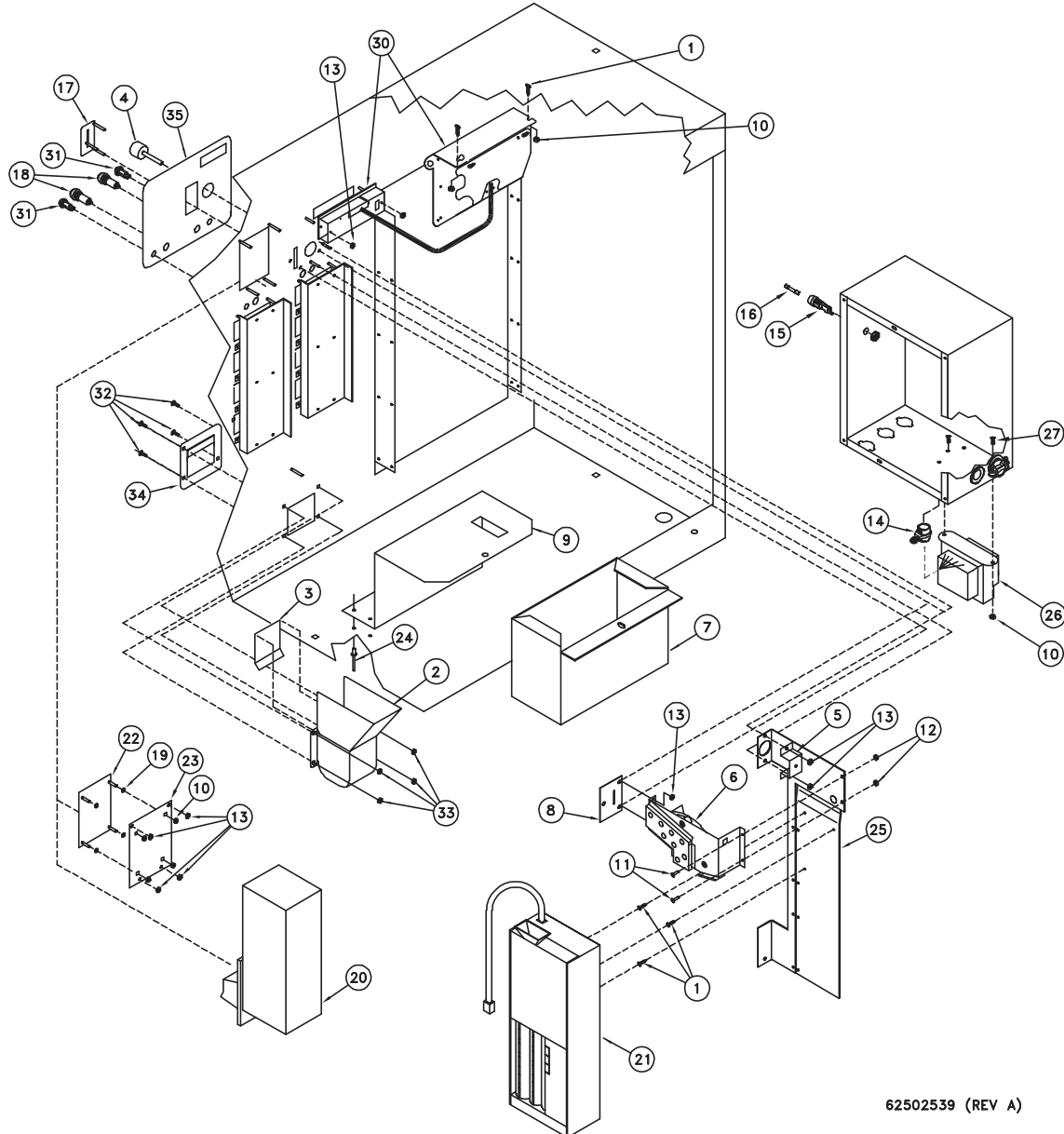
62500755 (REV.-)

REF. NO.	PART NUMBER	DESCRIPTION	QTY.	REF. NO.	PART NUMBER	DESCRIPTION	QTY.
1	62500747	Bracket Coin Changer Hinge MT	1	5	106-002-028	Filter Cover Screw 17-13-204-11	1
2	625-901-057	Bracket Coin Changer MT	1	6	106-001-007	Filter Cover Washer 17-10014-12	1
3	62500763	Hinge, 1 x 3/4 x .035 Butt	3	7	954-002-010	Rivet-Pop 1/8 x 1/8 Stain OEDH	9
4	106-001-008	Clip On Receptacle 17-10017-11	1				

\* Recommended Spare Parts \*\* Additional Recommended Spare Parts



## COIN MECHANISM SECTION



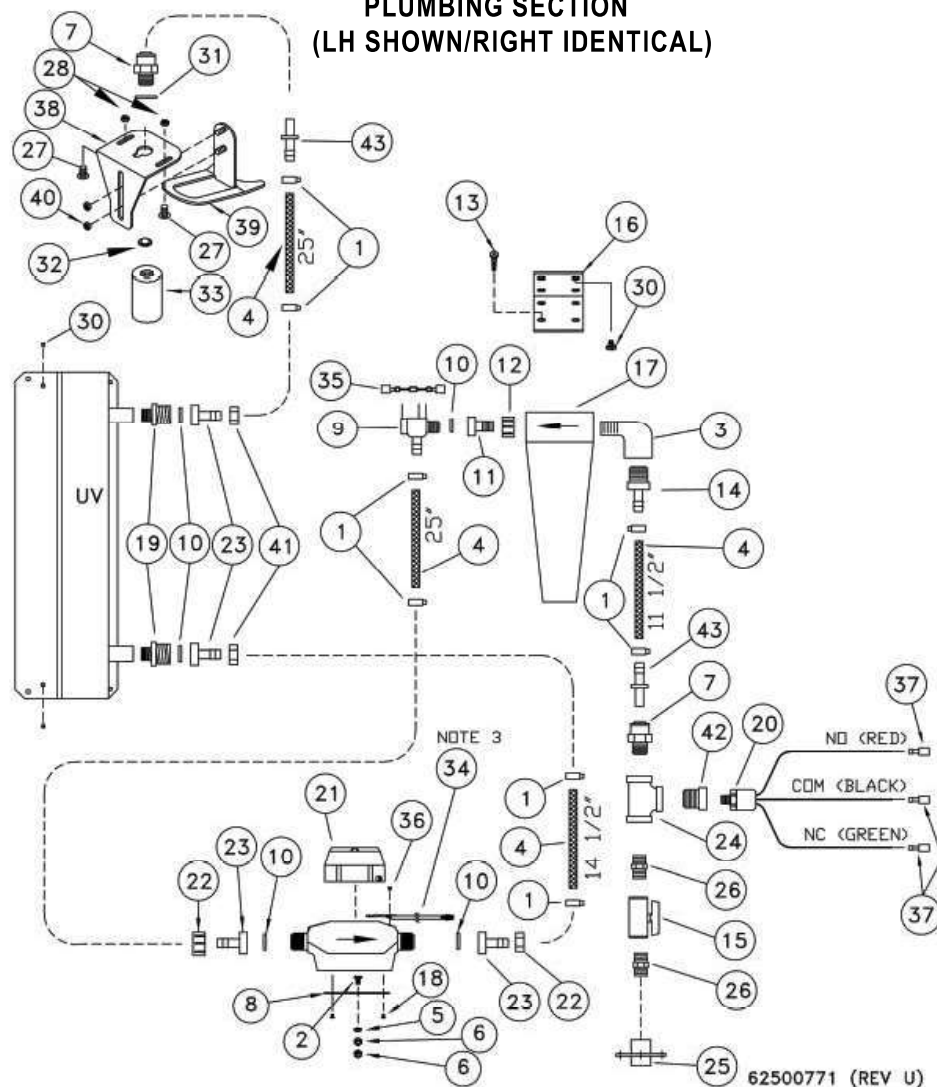
62502539 (REV A)

REF. NO.	PART NUMBER	DESCRIPTION	QTY.	REF. NO.	PART NUMBER	DESCRIPTION	QTY.
1	392-010-028	Self Tapping Screw #8-18 x 1/2 Shw Head	5	19	62502437	O-Ring, #008 Buna N	4
2	62501484	Coin Return, SS (Includes 3)	1	20	62501893	MDB Bill Validator List	0
3	625-004-766	Coin Return Door SS	1	21	62501892	MDB Coin Changer List	0
4	625-004-768	Button, Coin Return	1	22	62502374	Plate Bill Cover Spacer	1
5	625-004-769	Bracket, Coin Return Button	1	23	62501727	Plate, Bill Cover Backer	1
6	62501280	Bracket Assembly, Coin Return	1	24	109953	3/16 SS Rivet	4
7	625-900-777	Wld, Large Cash Box	1	25	62500755	Bracket, Hinged Coin Mech Mt 4 Sel	1
8	625-901-091	Coin Slot Guard	1	26	62503149	Transformer, Control 75Va	1
9	62501326	Bracket Cash Box	1	27	950-004-061	#8-32 x 1/2 Pann Truss Head, SS	2
10	951-003-011	Nut Hex Lock 8-32	8	28	62500691	Terminal, 1/4M 22-18 (Not Shown)	1
11	950-004-024	Machine Screw, #6-3/8 Slotted Pan Headd	2	29	62500631	Terminal, 3/16 Sdrl (Not Shown)	1
12	951-001-001	Nut, Hex, #6-32	2	30	62502018	Sec, VMC/Cable/Display & Brackets	1
13	951-001-012	Nut, Hex, #8-32	11	31	62502538	Light, Red Panel Led 24V	2
14	62500498	Strain Relief	1	32	950-003-081	Carriage Bolt, #10-24-3/4 SS	4
15	39207034	Fuse Holder	1	33	951-002-012	Hex Nut #10-24 Whiz Lock	4
16	62500634	Fuse 5 A 3 AG	1	34	62502076	Plate, Coin Guard	1
17	62500647	Coin Slot, SS	1	35	62502075	Decal, Instr, Vend, Elec Coin	1
18	62502009	Switch, Spst, Red Push Button	2	36	62500123	Connector, 22-16 Awg (Not Shown)	1

\* Recommended Spare Parts \*\* Additional Recommended Spare Parts



# PLUMBING SECTION (LH SHOWN/RIGHT IDENTICAL)



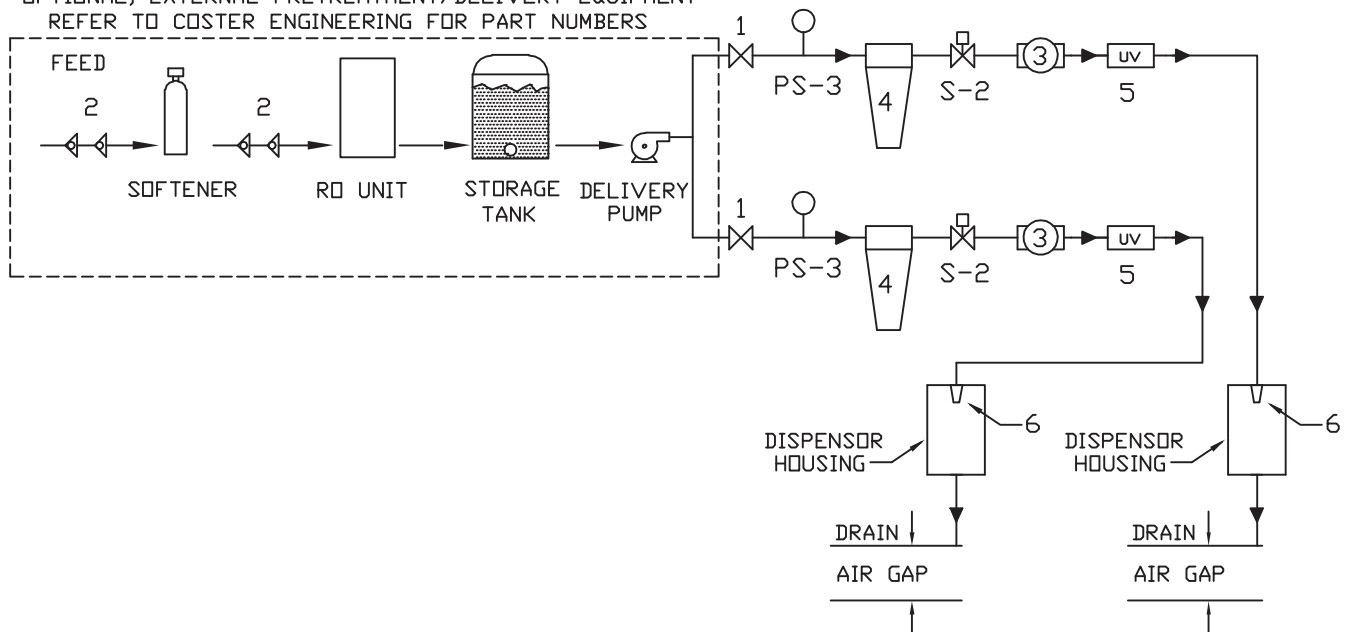
REF. NO.	PART NUMBER	DESCRIPTION	QTY.	REF. NO.	PART NUMBER	DESCRIPTION	QTY.
1	625-002-881	Hose Clamp, .76-.89 SS	8	23	62500423	Barb-Swivel, 1/2 H	4
2	950-003-065	Carriage Bolt 1/4-20 x 5/8 Gr. 5	1	24	62502606	Fitting, SS Tee, 1/2	1
3	62501655	Fitting, Nylon 1/2 Street 90	1	25	62502608	Weldment, SS Bulk Head	1
4	625-001-929	Hose, 1/2 Dia Braided	6.5	26	62501169	Fitting, Nylon Nipple 1/2	2
5	033-12007	Flat Washer, SAE 5/16 PI	1	27	950-003-071	Carriage Bolt, 10-24 SS	2
6	060102	Nut, Jam 1/4-20	2	28	951-002-012	Nut, Hex 10-24	2
7	625-001-672	Fitting, 1/2 x 1/2 JG	1	29	N/A	N/A	N/A
8	62500657	Bracket, Water Meter	1	30	392-010-028	Self Tapping Screw 8-18 x 1/2 Hex Head	6
9	62501392	Solenoid Valve, Plastic, 5 GPM	1	31	39212011	Seal Ring 1/2	1
10	625-004-467	Washer, GHT White. Rubber	5	32*	62501815	Screen, 1/2 Nozzle	1
11	62501814	Fitting, 1/2m x Swivel	1	33	62501818	Nozzle Assembly, W/Screen 1/2"	1
12	62501459	Nylon Nut Assembly W/Hose Clamp	1	34	62500661	Assembly, Water Meter Sensor	1
13	950-005-020	MS, #10-16 x 3/4 Hex Self Tap	4	35	62502132	TVS Surge Suppressor	1
14	62500417	Fitting, Nylon 1/2 x 1/2	2	36	392-010-019	Self Tapping Screw #6-20 x 3/8 Phillips Pan Head	2
15	62501652	Valve, 2 Way Ball PVC, 1/2	1	37	62500691	Terminal 1/4 Male Push On	3
16	62501823	Bracket, Filter Housing, 1/2	1	38	62501122	Bracket, Upper Guide	1
17	62501813	Filter Housing, 1/2 Slimline	1	39	62501121	Bracket, Lower Guide	1
18	950-005-027	Hex Head Self Tapping Screw 8-18 x 3/8 AB	4	40	061605	Nut, 1/4-20 SS Nylon Lock	2
19	62501793	Fitting, Nylon 3/8m x 3/4mgh	2	41	62500443	Nylon Nut, Ght	2
20	62502593	Press Switch SPDT	1	42	62502716	Fitting, SS Rb 1/2 x 1/4	1
21	62500658	Water Meter, Machined (Gallon)	1	43	62500522	Fitting, 1/2 Stem x 1/2 Hose Barb	1
22	625-002-955	Fitting, Swivel Nut Blk 3/4 Fps	2				

\* Recommended Spare Parts \*\* Additional Recommended Spare Parts

## FLOW DIAGRAM

FLOW DIAGRAM  
DUAL CTV-200

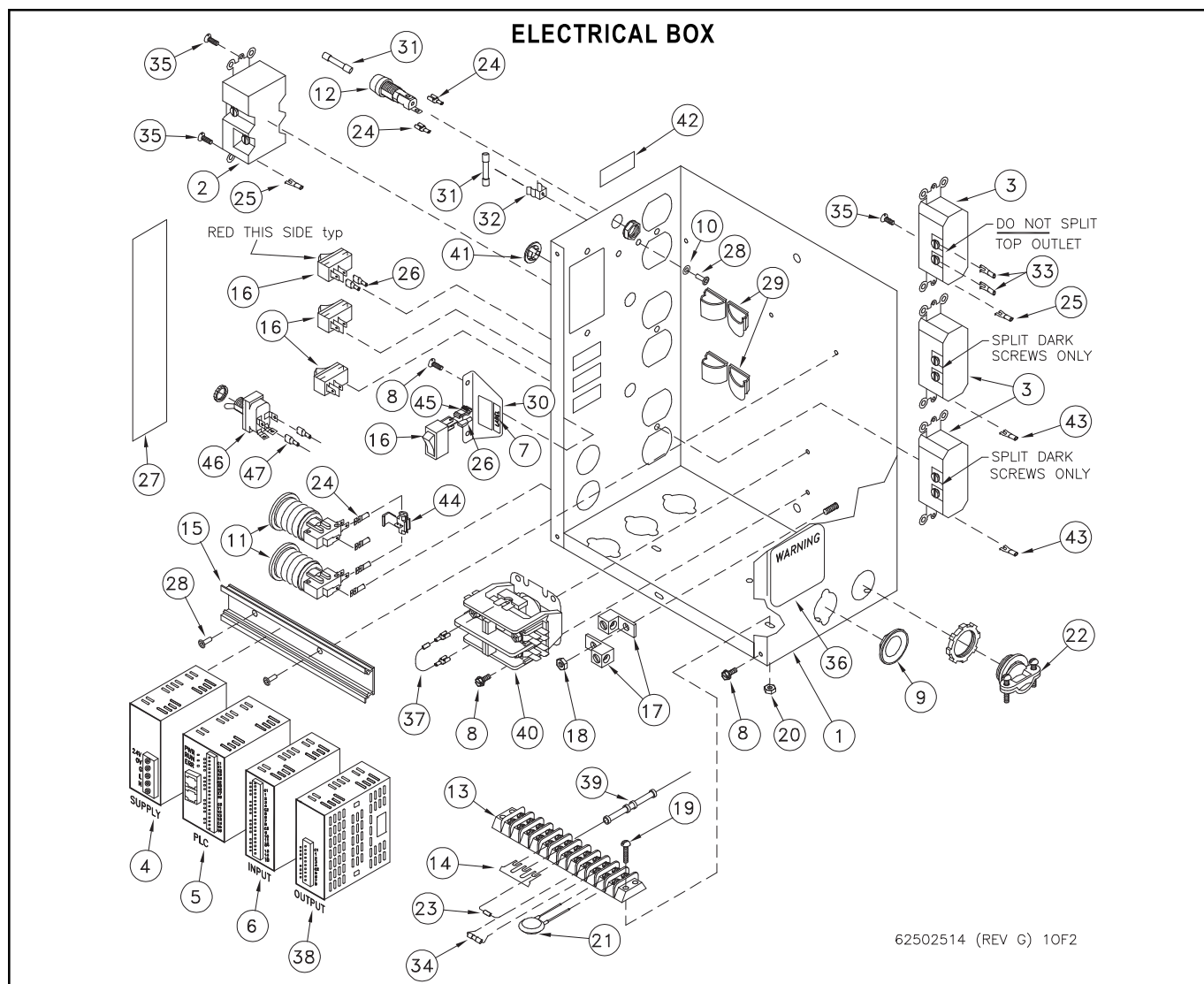
OPTIONAL, EXTERNAL PRETREATMENT/DELIVERY EQUIPMENT  
REFER TO COSTER ENGINEERING FOR PART NUMBERS



62502517 (REV -)

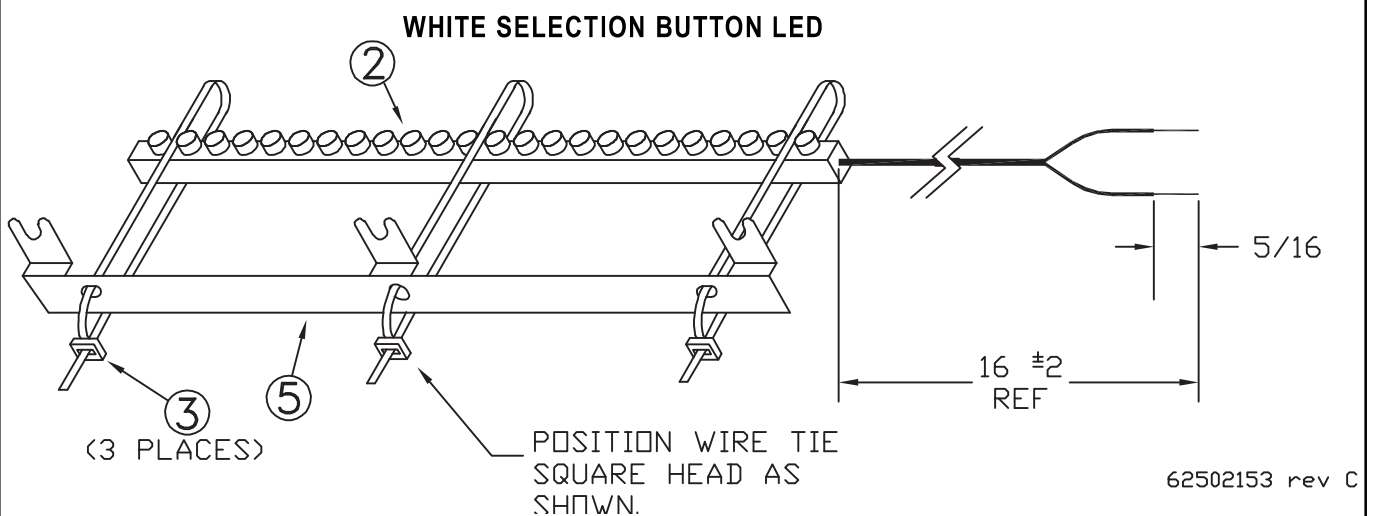
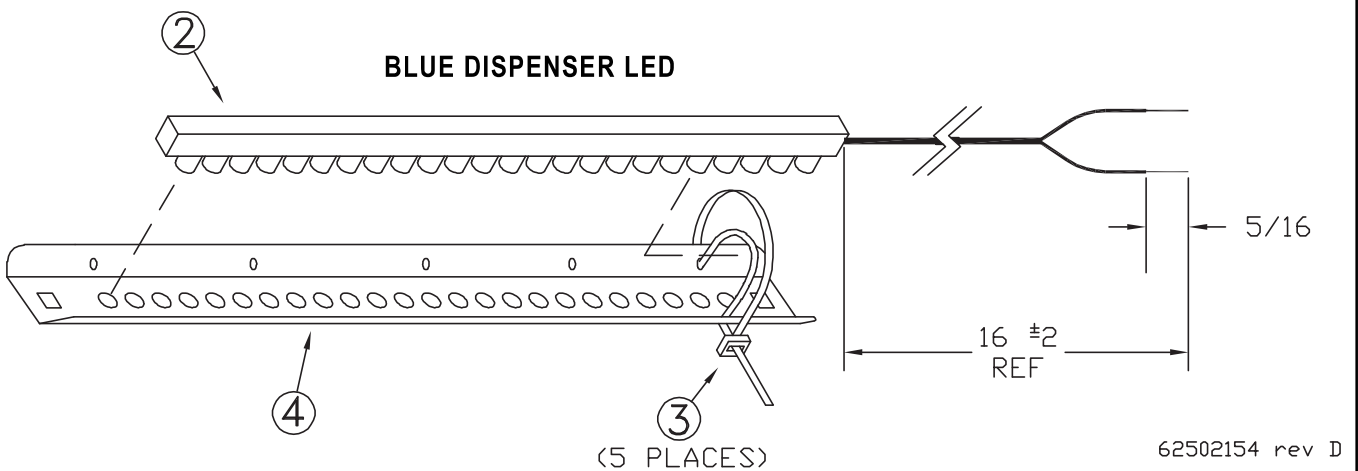
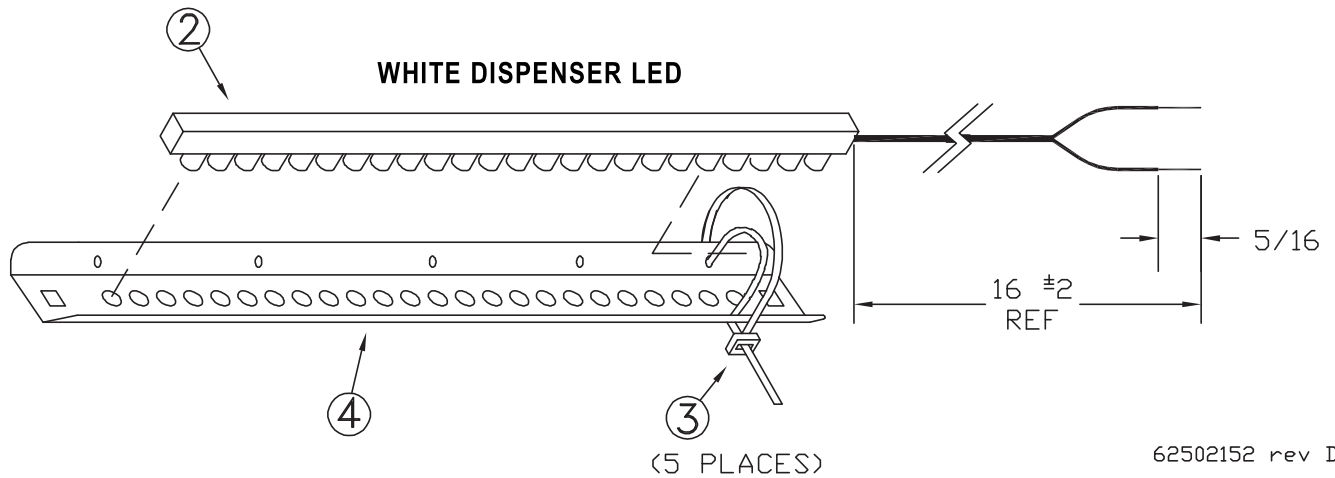
REF. NO.	PART NUMBER	DESCRIPTION	REF. NO.	PART NUMBER	DESCRIPTION
1	62501652	Valve, 1/2 Ball	5	62500859	UV Light (5 GPM R-CAN) Assembly
2	625-004-329	Dual Check	5*	62500854	Bulb, UV S463RL, R-CAN
3	62500658	Water Meter Machined (Gallon)	5*	62500855	Quartz Sleeve
3	62500790	Water Meter Machined (Metric)	6	62501818	Nozzle 1/2 SS
4	625-001-560	Filter Housing 10"	S-2*	62501392	Valve, Plastic W/Screen & Flow Control
4*	625-001-574	Filter, Carbon 10"	PS-3*	62502593	Switch, Pressure SPDT

\* Recommended Spare Parts \*\* Additional Recommended Spare Parts



REF. NO.	PART NUMBER	DESCRIPTION	QTY.	REF. NO.	PART NUMBER	DESCRIPTION	QTY.
1	62502525	Assembly, Dual Electrical Box	1	25	62502962	Terminal, Spade #10 16-14 Ga.	2
2	625-004-068	GFCI Reciptical, 125 15 Amp	1	26	62500702	Terminal, 1/4 F Ful Insulated 22-18	3
3	625-004-252	Receptical, 15 Amp 110 Brn Grd	3	27	62502534	Decal, Dual Vend Operation	1
4	62502518	Module, 24 VDC Power Supply	1	28	954-002-010	Rivet 1/8 x 1/8 SS	3
5	62502522	PLC, 8/6 I/O W/Dual Program	1	29	62500156	Clamp, 3/4 Self Adhesive	4
6	62502523	Module, 16 Input 24 VDC	1	30	62502536	Bracket, Calibrate Switch	1
7	62502537	Label, Run / Cal	1	31	62500634	Fuse, 5A 3Ag 250V Fast Acting	2
8	950-005-006	Self Tapping #8-36 x 3/8 Shw Head	6	32	62500635	Fuse, Metal Clip 3Ag	1
9	625-004-073	Seal, Knockout 3/4 Steel	1	33	62502963	Terminal, Spade #10, 22-18 Ga.	2
10	952-004-068	Washer .2 x .44 SS	1	34	62501400	Fuse, 1A 2Ag Fast	1
11	62502780	Switch, Spst, Red Push Button	2	35	950-004-024	Machine Screw #6-32 x 3/8 Slotted Pan Head	5
12	39207034	Fuse Holder, 3Ag 1/4" Q-Conn.	1	36	625-002-075	Decal, Warning Elect	1
13	625-001-265	Term Block, 12 Pole, High Barri	1	37	N/A	N/A	N/A
14	625-004-051	Jumper, Snap Off Strip Style	3	38	N/A	N/A	N/A
15	625-900-334	Din Rail, Electrical Box	1	39	N/A	N/A	N/A
16	62502526	Switch, Rocker Spst	2	40	N/A	N/A	N/A
17	625-001-266	Term Block, Ground Lug Al 4-14 Wire	2	41	625-004-189	Plug BPF 1/2 Black Plastic	1
18	951-001-002	Nut-Hex #10-24	1	42	62502944	Label, Upper Outlet	1
19	950-004-086	Machine Screw #8-32 X 5/8	2	43	62502964	Terminal, Spade #10 10-12 Ga.	2
20	951-001-012	Nut-Hex #8-32	2	44	62502972	Connector IDC 18-14 AWG	1
21	39207032	Varistor, Surge Absorber 6500A	1	45	62502133	Connector T-Tap 22-18 Ga.	1
22	625-001-312	Fitting Elec, Romex Connect 3/4	1	46	62501603	Switch, Main Power Toggle DPST 1/4 F	1
23	62501684	Suppressor, 200V Tvs 1500W	1	47	625-002-278	Terminal, 1/4F 14-16 AWG Full Insulation	2
24	62500631	Terminal, 3/16 F Sdrl 22/18	6				

\* Recommended Spare Parts \*\* Additional Recommended Spare Parts



REF. NO.	PART NUMBER	DESCRIPTION	QTY.	REF. NO.	PART NUMBER	DESCRIPTION	QTY.
1	N/A	N/A	N/A	3	625-001-469	Tie Wrap, Nylon	5
2	62502071	Blue LED Strip 9.5"	1	4	62502073	Bracket, Dispenser Light LED	1
	62502070	White LED Strip 9.5"	2	5	62502072	Bracket, Selection Button LED	1