

SERVICE PARTS

It is the policy of Coster Engineering to constantly improve its products whenever it is practical to do so.

Coster Engineering must therefore reserve the right to redesign or change its equipment or component parts thereof without incurring the obligation to install or furnish such changes on equipment previously delivered.

INSTRUCTIONS FOR ORDERING PARTS

1. The reference numbers in the illustrations correspond to the numbers shown in the "Reference Number" column in the parts listing. The quantity in the "number required" column is the number of parts used in the accompanying illustration. The term "A/R" for number required indicates "as required" where the quantity may vary. Order all parts by their part number and description.
2. Always mention the identification number of the code and serial numbers found on the name plate of the unit on which the part is to be used. Much delay and confusion can be avoided when correct numbers are specified on parts order and correspondence.
3. Owner, order all parts through your local dealer.
4. Dealers must indicate how to ship; whether by truck, rail freight, express, or parcel post.
5. Collect phone calls are not accepted.
6. Address all orders for parts as follows:

COSTER ENGINEERING
217 E PLUM STREET
MANKATO, MN 56001
PH (844) 975-1100
FAX (507) 549-1101
costerwater.com

INSTRUCTIONS FOR RETURNING PARTS FOR ADJUSTMENT

1. To assure prompt handling of claims, your dealers should follow standard claim and forward claim procedures within thirty (30) days, of any part failure or malfunction believed to be a warranty claim.
2. No returned part will be accepted unless they are transportation prepaid and accompanied by the packing list, copy of the returned goods authorization form, or the packing list copy of the warranty claim form.
3. Parts returned should have a tag attached with sender's name and address clearly printed.

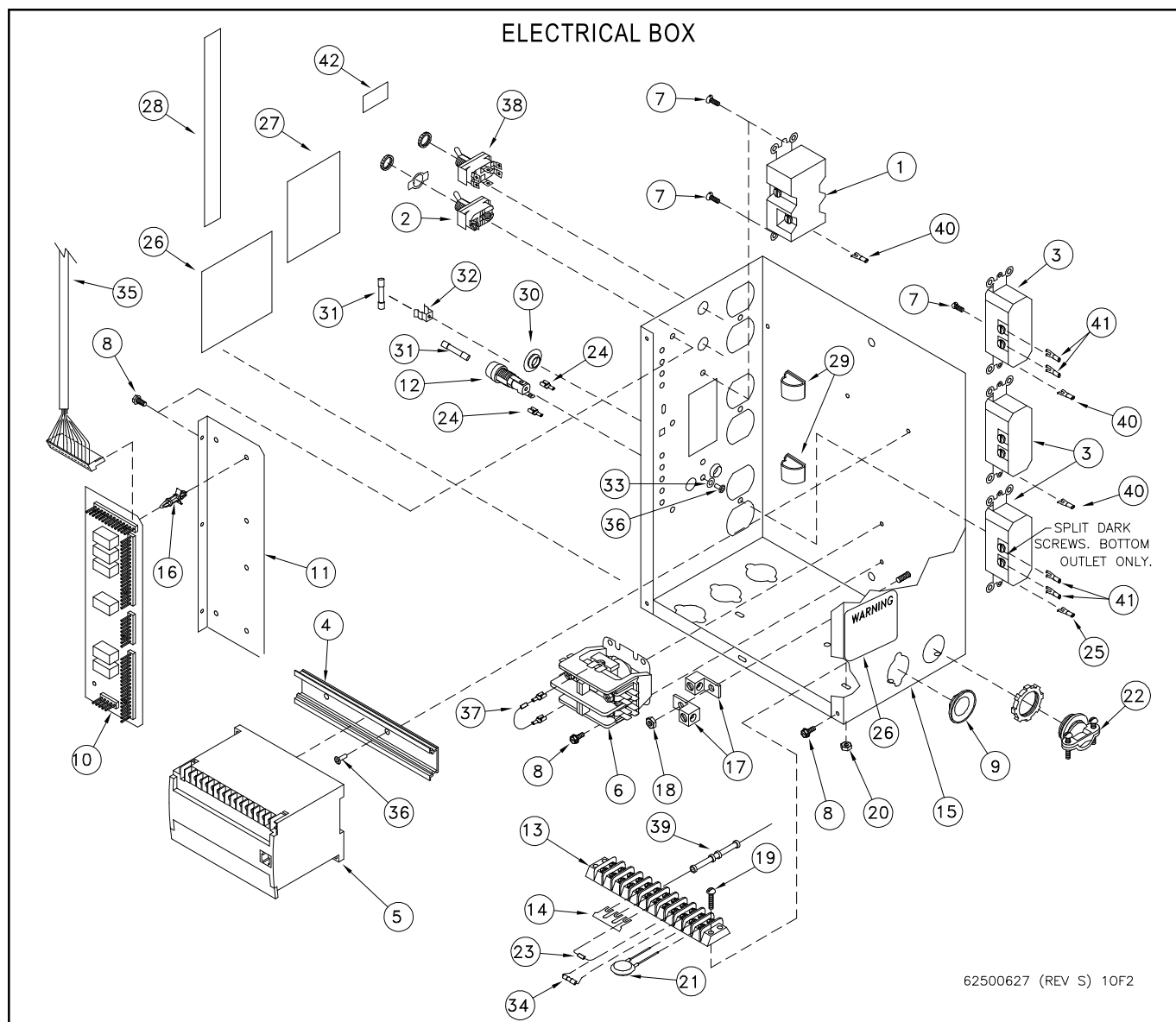
DISCLAIMER

This supplement contains additional information that is specific to units. It is used in conjunction with the basic machine operator's manual which includes safety and operational information.

Retain all manuals for future reference. Read all and understand all manuals in their entirety before operation or service.

The information contained in this manual is subject to change without notice.

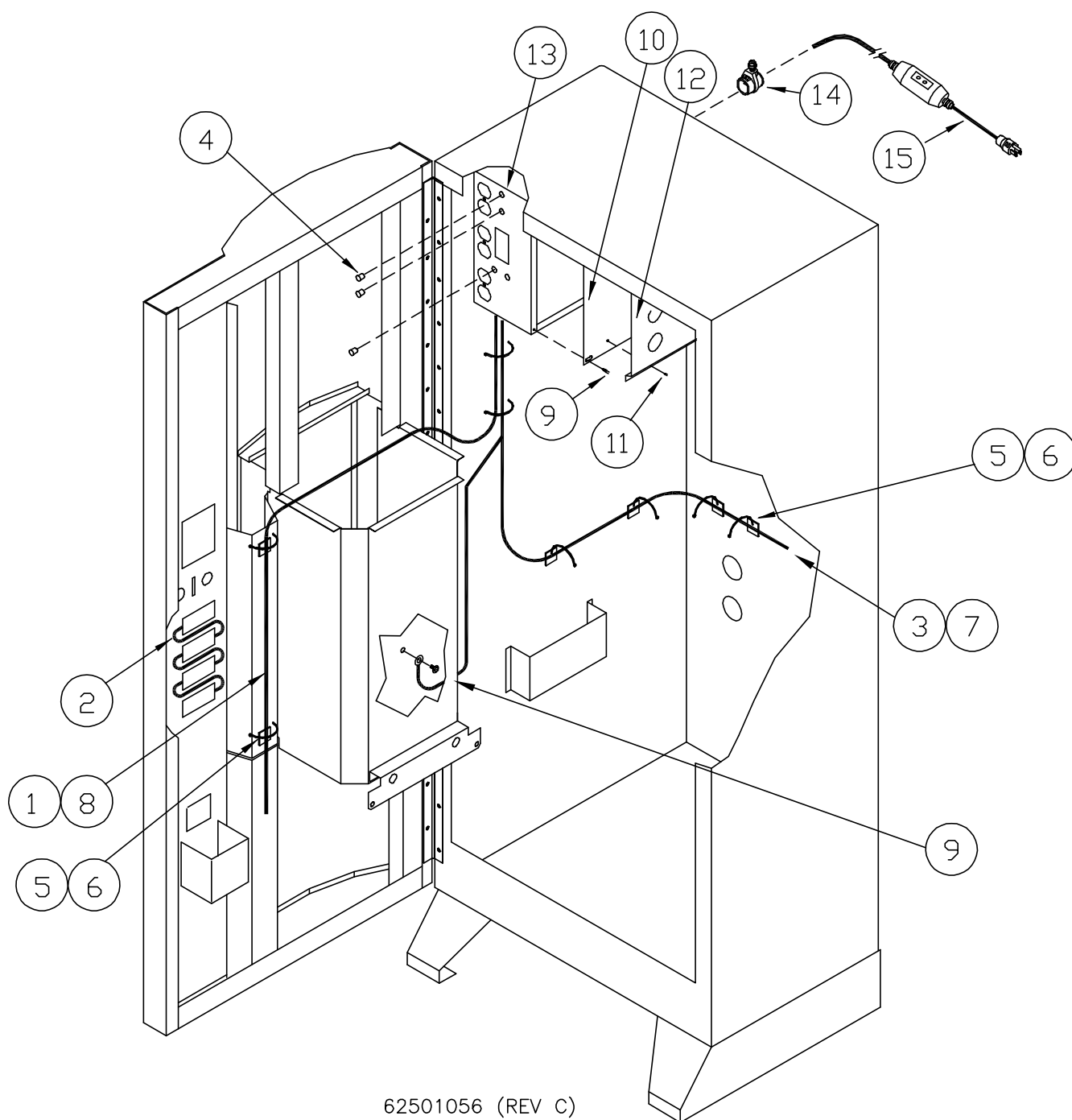
Coster Engineering shall not be liable for technical or editorial omissions made herein; nor for incidental or consequential damages resulting from the furnishing, performance, or use of this material.



REF. NO.	PART NUMBER	DESCRIPTION	QTY.	REF. NO.	PART NUMBER	DESCRIPTION	QTY.
1	625-004-068	Receptical, 125 15 AMP	1	23*	62501684	Suppressor, TVS	1
2	N/A	N/A	N/A		62501414	Kit Includes Items 23 & 34	1
3	625-004-252	Receptical, 15 AMP 110 BRN GRD	3	24	62500631	Terminal, 3/16 F SDRL 22/18	2
4	625-900-334	Bin Rail, Electrical Box	1	25	62502962	Terminal, Spade #10	1
5**	62501824	Kit, PLC With Fuse, TVS	1	26	62502954	Decal, Warning Electrocutation	2
6	N/A	N/A	N/A	27	62500632	Decal, Fuse-Pump	1
7	950-004-024	Mach-Scr #6-32x3/8 SL Pan HD	5	28	62500633	Decal, CB Led Display	1
8	950-005-006	S-Tap Scr #8-36x3/8 SHW HD	7	29	62500156	Clamp, 3/4 Self Adhesive	2
9	625-004-073	Seal, Knockout 3/4 Steel	1	30	625-004-189	Plug, BPF-1/2 BLK Plastic	1
10**	36120000	Circuit Board, Vend	1	31*	62500634	Fuse, 5A 3AG 250V Fast Acting	2
11	62500612	Brk, Board Mount	1	32	62500635	Fuse, Metal Clip 3AG	1
12	39207034	Fuse Holder, 3AG 1/4" Q-Conn.	1	33	952-004-068	Washer, .2 x .44 SS	1
13	625-001-265	Term Block, 12 Pole, High Barrir	1	34*	62501400	Fuse, 1A 2AG Fast	1
14	625-004-051	Jumper, Snap Off Strip Style	3	35	62500611	Harness, Wire ECB/PLC	1
15	62500624	Weldment, CB Electrical Box	1	36	954-002-010	Rivet 1/8 x 1/8 SS	3
16	39200010	Standoff, Circuit Board	6	37	N/A	N/A	N/A
17	625-001-266	Term Block, GND Lug AL 4-14 Wire	2	38	N/A	N/A	N/A
18	951-001-002	Nut-Hex #10-24	1	39	N/A	N/A	N/A
19	950-004-086	Mach-Screw #8-32 x 5/8 PH PN HD	2	40	62502964	Spade, #10 Yellow	3
20	951-001-012	Nut-Hex #8-32	2	41	62502953	Spade, #10 22-18 Ga.	4
21	39207032	Varistor, Surge Absorber 6500A	1	42	62502944	Label Upper Outlet	1
22	625-001-312	Fitting Elec, Romex Connect 3/4	1				

* Recommended Spare Parts ** Additional Recommended Spare Parts

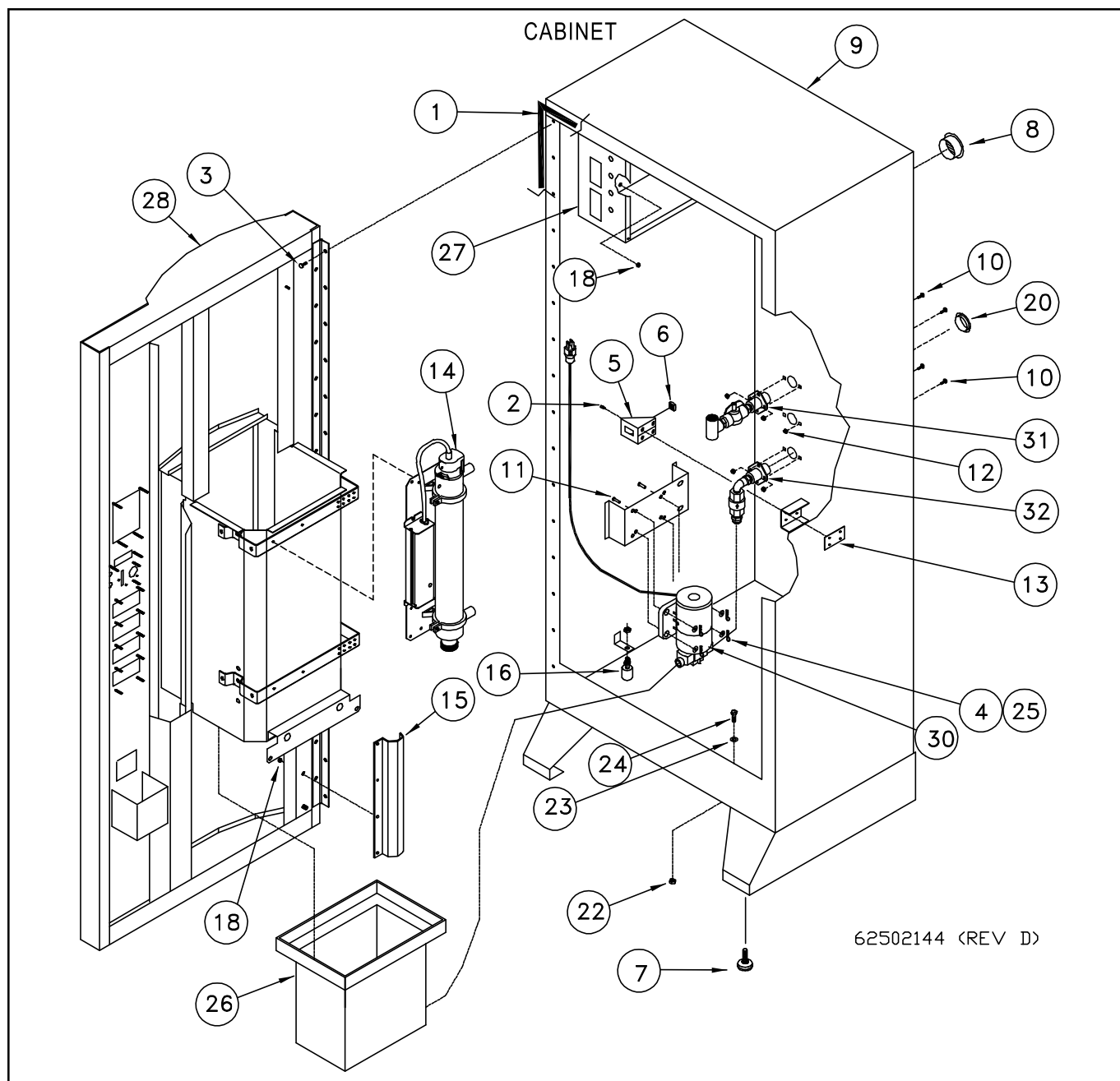
ELECTRICAL SECTION



62501056 (REV C)

REF. NO.	PART NUMBER	DESCRIPTION	QTY.	REF. NO.	PART NUMBER	DESCRIPTION	QTY.
1	62500697	24V 4-Sel Wire Harness	1	9	950-005-006	#8 Self Tapping Screw	4
2	62500868	Jumper Wire	3	10	625-900-333	Cover Electrical Box	1
3	62501052	120V Wire Harness	1	11	954-002-010	1/8" Pop Rivet	4
4	625-004-189	Plug 1/2 Black Plastic	3	12	625-900-774	Bracket Literature	1
5	625-001-469	Wire Tie	12	13	62500627	Electrical Box Assembly	1
6	625-002-305	BASE WIRE TIE	6	14	62500498	Strain Relief	1
7	N/A	N/A	N/A	15	62502175	GFCI Inline Corded Plug	1
8	N/A	N/A	N/A				

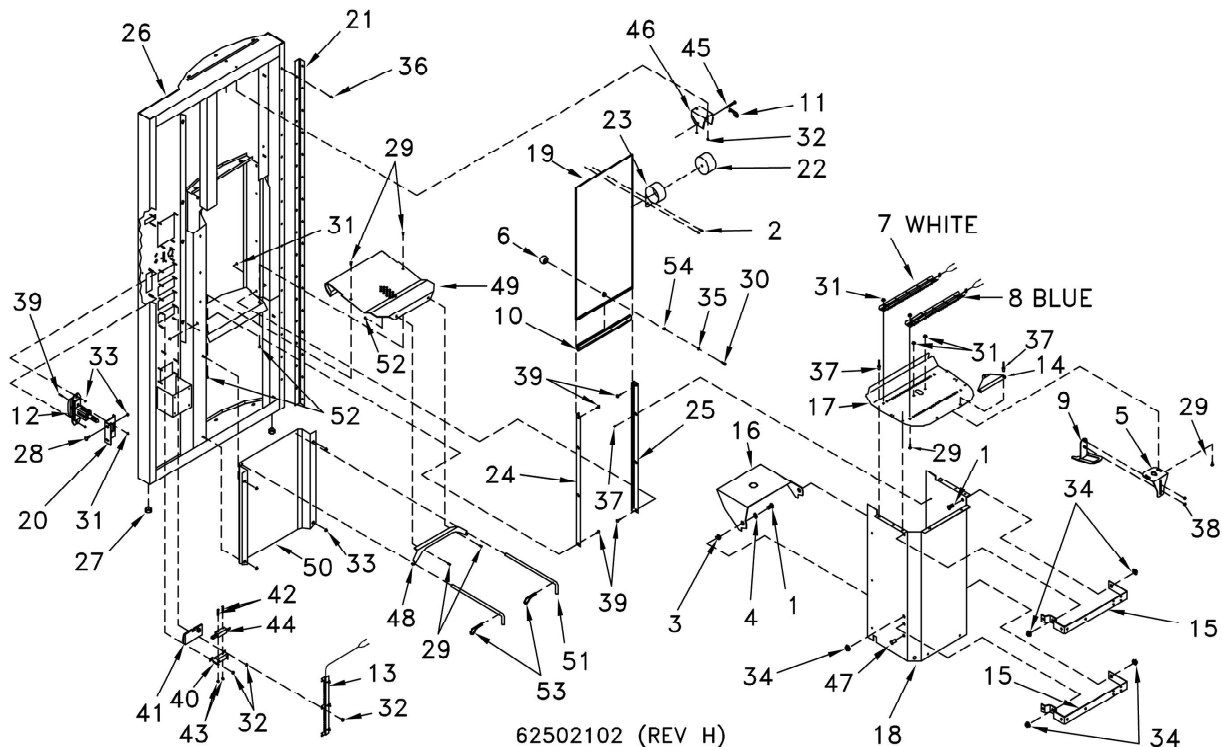
* Recommended Spare Parts ** Additional Recommended Spare Parts



REF. NO.	PART NUMBER	DESCRIPTION	QTY.	REF. NO.	PART NUMBER	DESCRIPTION	QTY.
1	921-001-041	Weather Strip 5/8 x 3/8	16	17	N/A	N/A	N/A
2	060905	Self Tapping Screw #10-24 x 1/2 SHW Head	4	18	951-002-001	Flanged Whiz Lock Nut 1/4-20	4
3	954-002-007	Rivot-Pop, 1/4 x 1/4 SS OEDH	16	19	N/A	N/A	N/A
4	953-005-004	Cotter Pin	4	20	625-004-325	Plug, 1 1/8 Plastic	1
5	625-001-070	Vend Part, Bracket	1	21	N/A	N/A	N/A
6	625-001-075	Vending Part, Nut 1/2-13	1	22	061910	Nut 3/8-16 SS	2
7	625-001-950	Leg, 3/8-16 Rubber Leveler	4	23	625-001-509	O-Ring	2
8	625-001-965	Vent, 2" Dia Aluminum Louvered	4	24	031-09103	Hex Head Cap Screw 3/8 x 3/4 SS	2
9	62501310	Cabinet, Weldment Full Size	1	25	952-004-068	#10 Washer SS	4
9	62500824	Cabinet, Weldment In Isle	1	26	62500595	CB Drain Bucket	1
10	950-003-071	Carriage Bolt #10 x 1/2 SS	6	27	62500627	Electrical Box Assembly	1
11	953-002-050	Clevis Pin, 3/16 x 1	4	28	62502101	Door Weldment	1
12	951-002-012	Hex Nut #10-24 Whiz Lock	6	29	N/A	N/A	N/A
13	625-901-099	Plate, Door Latch	1	30	625-900-510	Assembly, Drain Pump	1
14	62500859	U.V. Assembly	1	31	N/A	N/A	N/A
15	62501092	Bracket, Door Stop	1	32	62501965	Assembly, Drain Line	1
16*	625-001-325	Level Switch, N/C Float & Stem	1				

* Recommended Spare Parts ** Additional Recommended Spare Parts

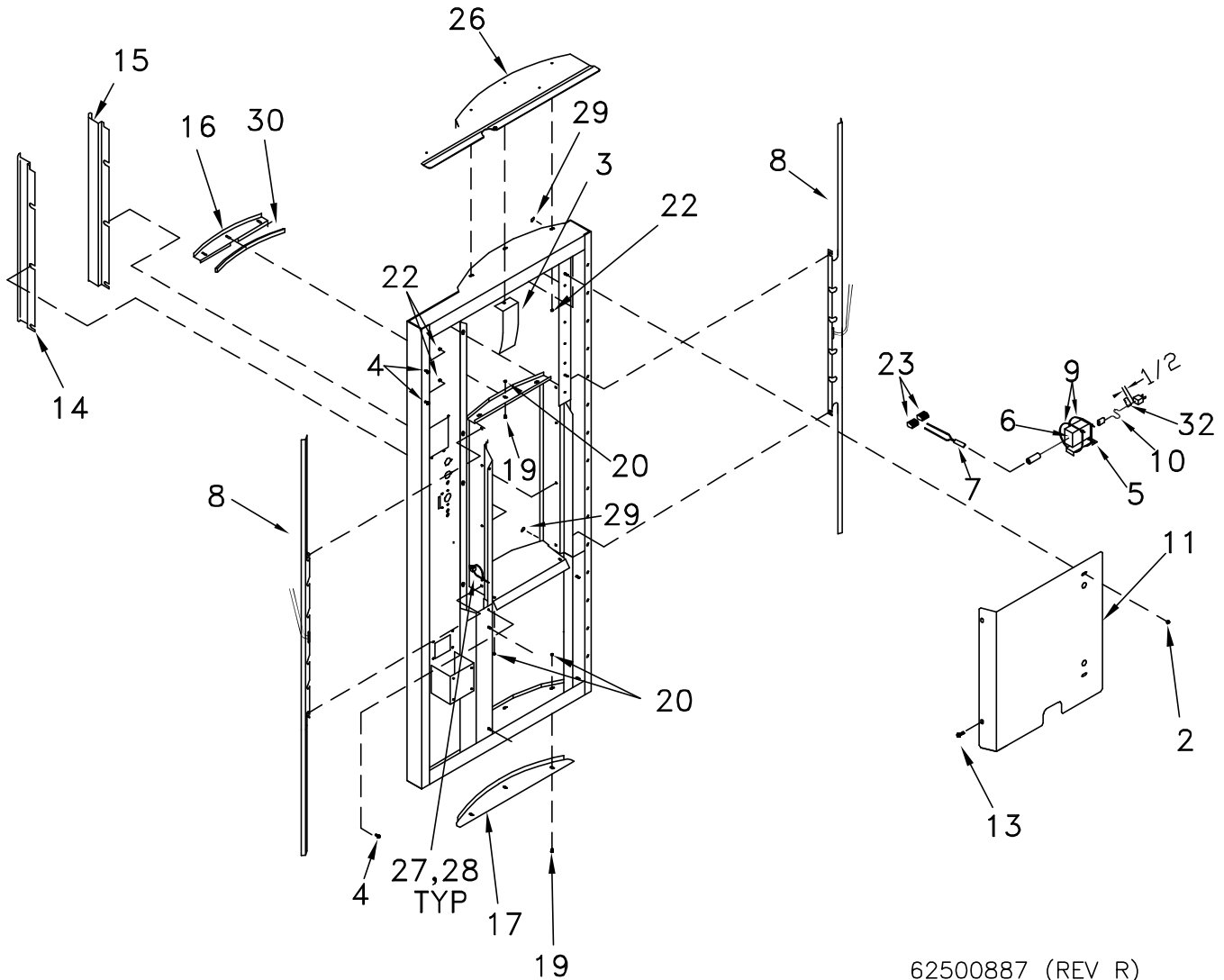
DOOR, WIDE DISPENSER VMC



REF. NO.	PART NUMBER	DESCRIPTION	QTY.	REF. NO.	PART NUMBER	DESCRIPTION	QTY.
1	950-011-063	Button Head Screw 3/8-16 x 3/4 SS	6	28	950-003-065	Carriage Bolt 1/4-20 x 5/8 Gr. 5	2
2	950-005-031	Self Tap Screw #6 x 1/4 Type B	2	29	950-003-071	Carriage Bolt #10-24 x 1/2 SS	10
3	061910	Hex Nut 3/8-16 SS	4	30	950-004-121	Socket Head Cap Screw 1/4- SS	1
4	061916	3/8 Flat Washer SS	2	31	951-002-012	Hex Nut #10-24 Whiz Lock	12
5	62501122	Bracket, Upper Guide	1	32	951-001-012	Nut-Hex #8-32	15
6	62503137	Knob, Black Plastic	1	33	951-002-001	Flanged Whiz Lock Nut 1/4-20	8
7	62502152	Sec. LED White Light	1	34	951-002-003	Lock Nut 2 Hex Whiz 3/8-16	6
8	62502154	Sec. LED Blue Light	1	35	952-004-086	Flat Washer 9/32 x 1	2
9	62501121	Bracket, Lower Guide	1	36	954-002-007	Rivet-Pop 1/4 x 1/4 S-S Oedh	15
10**	625-004-053	Trim, Edge Guard 3/16"	1.1	37	954-002-013	Pop Rivet 3/16X1/4 Closed End SI	12
11	953-005-004	Cotter Pin	1	38	061605	Nut 1/4-20 SS Nylon Lock	2
12	625-005-166	T-Handle Lock Flush Mount	1	39	950-003-081	Bolt #10 x 3/4 CRG SS	6
13	62502153	Sec. LED Button Light	1	40	62500618	Bracket, Rect. Button Mount	5
14	62502100	Bracket, Water Meter	1	41*	62500617	Rectangular Push Button	4
15	625-900-300	Bracket, UV Light	2	42	700-10904	Machine Screw #6-32 x 1 Slotted Pan Head	8
16	625-900-303	Shelf, Dispenser	1	43	951-001-001	Hex Nut #6-32	8
17	62502099	Panel, Led Dispenser	1	44*	62500615	Switch, Spst, Cherry Micro	4
18	62500878	Housing, S.S., Wide Dispenser	1	45	953-002-039	Clevis Pin, 3/16 X 1-3/4	1
19**	62500883	Door, Wide Dispenser	1	46	62500884	Bracket, Spring Drum	1
20	625-900-957	Bracket, Door Lock Retainer	1	47	62500922	Plug, 3/8 Locking Hole, Black Plastic	2
21	625-901-100	Hinge, Vending Door	1	48	62500140	Bracket, Drain Bucket	1
22	62500886	Drum, C.F. Spring	1	49	62500872	Drain Pan Wide	1
23**	62500885	Spring, 2 Lb Constant Force	1	50	62500185	Shield Lower	1
24	62500890	Track R.H., Wide Disp	1	51	62500349	Pin Drain Bucket	2
25	62500889	Track L.H. Wide Disp	1	52	951-001-002	Nut #10-24 SS	4
26	62502101	Weldment, VMC Door 4 Sel.	1	53	060854	Cotter Pin 1/8 x 3/4	2
27	62500347	Vent 7/8 Dia Plastic	2	54	951-005-104	Jam Nut 5/16-18 SS	1

* Recommended Spare Parts ** Additional Recommended Spare Parts

DOOR, TRIM WIDE DISPENSER

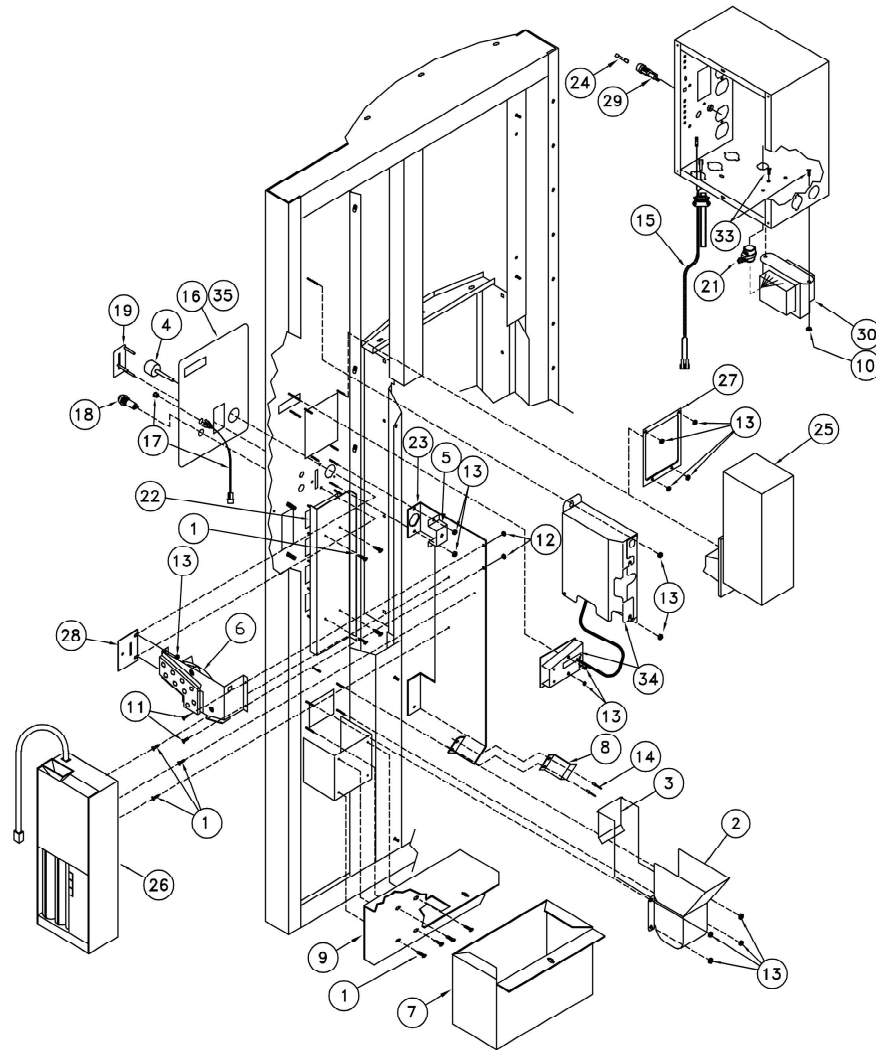


62500887 (REV R)

REF. NO.	PART NUMBER	DESCRIPTION	QTY.	REF. NO.	PART NUMBER	DESCRIPTION	QTY.
1	N/A	N/A	N/A	17	62500321	Weld End Cap	1
2	951-002-001	Whiz Nut 1/4-20	8	18	N/A	N/A	N/A
3	62501139	Bracket, Wide Disp Door Guide	1	19	950-003-071	Carriage Bolt #10-24 x 1/2 SS	6
4	392-010-028	Self-Tap Screw #8-18 x 1/2 Shw Head	3	20	951-001-002	Hex Nut #10-24 SS	6
5	62502951	Bracket, Power Supply	1	21	N/A	N/A	N/A
6	62502950	Power Supply, LED Lights	1	22	951-001-012	Hex Nut #8-32	7
7	62502151	Cable, Power Supply Pigtail	1	23	62502986	Connector, Lever Nut	2
8	62502149	LED Strip Light Assembly	2	24	N/A	N/A	N/A
9	367-001-011	Cable Tie, 14"	1	25	N/A	N/A	N/A
10	62502949	Power Cord, 5 Ft.	1	26	62501333	Wld, Top Door Cover	1
11	62502604	Shield, Upper Curved Door	1	27	625-001-469	Tywrap, 1/6-5/8 Dia 5L	18
12	N/A	N/A	N/A	28	62501582	Wire Tie Down, Push In 1/4"	8
13	950-005-004	Self Tapping Screw 1/4-20 x 1/2	2	29	62501362	Felt, Disc 1/2 x 1/16 Self Stick	12
14	62500869	Trim L.H., Wide Disp.	1	30	921-001-507	Weather Strip, 3/8 x 1/4 D	1
15	62500870	Trim R.H., Wide Disp	1	31	625-002-305	Adhesive Wire Tie Down	1
16	62501740	Trim, Top, Wide Disp.	1	32	62502931	Label, LED Cord	1

* Recommended Spare Parts ** Additional Recommended Spare Parts

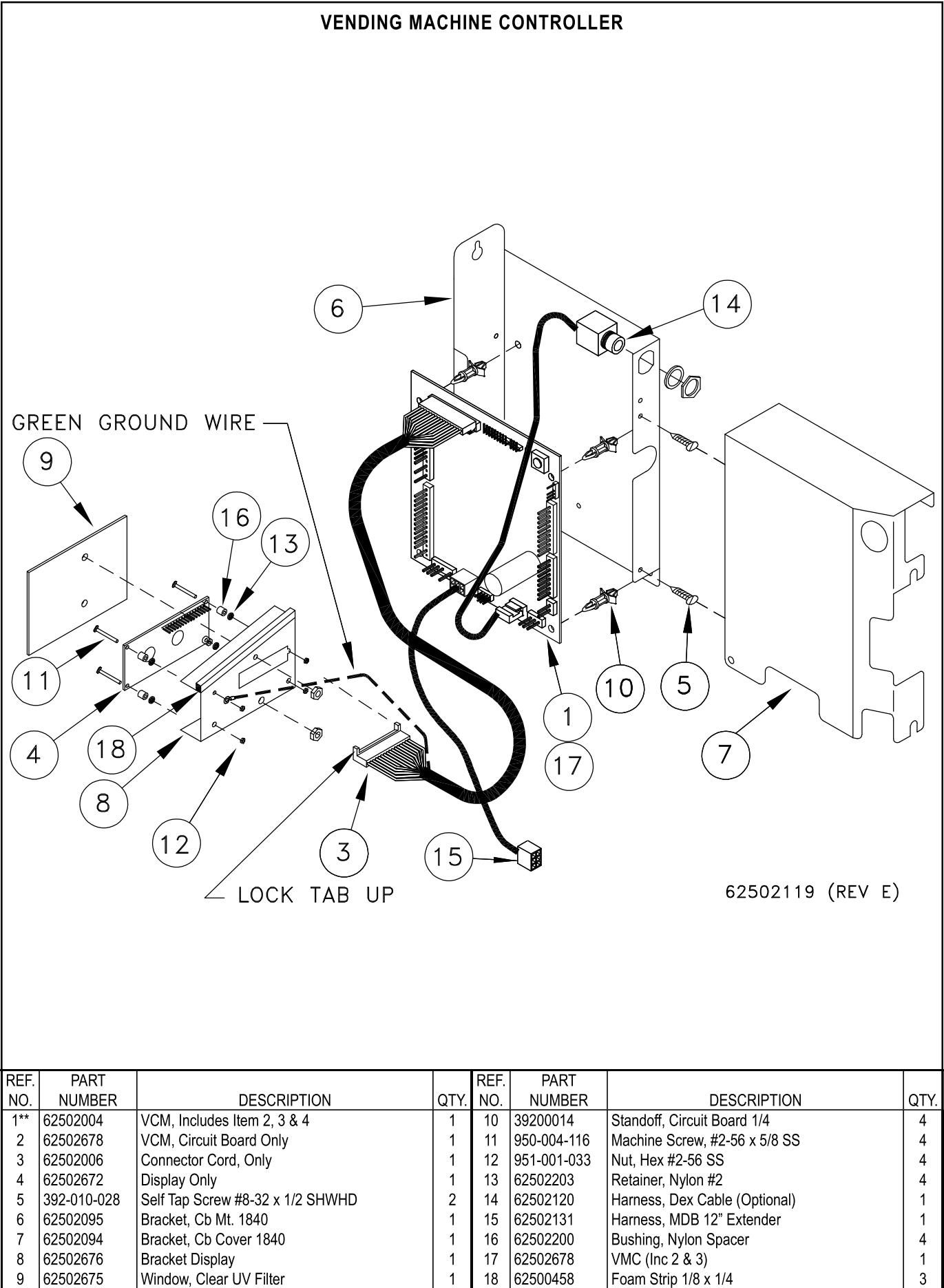
DOOR, COIN MECHANISM ACCESSORIES



62502118 (REV D)

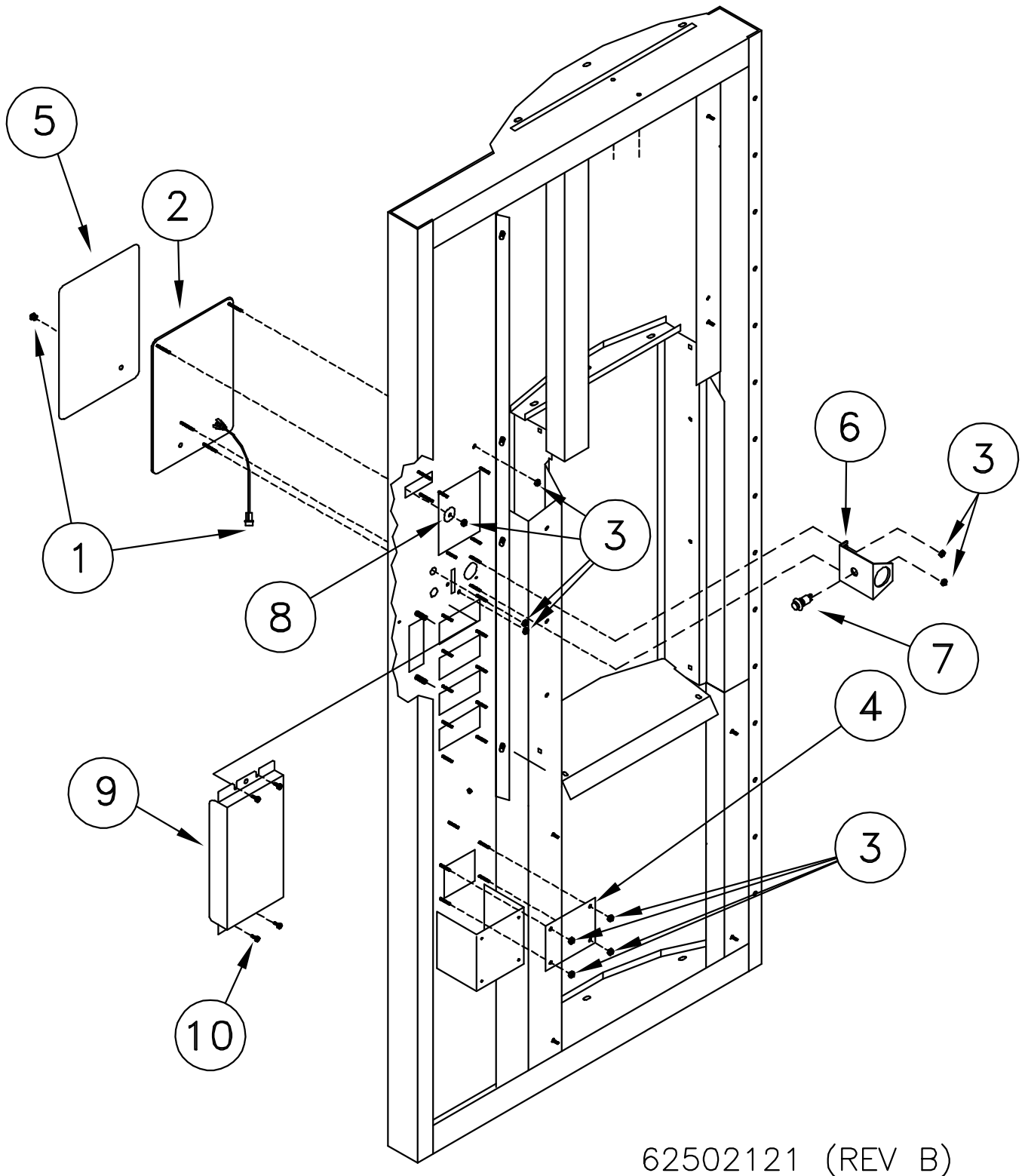
REF. NO.	PART NUMBER	DESCRIPTION	QTY.	REF. NO.	PART NUMBER	DESCRIPTION	QTY.
1	392-010-028	Self Tap Screw #8-18 x 1/2 Shw Head	11	18	62502009	Switch, Spst Red	1
2	62501484	Coin Return, SS (Includes Item 3)	1	19	62500647	Coin Slot Guard	1
3	625-004-766	Coin Return Door SS	1	20	62501931	Bracket Cash Box, In Isle Cabinet	1
4	625-004-768	Button, Coin Return	1	21	62500498	Strain Relief	1
5	625-004-769	Coin Return Bracket Support	1	22	62500652	Guard, Coin Mech.	1
6	62501280	Bracket Assembly Coin Return	1	23	62500653	Bracket, Coin Mech.	1
7	625-900-777	Wld, Large Cash Box	1	24	62500634	Fuse 5A 3Ag	1
8	625-900-900	Chute, Coin	1	25*	62501893	Feature List, Bill Validator	0
9	625-900-936	Bracket Cash Box, Full Size Cabinet	1	26*	62501892	Feature List, Coin Mech	0
10	951-003-011	Hex Lock Nut 8-32	2	27	62500666	Cover, \$ Bill Hole	1
11	950-004-024	Mach Screw, #6 x 3/8 SI Pan Head	2	28	625-901-091	Coin Slot, SS	1
12	951-001-001	Hex Nut 6-32	2	29	39207034	Fuse Holder	1
13	951-001-012	Hex Nut #8-32	18	30	62503149	Transformer, Control 75Va	1
14	954-002-010	Pop Rivet 1/8 x 1/8 SS OEDH	2	31	62500631	Terminal, 3/16 Sdrl	1
15	62502093	Harness, Coin 1840 VMC	1	32	62500691	Terminal, 1/4M 22-18	1
16	62502673	Decal, Instruction Coin VMC 1840	1	33	950-004-032	#8-32 x 1/2 SI Pan Head	2
17	62500642	Light, Red Led	1	34	62502119	1840 VMC Coin Board Assembly (See Page 42)	1

* Recommended Spare Parts ** Additional Recommended Spare Parts

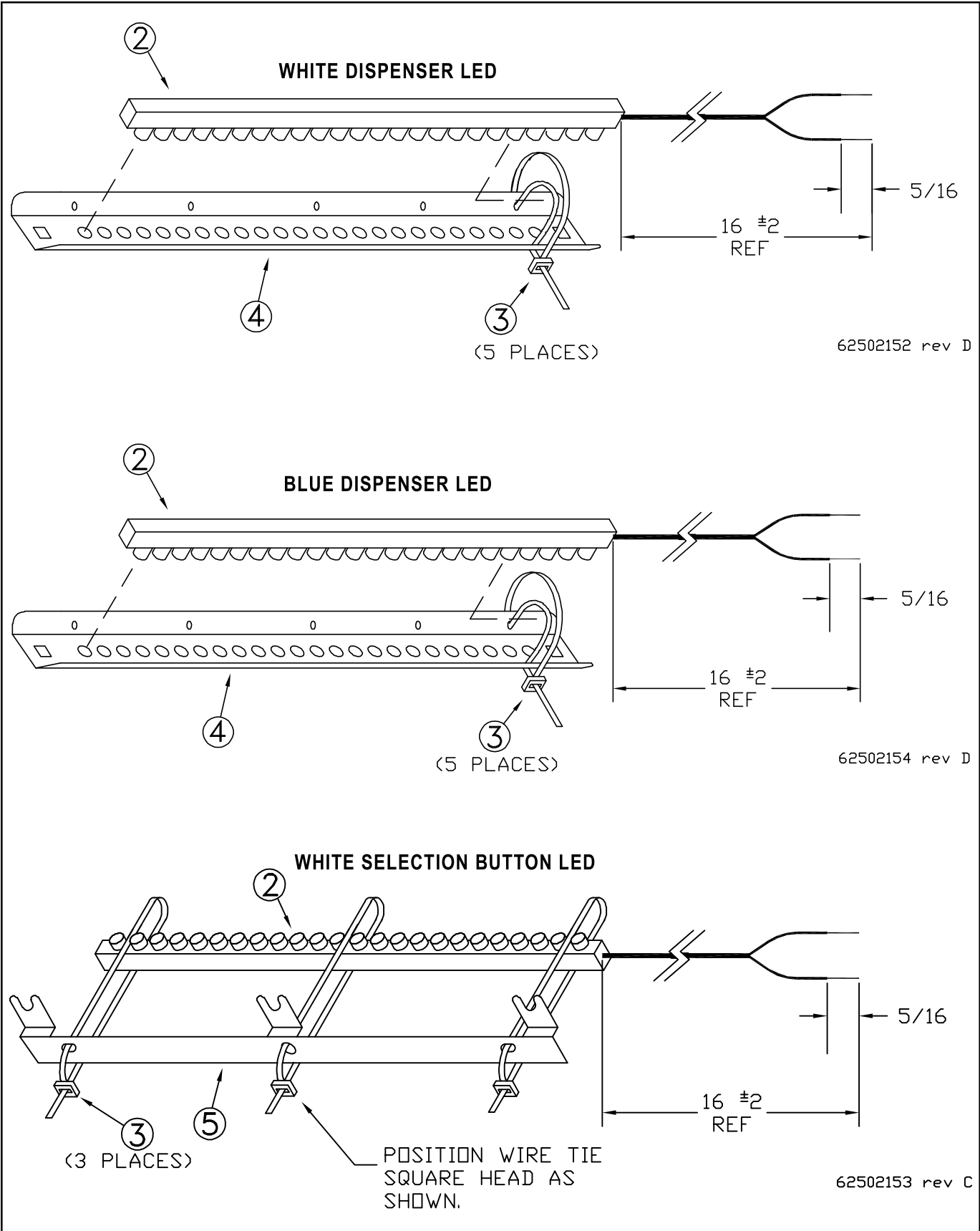


* Recommended Spare Parts ** Additional Recommended Spare Parts

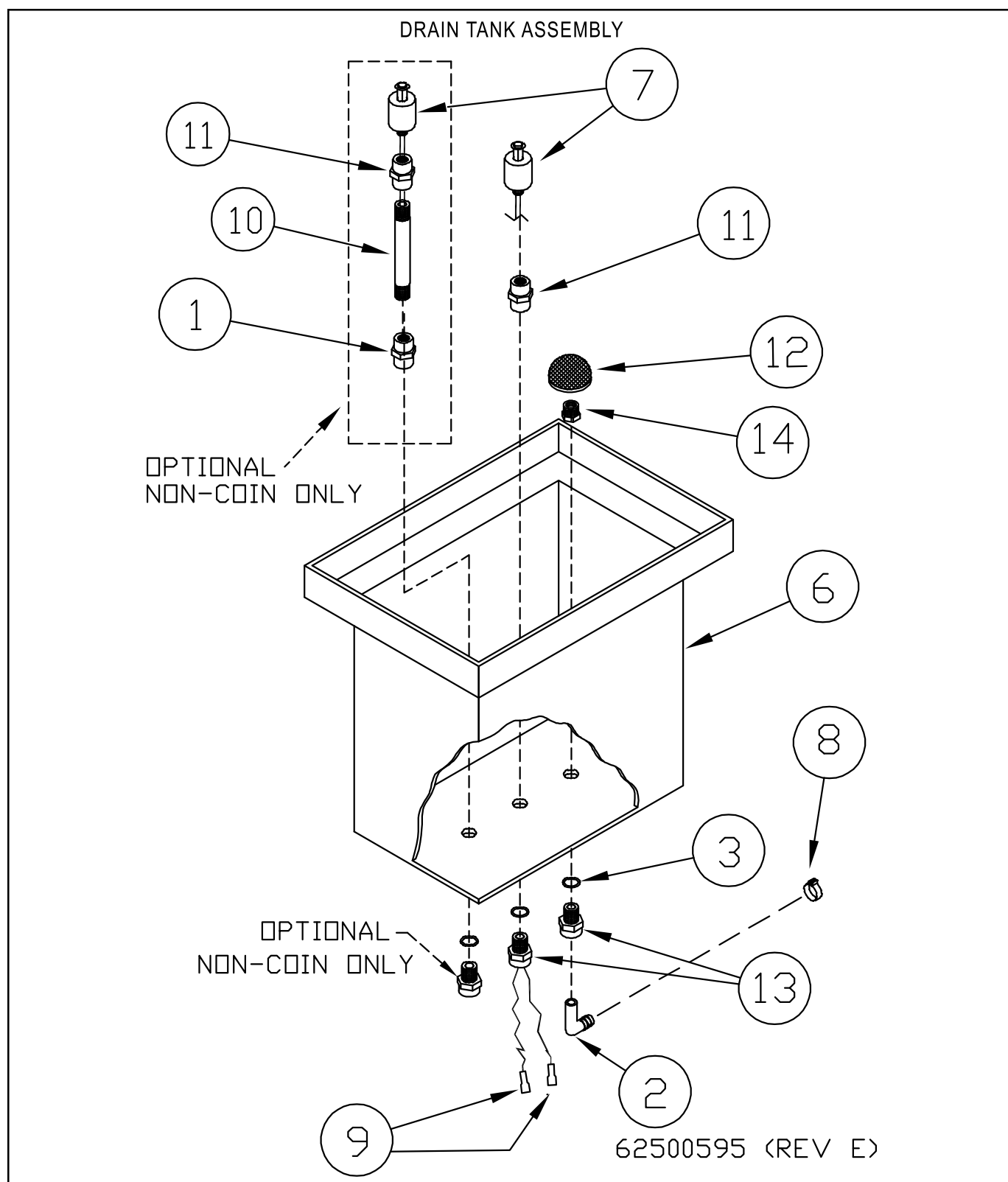
DOOR, NON-COIN MECHANISM ACCESSORIES



REF. NO.	PART NUMBER	DESCRIPTION	QTY.	REF. NO.	PART NUMBER	DESCRIPTION	QTY.
1	62500642	Assembly, Service Light	1	6	62500686	Bracket, Button	1
2	62502097	Cover Plate, Non-Coin VMC Door	1	7	62502009	Switch, SPST Red Push Button	1
3	951-001-012	Hex Nut #8-32	10	8	952-004-066	Washer, .28 ID x 1.25 OD	1
4	62500636	Cover Plate, Coin Return	1	9	62502948	Cover, Push Button	1
5	62502110	Decal, Instructions, 4 Select, N-C, Di	1	10	392-010-028	#8 x 1/2 Self Tapping Screw	4

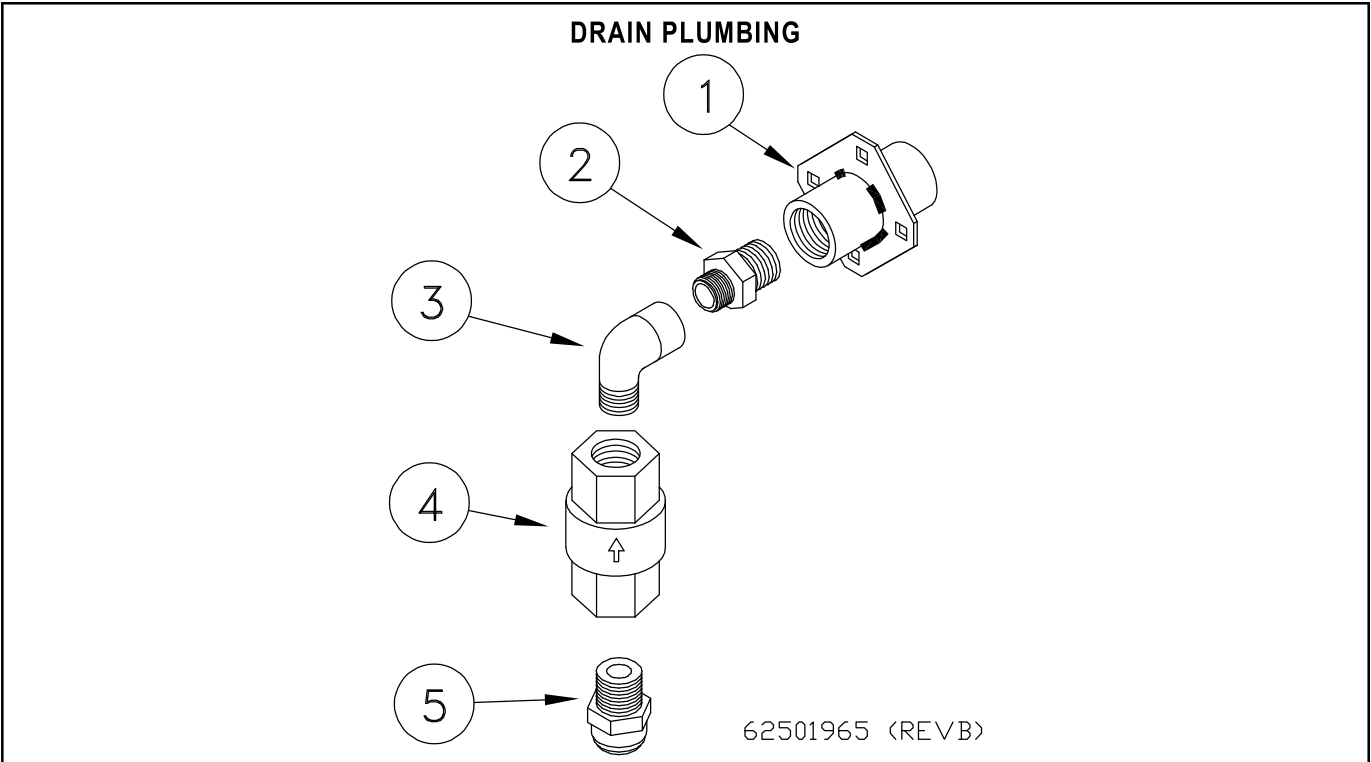


REF. NO.	PART NUMBER	DESCRIPTION	QTY.	REF. NO.	PART NUMBER	DESCRIPTION	QTY.
1	N/A	N/A	N/A	3	625-001-469	TS Wrap, Nylon	5
2	62502071	Blue LED Strip 9.5 "	1	4	62502073	Bracket, Dispenser Light LED	1
2	62502070	White LED Strip 9.5"	2	5	62502072	Bracket, Selection Button LED	1

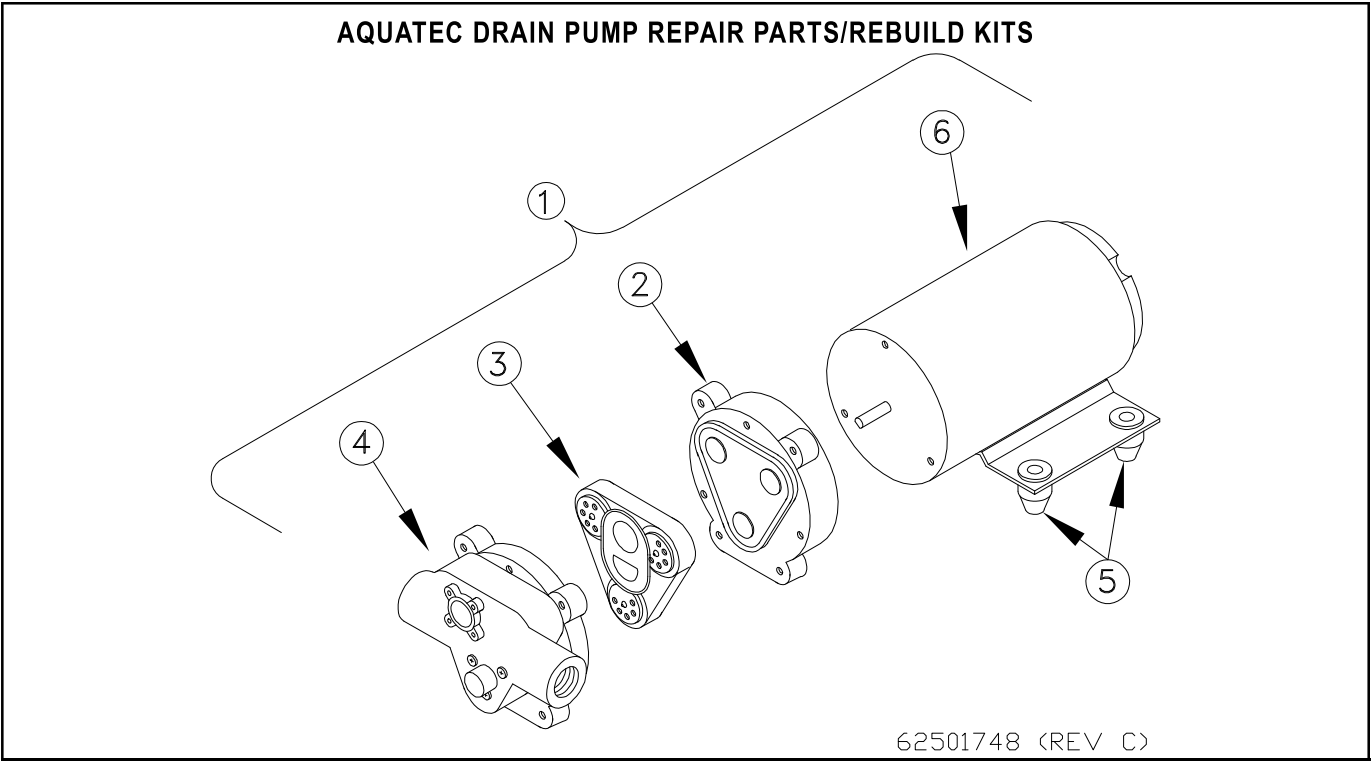


REF. NO.	PART NUMBER	DESCRIPTION	QTY.	REF. NO.	PART NUMBER	DESCRIPTION	QTY.
1	62502747	Fitting, NYLON 1/4 F x 1/4 F	1	8	625-002-875	Hose, Clamp .69 - .59 OD Plastic	1
2	625-005-998	Fitting, 3/8 Stem x 3/8 Barb	1	9	62500691	Terminal, 1/4 M 22-18 Full INS	2
3	625-001-500	O-Ring, 014 70HD Buna-N	2	10	625-001-811	Fitting, PVC SCH 80, Nipple 1/2 x 4	1
4	N/A	N/A	N/A	11	62502748	Fitting, Nylon 1/4 F x 1/8 F	1
5	N/A	N/A	N/A	12	62500984	Strainer	1
6	625-001-121	Tank, Drain 2 Gal (W/O Holes)	1	13	62500493	Fitting, 3/8 Tee x 1/4 MNPT	2
7*	625-001-325	Level Switch, NC	1	14	62500578	Fitting, 3/8 x 1 1/4 RB	1

* Recommended Spare Parts ** Additional Recommended Spare Parts

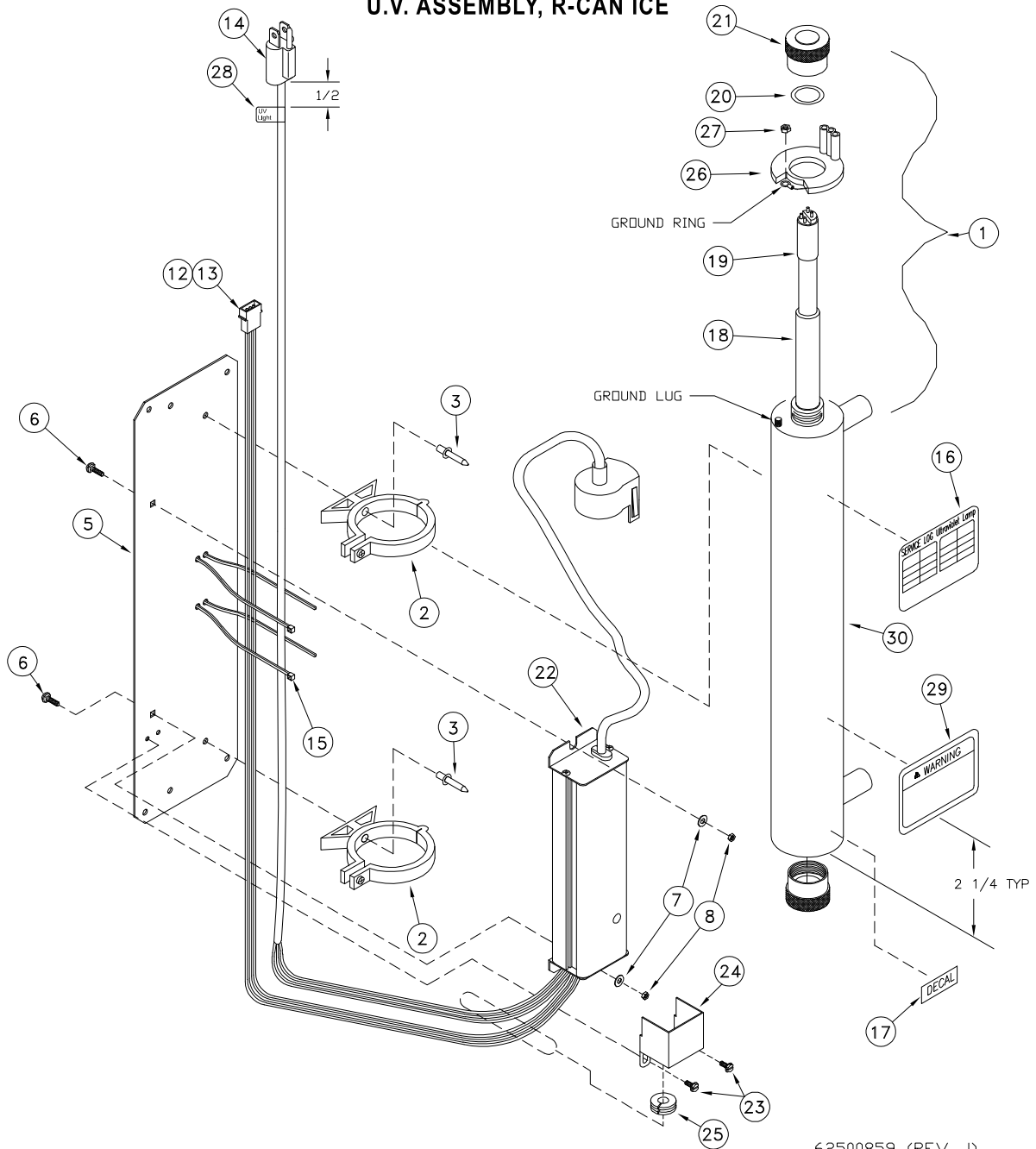


REF. NO.	PART NUMBER	DESCRIPTION	QTY.	REF. NO.	PART NUMBER	DESCRIPTION	QTY.
1	62502608	Ftg, 1/2 Bulkhead 1/2 x 1/2	1	4	62501963	Valve, Check 3/8 FNPT Poly	1
2	62501020	Ftg, Nylon Nipple 3/8 x 1/2	1	5	625-005-949	Ftg, 3/8T x 3/8 MNPT JG	1
3	62501964	Ftg, Nylon 3/8 Street Elbow	1				



REF. NO.	PART NUMBER	DESCRIPTION	QTY.	REF. NO.	PART NUMBER	DESCRIPTION	QTY.
1	62501748	Pump Assembly	1	4	62501761	Kit, Pump Housing Aquatec 5884	1
2	62501763	Kit, Cam Bearing, Aquatec 5884	1	5	62501770	Grommet Isolator (Kit, 4 Pieces)	1
3	62501762	Kit, Check Valve, Aquatec 5884	1	6	62501850	Motor, Electric	1

U.V. ASSEMBLY, R-CAN ICE

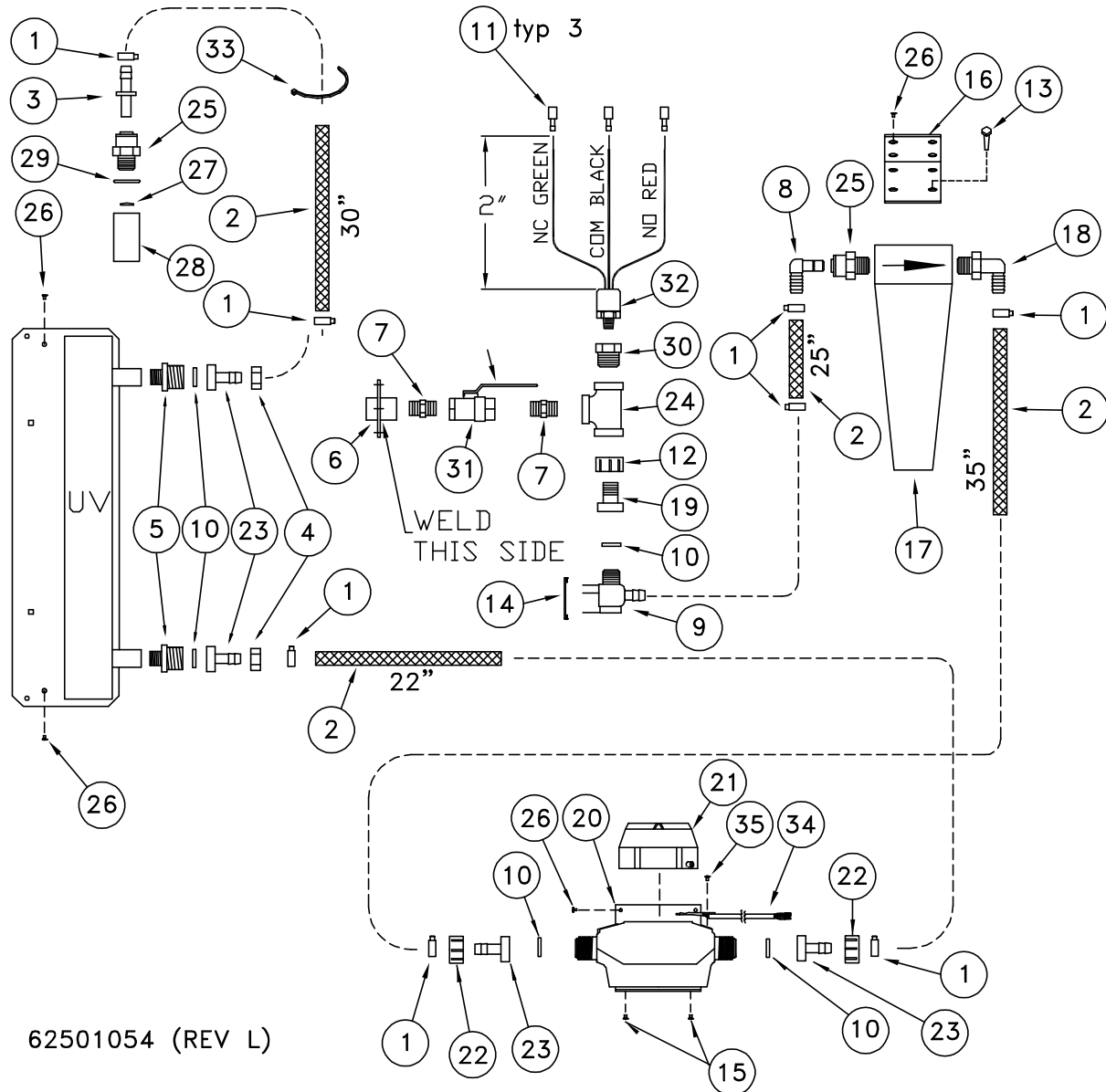


62500859 (REV J)

REF. NO.	PART NUMBER	DESCRIPTION	QTY.	REF. NO.	PART NUMBER	DESCRIPTION	QTY.
1	62502822	Light, U.V. (Includes Items 16, 17, 22 & 29)	1	16	62502938	Decal, Service Log	1
2	N/A	Clip Included W/Item 1	2	17	62500940	Decal, Bulb Replacement	1
3	954-002-003	Pop Rivet 3/16 x 3/8 Stain OEDH	2	18*	62500855	Sleeve, Quartz UV QS-463	1
4	N/A	N/A	N/A	19*	62500854	Light, UV S463RL R-Can	1
5	625-901-072	Bracket 5 GPM Trojan Mount	1	20	62500853	O-Ring, 5 GPM UV OR-212	2
6	950-003-071	Carriage Bolt #10-24 x 1/2 SS	2	21	62500857	Nut, UV AL Gland RN-001	2
7	952-004-062	Washer, 1/4 SS	2	22*	62500856	Ballast Electronic BA-ICE-VI	1
8	951-001-002	Hex Nut #10-24 SS	2	23	061034	Self Tap Screw, 6-32 x 3/16	2
9	625-004-026	Wire Blue	2	24	62501719	Elec Cover, UV Light	1
10	625-004-172	Wire Black	2	25	62501720	Grommet, Rubber 3/5 x 5/8	1
11	625-004-028	Wire Red	2	26		Included With Item 1	1
12	62500641	Pin, 24-18 Awg Mate-N-Lok	3	27		Included With Item 1	1
13	62500682	Housing, 3 Pin Mate-N-Lok	1	28	62502930	Label, U.V Cord	1
14	62500690	Plug, W/18-3 SJT 110 V 59" Cord	1	29	62502939	Decal, Warning (Included With Item 1)	1
15	625-001-469	Tywrap, 1/6-5/8 Dia. 5 L	2	30	62503053	Canister, (Includes Items 16 & 29)	1

* Recommended Spare Parts ** Additional Recommended Spare Parts

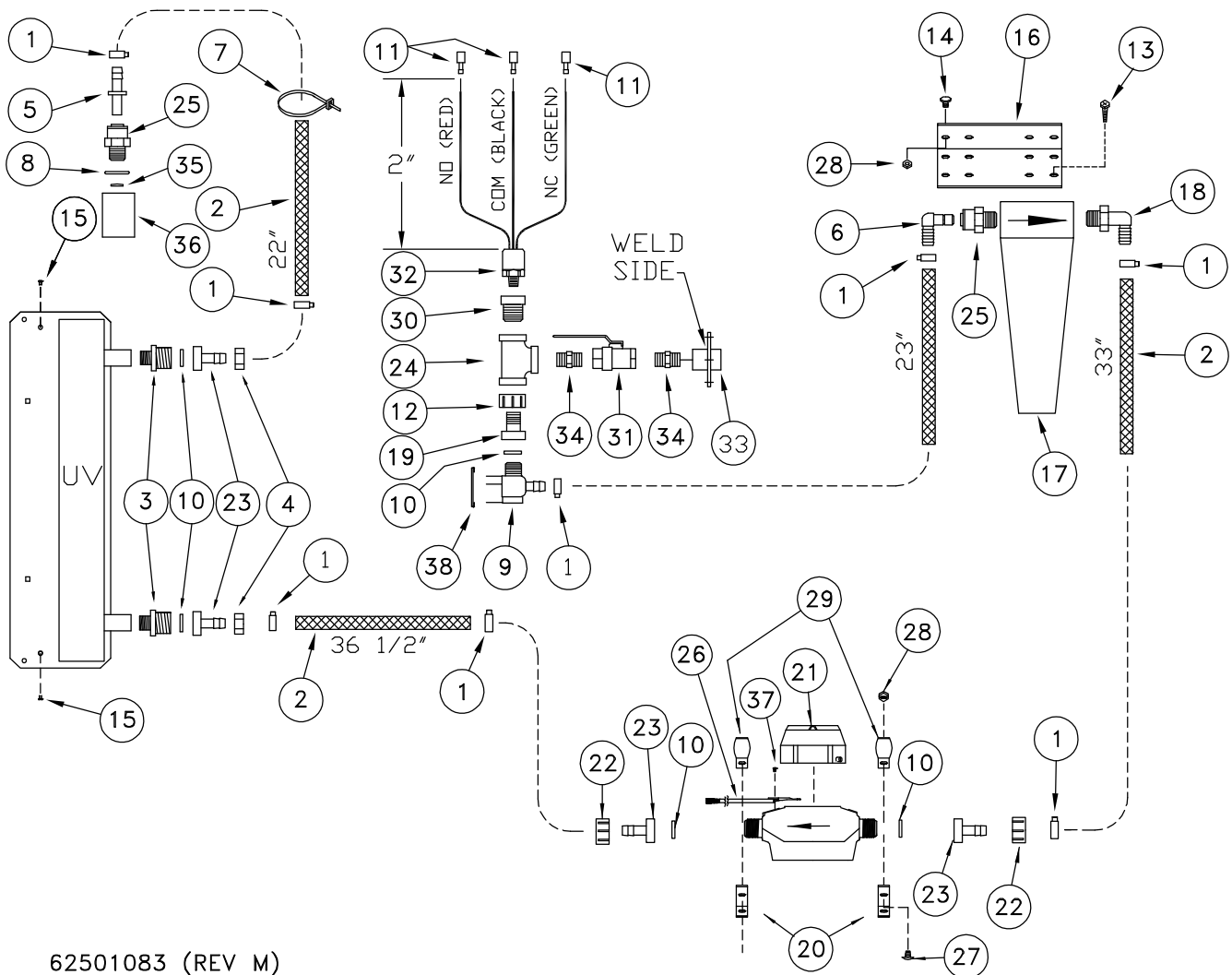
DISPENSER/FEED PLUMBING, IN ISLE CABINET



REF. NO.	PART NUMBER	DESCRIPTION	QTY.	REF. NO.	PART NUMBER	DESCRIPTION	QTY.
1	625-002-881	Hose Clamp, .76 x .89	8	19	62501814	Fitting, Nylon 1/2m Swivel	1
2	625-001-929	1/2 Dia. PVC Braid Hose	9.3	20	62501055	Bracket, Water Meter	1
3	62500522	Fitting, 1/2 Stem x 1/2 Barb, JG	1	21	62500658	Flow Meter, Gallons	1
4	62500443	Fitting, Nylon Nut 3/4 GHT	2	21	62500790	Water Meter Metric (Optional)	1
5	62501793	Fitting, Nylon 3/8 M x 3/4 GHT	2	22	625-002-955	Fitting, Swivel Hex Nut Black 3/4 FPS	2
6	62502608	Fitting, 1/2 Bulkhead	1	23	62500423	Barb-Swivel, 1/2 H	4
7	62501169	Fitting, Nylon 1/2 Nipple	2	24	62502606	Fitting, 1/2 Tee SS	1
8	625-005-993	Fitting, 1/2 Stem x 1/2 Barb 90°	1	25	625-001-672	Fitting, 1/2m x 1/2 T, JG	2
9	62501392	Solenoid Valve, 5 GPM	1	26	950-005-006	Self Tapping #8-32 x 3/8 Hex Head	8
10	625-004-467	Washer, GHT White Rubber	5	27	62501815	Screen 1/2" Nozzle	1
11	62500691	Terminal, 1/4 M	3	28	62501818	Nozzle W/Screen 1/2"	1
12	62501459	Nut Assembly W/Clamp	1	29	39212011	Seal Ring 1/2"	1
13	950-005-020	Self Tapping 10-3/4 Hex	4	30	62502716	Fitting, SS, 1/2 x 1/4 RB	1
14	62500675	Surge Suppressor	1	31	62502596	Valve, Ball 1/2 Brass LF	1
15	950-005-027	Self Tapping Screw 8 x 3/8 Hex Head Type A	4	32	62502593	Press Sw SPDT	1
16	625-900-941	Bracket, Filter	1	33	625-001-469	Tywrap 1/16 Nylon	1
17	62501813	Filter Housing, 1/2"	1	34	62500661	Assembly, Water Meter Sensor	1
18	62500421	Fitting, Nylon 1/2 M x 1/2 Barb	1	35	392-010-019	Self Tapping Screw #6-20 x 3/8 Phillips Pan Head	2

* Recommended Spare Parts ** Additional Recommended Spare Parts

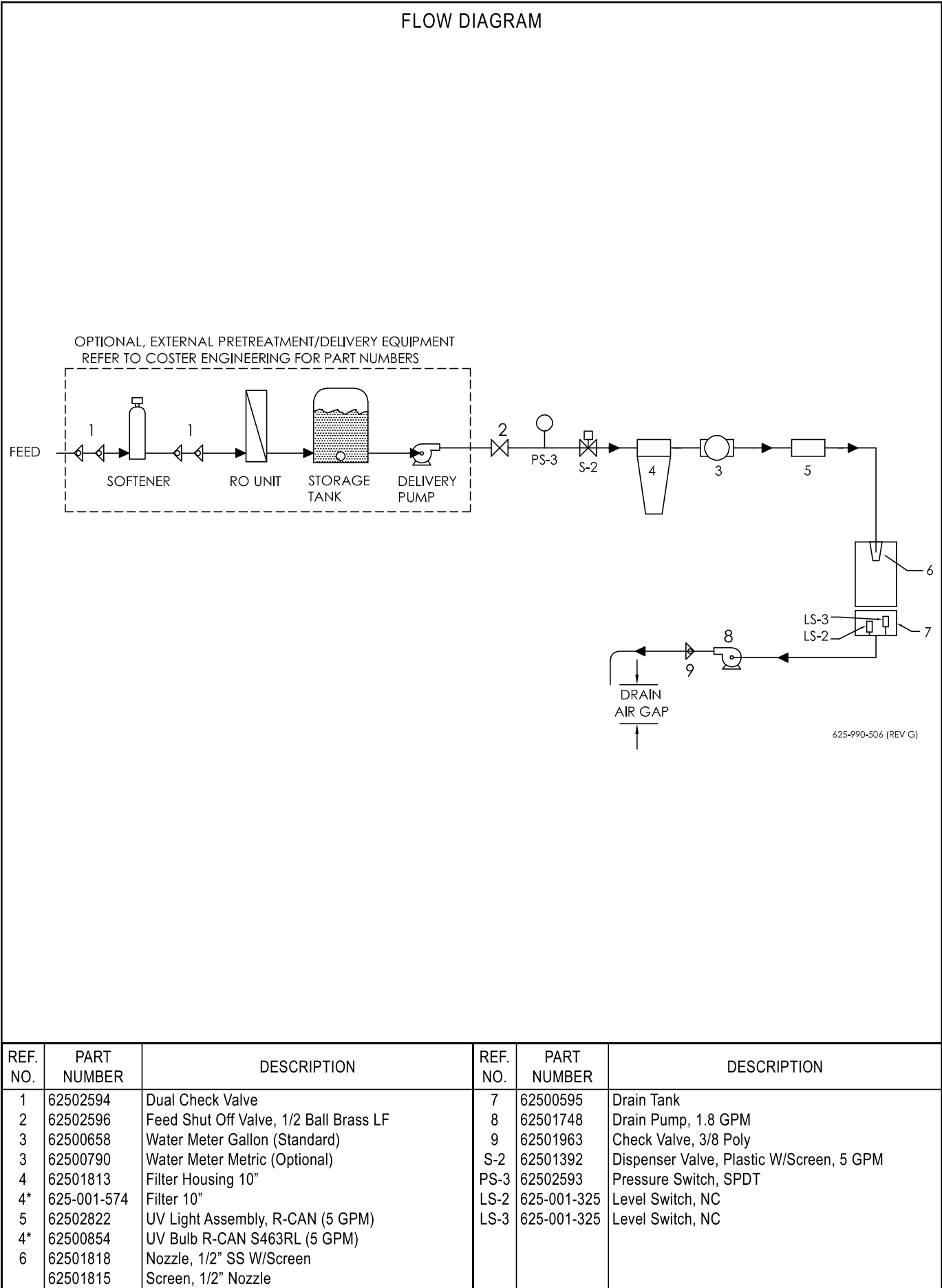
DISPENSER/FEED PLUMBING, FULL SIZE CABINET



62501083 (REV M)

REF. NO.	PART NUMBER	DESCRIPTION	QTY.	REF. NO.	PART NUMBER	DESCRIPTION	QTY.
1	625-002-881	Hose Clamp, .76 x .89	6	21	62500658	Flow Meter, Gallons	1
2	625-001-929	1/2 Dia. PVC Braided. Hose	8.2	21	62500790	Water Meter Metric (Optional)	1
3	62501793	Fitting, Nylon 3/4 Ght x 3/8 MNPT	2	22	625-002-955	Fitting, Swivel Hex Nut Black 3/4 FPS	2
4	62500443	Nut, Nylon 3/4 Ght	2	23	62500423	Barb-Swivel, 1/2 H	4
5	62500522	Fitting, 1/2 Stem X Barb St	1	24	62502606	Fitting, Tee 1/2 SS	1
6	625-005-993	Fitting, 1/2 Stem x 1/2 Barb 90°	1	25	625-001-672	Fitting, 1/2 NPT x 1/2 H	2
7	625-001-469	Nylon Tie Wrap	1	26*	62500661	Sensor, Water Meter	1
8	39212011	Seal Ring 1/2"	1	27	950-001-117	Hex Head Cap Screw 1/4-20 x 3/4 Gr. #5	2
9	62501392	Solenoid Valve 5 Gpm	1	28	951-002-001	Lock Nut 1/4-20 Flanged Whiz Lock	2
10	625-004-467	Washer, Ght Wht. Rubber	5	29	625-001-963	Clamp, Conduit 1/2	2
11	62500691	Terminal, 1/4 M	3	30	62502716	Fitting, SS RB 1/2 x 1/4	1
12	62501459	Nut Assy W/clamp	1	31	62502596	Valve, Ball 1/2" Brass LF	1
13	950-005-020	S-Tap 10-3/4 Hex Head	4	32	62502593	Press Sw SPDT	1
14	950-002-003	1/4-20 x 3/4 Whiz Bolt	2	33	62502608	Fitting, 1/2 Bulk Head	1
15	392-010-028	S-tap Screw 8-18	2	34	62501169	Fitting, Nipple 1/2 Nylon	2
16	625-900-803	Bracket, Filter	1	35	62501815	Screen 1/2" Nozzle	1
17	62501813	Filter Housing, 1/2 Ports	1	36	62501818	Nozzle W/Screen 1/2"	1
18	62500421	Fitting, Nylon 1/2 Hose x 1/2 MPT 90°	1	37	392-010-019	S-tap Scr #6-20 X 3/8	2
19	62501814	Fitting, Nylon 1/2 Insert	1	38	62500675	Surge Suppressor	1
20	625-900-086	Bracket, Water Meter	2				

* Recommended Spare Parts ** Additional Recommended Spare Parts



* Recommended Spare Parts ** Additional Recommended Spare Parts