

SERVICE PARTS

It is the policy of Coster Water to constantly improve its products whenever it is practical to do so.

Coster Water must therefore reserve the right to redesign or change its equipment or component parts thereof without incurring the obligation to install or furnish such changes on equipment previously delivered.

INSTRUCTIONS FOR ORDERING PARTS

1. The reference numbers in the illustrations correspond to the numbers shown in the "Reference Number" column in the parts listing. The quantity in the "number required" column is the number of parts used in the accompanying illustration. The term "A/R" for number required indicates "as required" where the quantity may vary. Order all parts by their part number and description.
2. Always mention the identification number of the code and serial numbers found on the name plate of the unit on which the part is to be used. Much delay and confusion can be avoided when correct numbers are specified on parts order and correspondence.
3. Owner, order all parts through your local dealer.
4. Dealers must indicate how to ship; whether by truck, rail freight, express, or parcel post.
5. Collect phone calls are not accepted.
6. Address all orders for parts as follows:

Coster Water
Corporate
217 E Plum Steet
Mankato, MN 56001
costerwater.com

INSTRUCTIONS FOR RETURNING PARTS FOR ADJUSTMENT

1. To assure prompt handling of claims, your dealers should follow standard claim and forward claim procedures within thirty (30) days, of any part failure or malfunction believed to be a warranty claim.
2. No returned part will be accepted unless they are transportation prepaid and accompanied by the packing list, copy of the returned goods authorization form, or the packing list copy of the warranty claim form.
3. Parts returned should have a tag attached with sender's name and address clearly printed.

DISCLAIMER

This supplement contains additional information that is specific to units. It is used in conjunction with the basic machine operator's manual which includes safety and operational information.

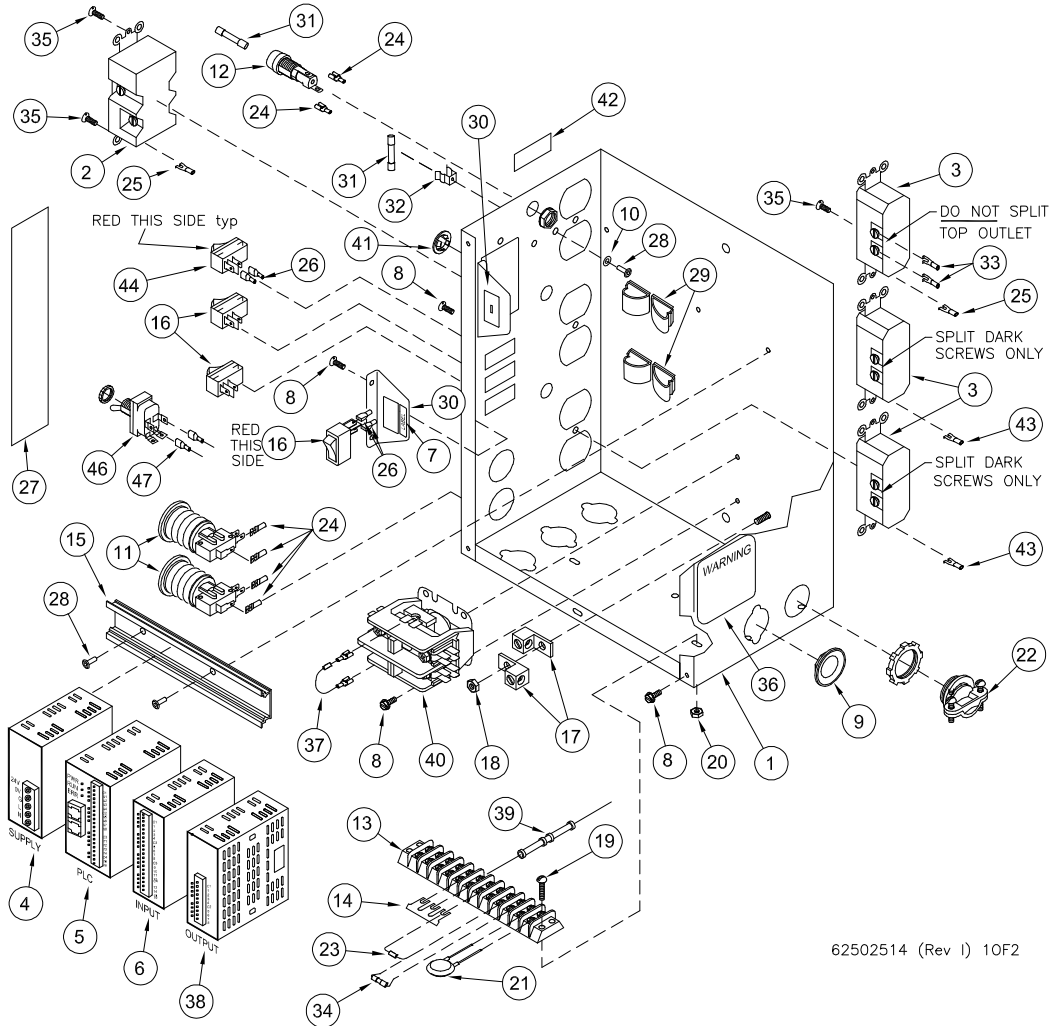
Retain all manuals for future reference. Read all and understand all manuals in their entirety before operation or service.

The information contained in this manual is subject to change without notice.

Coster Water shall not be liable for technical or editorial omissions made herein; nor for incidental or consequential damages resulting from the furnishing, performance, or use of this material.

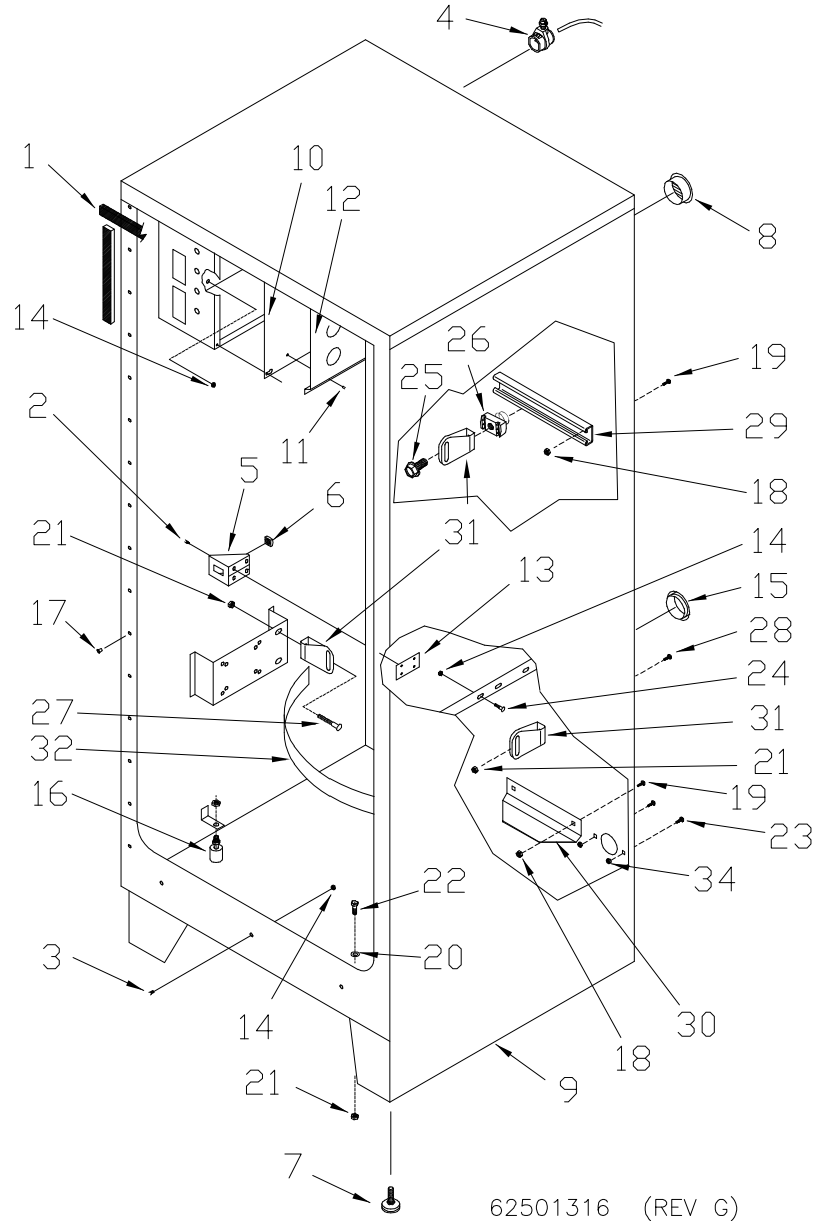
Coster Water
Production Warehouse
201 East Street S
Vernon Center, MN 56090

ELECTRICAL BOX COMPONENT LOCATION



REF. NO.	PART NUMBER	DESCRIPTION	QTY.	REF. NO.	PART NUMBER	DESCRIPTION	QTY.
1	62502525	Assembly, Dual Electrical Box	1	25	62502962	Terminal, Spade #10 16-14 Ga.	2
2	625-004-068	GFCI Receptacle, 15 Amp	1	26	62500702	Terminal, 1/4 F Ful Insulated 22-18	3
3	625-004-252	Receptacle, 15 Amp 110V	3	27	62502534	Decal, Dual Vend Operation	1
4	62502518	Module, 24 VDC Power Supply	1	28	954-002-010	Rivet 1/8 x 1/8 SS	3
5	62502522	PLC, 8/6 I/O W/Dual Program	1	29	62500156	Clamp, 3/4 Self Adhesive	4
6	62502523	Module, 16 Input 24 VDC	1	30	62502536	Bracket, Calibrate	1
7	62502537	Label, Run / Cal	1	31	62500634	Switch Fuse, 5A 3Ag 250V Fast	2
8	950-005-006	Self Tapping #8-36 x 3/8	6	32	62500635	Acting Fuse, Metal Clip 3Ag	1
9	625-004-073	Seal, Knockout 3/4 Steel	1	33	62502963	Terminal, Spade #10, 22-18 Ga.	2
10	952-004-068	Washer .2 x .44 SS	1	34	62501400	Fuse, 1A 2Ag Fast	1
11	62502780	Switch, SPST, Red Push Button	2	35	950-004-024	Machine Screw #6-32 x 3/8 Slotted Pan Head	5
12	39207034	Fuse Holder, 3Ag 1/4" Q-Conn.	1	36	625-002-075	Decal, Warning Elect	1
13	625-001-265	Term Block, 12 Pole, Jumper, Snap Off Strip Style Din Rail,	1	37	N/A	N/A	N/A
14	625-004-051	Electrical Box	3	38	N/A	N/A	N/A
15	625-900-334	Switch, Rocker SPST	1	39	N/A	N/A	N/A
16	62502526	Term Block, Ground Lug Al 4-14 Wire	2	40	N/A	N/A	N/A
17	625-001-266	Nut-Hex #10-24	2	41	625-004-189	Plug BPF 1/2 Black Plastic	1
18	951-001-002	Machine Screw #8-32 X 5/8	1	42	62502944	Label, Upper Outlet	1
19	950-004-086	Nut-Hex #8-32	2	43	62502964	Terminal, Spade #10 10-12 Ga.	2
20	951-001-012	Varistor, Surge Absorber 6500A	2	44	62502972	Connector IDC 18-14 AWG	1
21	39207032	Fitting Elec, Romex Connect 3/4	1	45	62502133	Connector T-Tap 22-18 Ga.	1
22	625-001-312	Suppressor, 200V TVS 1500W	1	46	62501603	Switch, Main Power Toggle DPST 1/4 F	1
23	62501684	Terminal, 3/16 F	1	47	625-002-278	Terminal, 1/4F 14-16 AWG Full Insulation	2
24	62500631		6				

BASIC CABINET

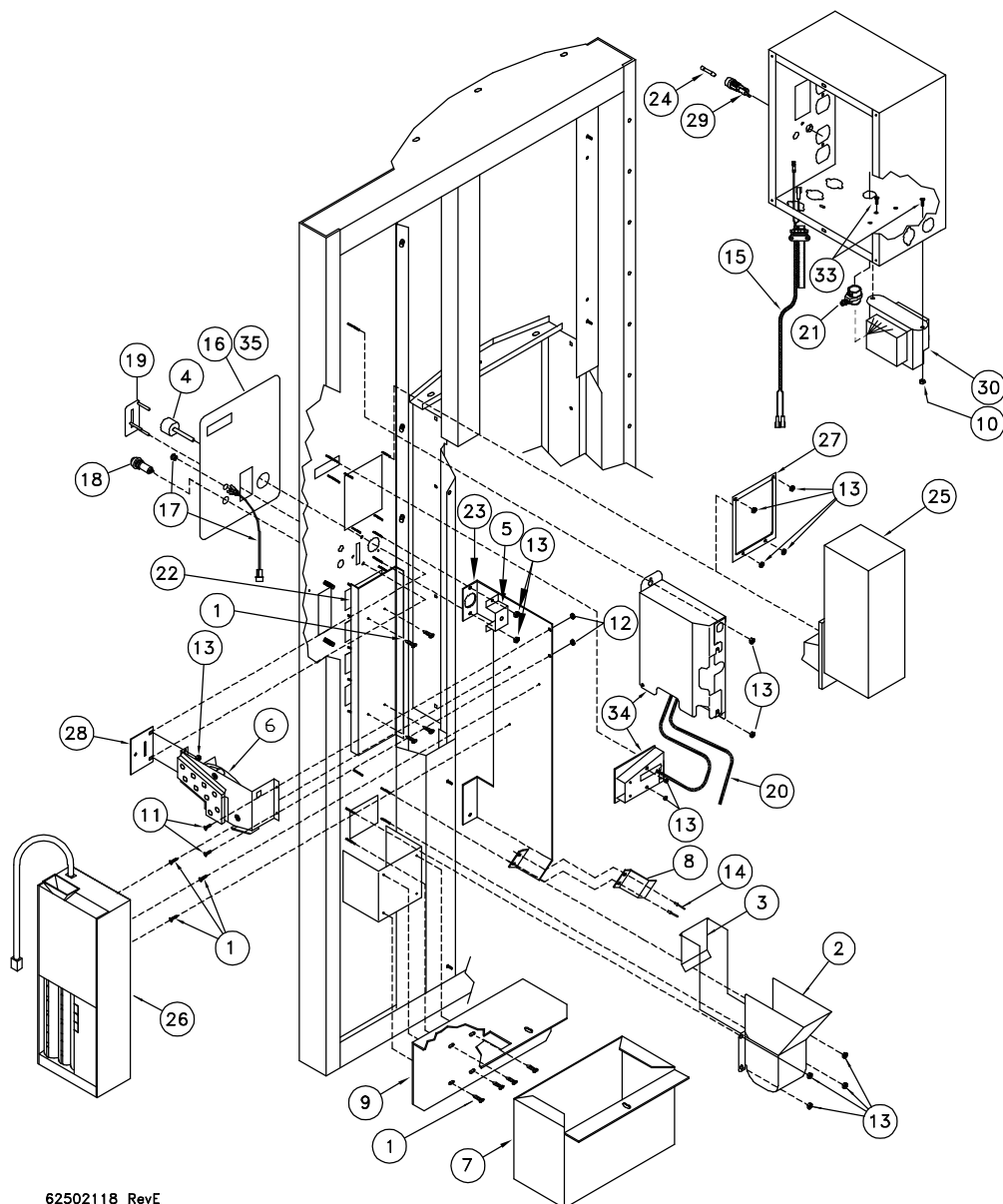


62501316 (REV G)

REF. NO.	PART NUMBER	DESCRIPTION	QTY.	REF. NO.	PART NUMBER	DESCRIPTION	QTY.
1	921-001-041	Weather Strip 5/8 x 3/8	16	18	951-002-002	Nut 5/16-18 Flanged Whiz Lock	4
2	060905	Self-Tap Screw #10-24 x 1/2 SHW Head	4	19	950-003-002	Carriage Bolt 5/16-18 x 1/2	4
3	950-004-002	Machine Screw 1/4-20 x 3/8 Slotted Tr Head	3	20	625-001-509	O-Ring	2
4	62500498	Strain Relief	1	21	951-002-003	Hex Nut 3/8-16 Whiz Lock	5
5	625-001-070	Vend Part, Bracket	1	22	031-09103	Hex Head Cap Screw 3/8 x 3/4 SS	2
6	625-001-075	Vending Part, Nut 1/2-13	1	23	950-003-081	Carriage Bolt #10 x 3/4 SS	8
7	625-001-950	Leg, 3/8-16 Rubber Leveler	4	24	950-002-003	Hex Bolt 1/4-20 x 3/4 Flanged Whiz Lock	5
8	625-001-965	Vent, 2" Dia. Aluminum Louvered	4	25	950-001-089	Hex Head Cap Screw 3/8-16 x 3/4	1
9	62501310	Cabinet, Weldment	1	26	625-004-161	Nut, Unistrut 3/8 W/Spring	1
10	625-900-333	Cover, Electrical Box	1	27	030-16072	Carriage Bolt 3/8-16 x 2 Gr. 5 Full Thread	2
11	954-002-010	Pop Rivet 1/8 x 1/8 Stain OEDH	4	28	030-16067	Carriage Bolt 3/8-16 x 3/4	1
12	625-900-774	Bracket, Literature	1	29	62500966	Channel Unistrut	1
13	625-901-099	Plate, Door Latch	1	30	62501311	Bracket, Vessel Support	1
14	951-002-001	Nut 1/4-20 Flanged Whiz Lock	7	31	616606	Tank Belt Anchor	8
15	625-004-325	Plug, 1 1/8 Plastic	2	32	625-900-367	Strap, 1 3/4 x 32"	2
16	*625-001-325	Level Switch, N/C Float & Stem	1	33	N/A	N/A	N/A
17	954-002-007	Pop Rivet 1/4 x 1/4 S-S	16	34	951-002-012	Hex Nut #10-24 Whiz Lock	8

* Recommended Spare Parts ** Additional Recommended Spare Parts

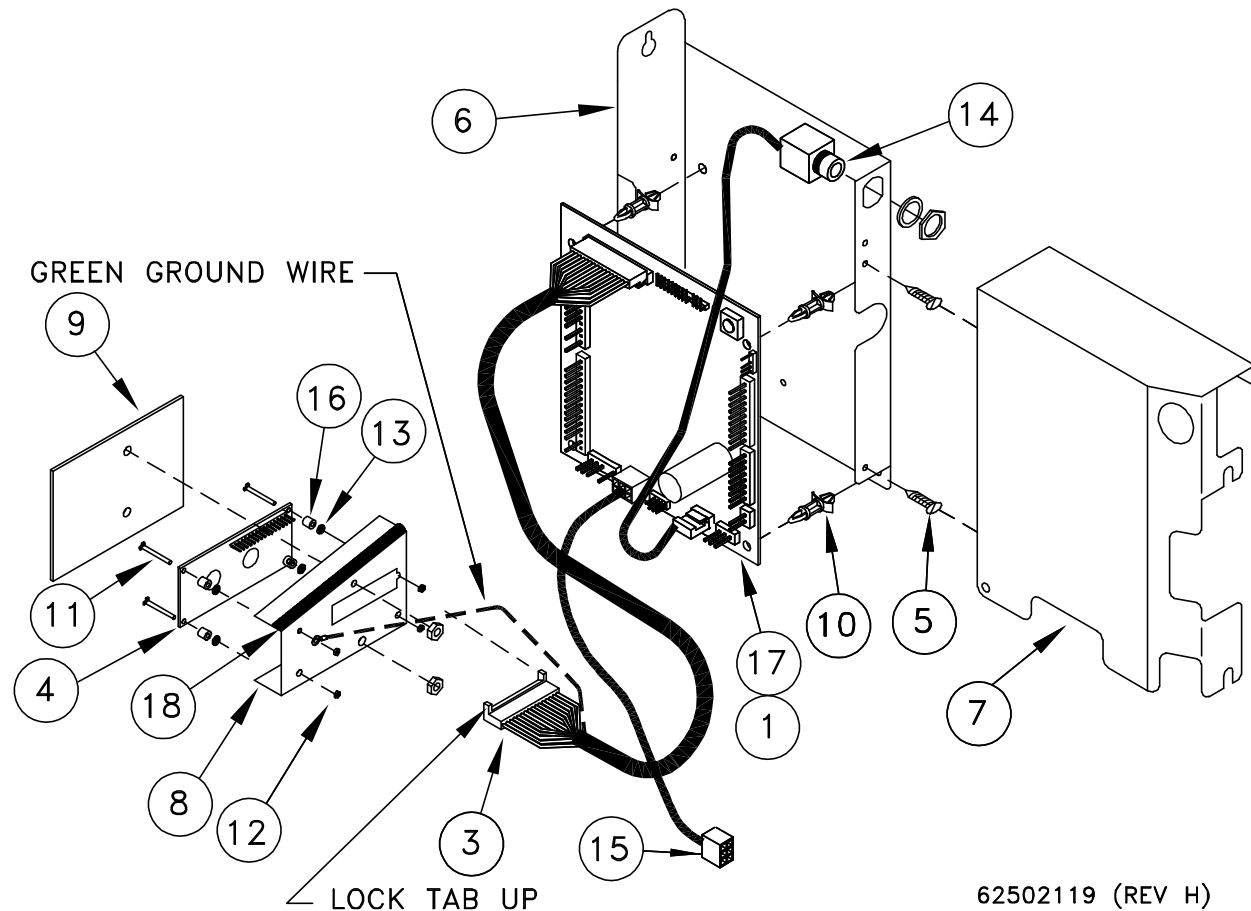
DOOR, COIN MECHANISM ACCESSORIES



62502118 RevE

REF. NO.	PART NUMBER	DESCRIPTION	QTY.	REF. NO.	PART NUMBER	DESCRIPTION	QTY.
1	392-010-028	Self Tap Screw #8-18 x 1/2 Hex Head	11	18	62502009	Pause Button	1
2	62501484	Coin Return, SS (Includes Item 3)	1	19	62500647	Coin Slot Guard	1
3	625-004-766	Coin Return Door SS	1	20	62503240	VMC Harness	NA
4	625-004-768	Button, Coin Return	1	21	62500498	Strain Relief	1
5	625-004-769	Coin Return Bracket Support	1	22	62500652	Guard, Coin Mech.	1
6	62501280	Bracket Assembly Coin Return	1	23	62500653	Bracket, Coin Mech.	1
7	625-900-777	Cash Box	1	24	62500634	Fuse 5A 3Ag	1
8	625-900-900	Chute, Coin	1	25	*Varies	Bill Validator	0
9	625-900-936	Bracket Cash Box	1	26	*Varies	Coin Mech	0
10	951-003-011	Hex Lock Nut 8-32	2	27	62500666	Cover, \$ Bill Hole	1
11	950-004-024	Mach Screw, #6 x 3/8 Pan Head Hex	2	28	625-901-091	Coin Slot, SS	1
12	951-001-001	Nut 6-32	2	29	39207034	Fuse Holder	1
13	951-001-012	Hex Nut #8-32	18	30	62503149	Transformer, Control 75Va	1
14	954-002-010	Pop Rivet 1/8 x 1/8 SS OEDH	2	31	62500631	Terminal, 3/16 22-18	1
15	62503247	Harness, Coin 1840 VMC	1	32	62500691	Terminal, 1/4M 22-18	1
16	62502673	Decal, Instruction Coin VMC 1840	1	33	950-004-032	#8-32 x 1/2 Slot Head	2
17	62503249	Light, Red Led 110V	1	34	62502119	1840 VMC Coin Board Assembly (See Page 54)	1

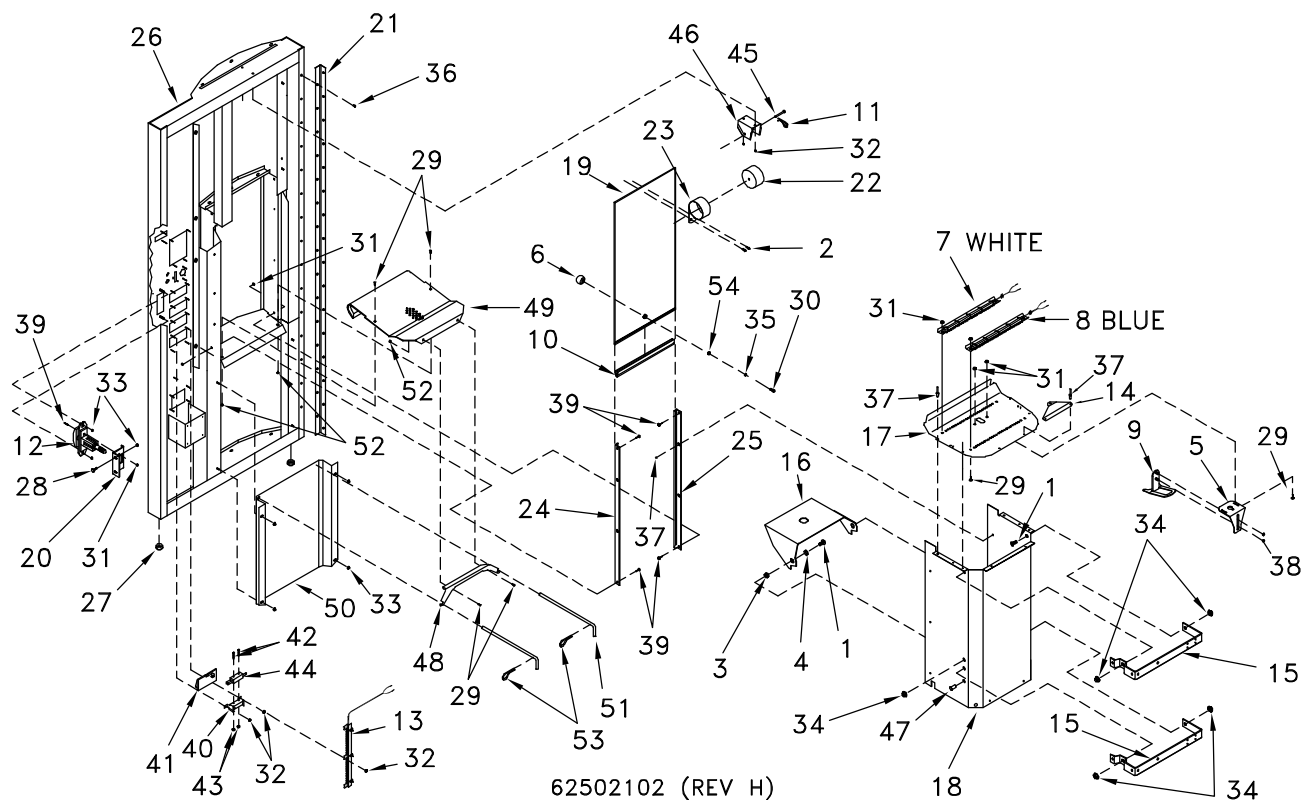
VENDING MACHINE CONTROLLER



REF. NO.	PART NUMBER	DESCRIPTION	QTY.	REF. NO.	PART NUMBER	DESCRIPTION	QTY.
1	**62502004	VCM Kit, Includes Items 3, 4, & 17	0	10	39200014	Standoff, Circuit Board 1/4	4
2	N/A	N/A	N/A	11	950-004-116	Machine Screw, #2-56 x 5/8 SS Phillips Head	4
3	62502006	Connector Cord, Only	1	12	951-001-033	Nut, Hex #2-56 SS	4
4	62502672	OLED Display Only	1	13	62502203	Retainer, Nylon #2	4
5	392-010-028	Self Tap Screw #8-32 x 1/2	2	14	62502120	Harness, DEX Cable (Optional)	1
6	62502095	Bracket, CB Mt. 1840	1	15	62502131	Harness, MDB 12" Extender	1
7	62502094	Bracket, CB Cover 1840	1	16	62502200	Bushing, Nylon Spacer	4
8	62502676	Bracket, Display (Shown)	1	17	62502678	VMC, Includes Board & Cable #3	1
9	62502675	Window, Clear (Shown 2 7/8 x 5 5/8)	1	18	62502746	Silicone Sealant	N/A

* Recommended Spare Parts ** Additional Recommended Spare Parts

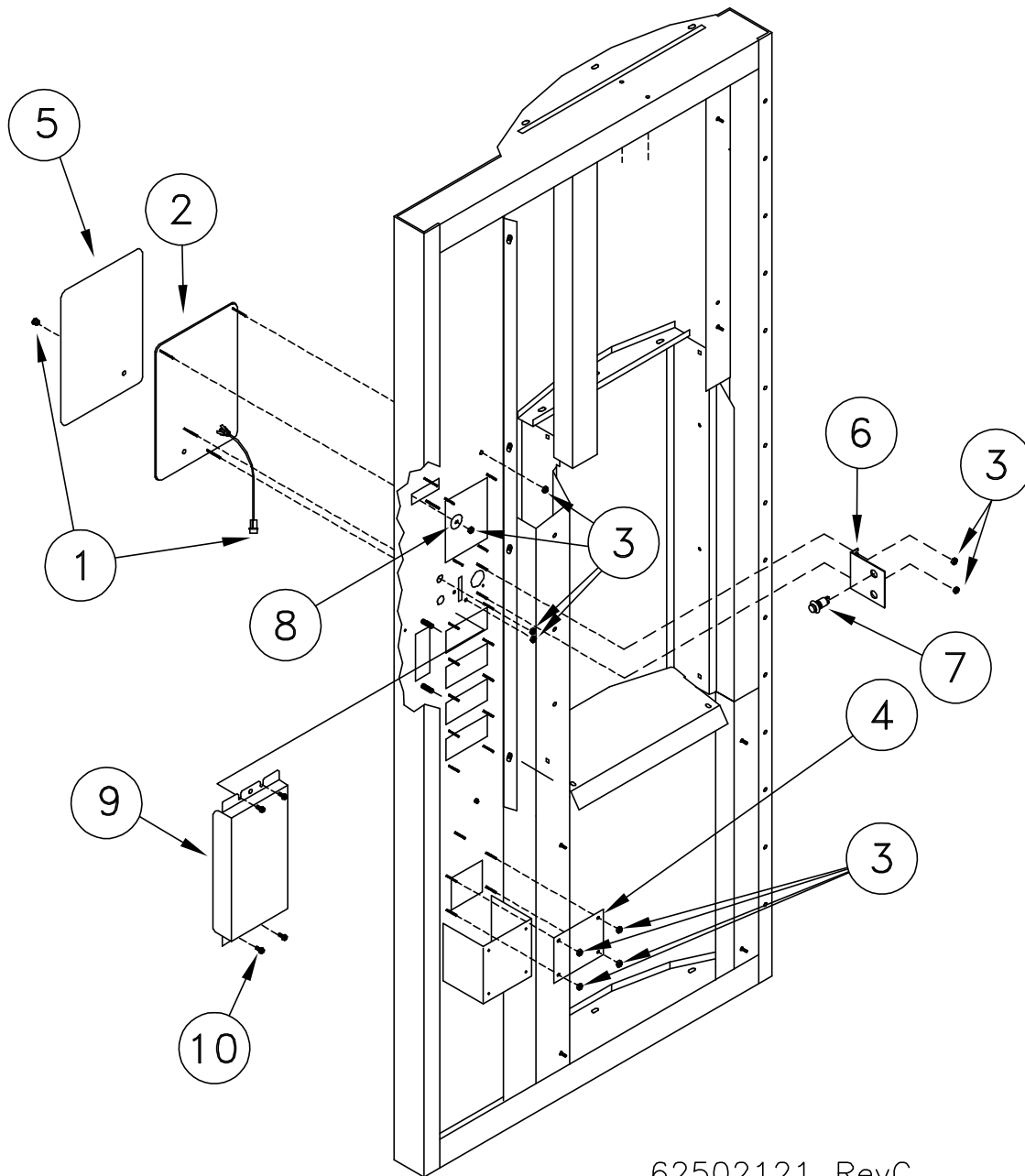
DOOR, WIDE DISPENSER



REF. NO.	PART NUMBER	DESCRIPTION	QTY.	REF. NO.	PART NUMBER	DESCRIPTION	QTY.
1	950-011-063	Socket Head Cap Screw 3/8-16 x 3/4 SS	6	28	950-003-065	Carriage Bolt 1/4-20 x 5/8 Gr. 5	2
2	950-005-031	Self Tap Screw #6 x 1/4 Type B	2	29	950-003-071	Carriage Bolt #10-24 x 1/2 SS	10
3	061910	Hex Nut 3/8-16 SS	4	30	950-004-121	Screw SS 1/4-20 x 3/4	1
4	061916	3/8 Flat Washer SS	2	31	951-002-012	Hex Nut #10-24 Whiz Lock	12
5	62501122	Bracket, Upper Guide	1	32	951-001-012	Nut-Hex #8-32	15
6	62503137	Knob-Plastic, Black	1	33	951-002-001	Flanged Whiz Lock Nut 1/4-20	8
7	62502152	Sec. LED White Light	1	34	951-002-003	Hex Nut 3/8-16 Whiz Lock	6
8	62502154	Sec. LED Blue Light	1	35	952-002-020	Flat Washer 3/4 x 1" SS	2
9	62501121	Bracket, Lower Guide	1	36	954-002-007	Rivet-Pop 1/4 x 1/4 SS	15
10	**625-004-053	Trim, Edge Guard	1,1	37	954-002-013	Pop Rivet 3/16X1/4 Closed End	12
11	953-005-004	3/16" Cotter Pin	1	38	061605	Nut 1/4-20 SS Nylon Lock	2
12	625-005-166	T-Handle Lock Flush Mount	1	39	950-003-081	Bolt #10 x 3/4 CRG SS	6
13	62502153	Sec. LED Button Light	1	40	62500618	Bracket, Rect. Button Mount	5
14	62502100	Bracket, Water Meter	1	41	*62500617	Switch, Rect. Push Button	4
15	625-900-300	Bracket, UV Light	2	42	700-10904	Machine Screw #6-32 x 1 Slotted Pan Head	8
16	625-900-303	Shelf	1	43	951-001-001	Hex Nut #6-32	8
17	62502099	Panel, Led Dispenser	1	44	*62500615	Switch, SPST, Micro	4
18	62500878	Housing, S.S., Wide Dispenser	1	45	953-002-039	Clevis Pin, 3/16 X 1-3/4	1
19	**62500883	Door, Wide Dispenser	1	46	62500884	Bracket, Spring Drum	1
20	625-900-957	Bracket, Door Lock Retainer	1	47	62500922	Plug, 3/8 Locking Hole, Black Plastic	2
21	625-901-100	Hinge, Vending Door	1	48	62500140	Bracket, Drain Bucket	1
22	62500886	Drum, C.F. Spring	1	49	62500872	Drain Pan Wide	1
23	**62500885	Spring, 2 lb. Constant Force	1	50	62500185	Shield Lower	1
24	62500890	Track R.H., Wide Dispenser	1	51	62500349	Pin Drain Bucket	2
25	62500889	Track L.H. Wide Dispenser	1	52	951-001-002	Nut 10-24 SS	4
26	62502101	Weldment, VMC Door 4 Sel.	1	53	060854	Cotter Pin 1/8 x 3/4	2
27	62500347	Vent 7/8 Dia. Plastic	2	54	951-005-104	Jam Nut 5/16-18 SS	1

* Recommended Spare Parts ** Additional Recommended Spare Parts

DOOR, NON-COIN MECHANISM ACCESSORIES

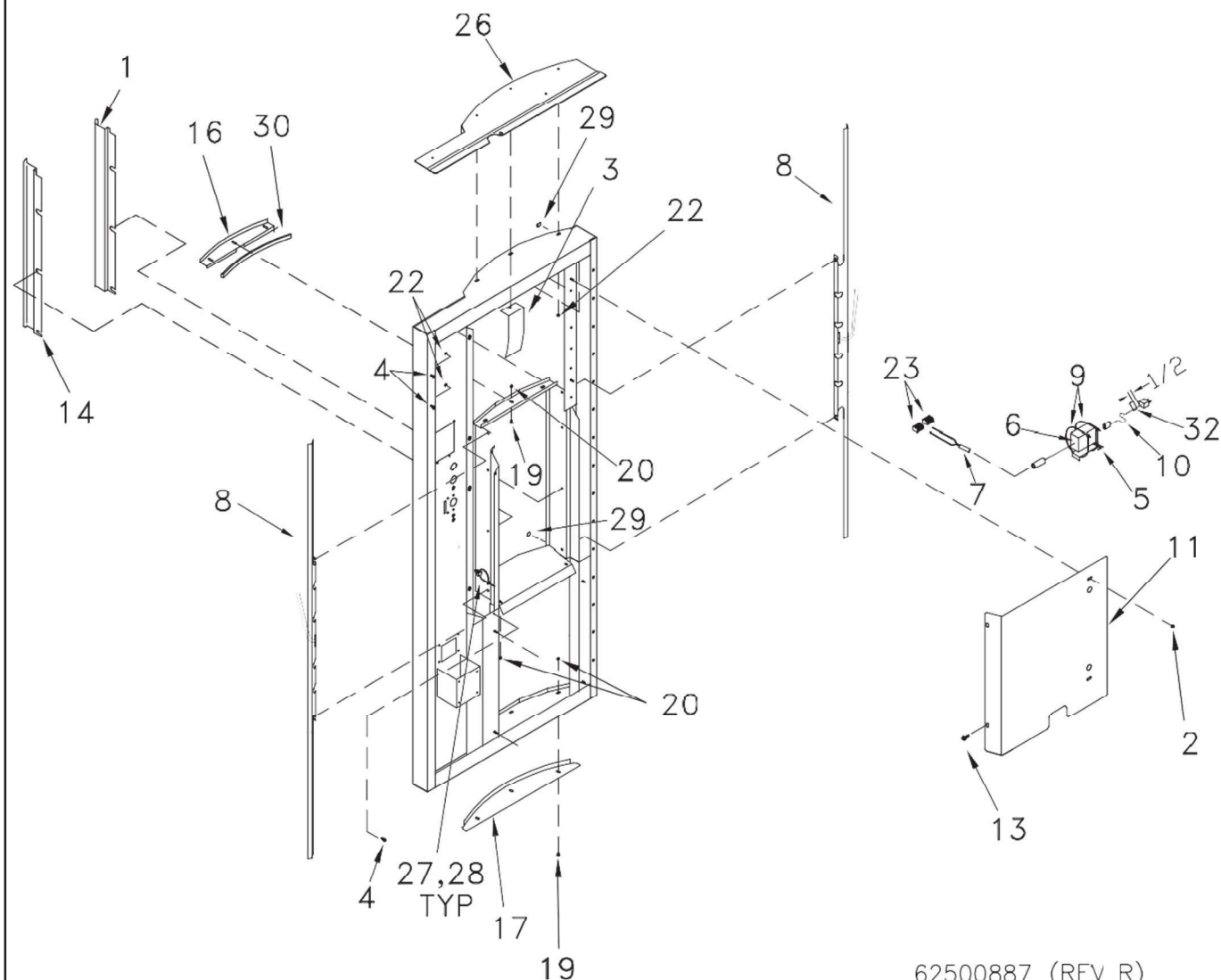


62502121 RevC

REF. NO.	PART NUMBER	DESCRIPTION	QTY.	REF. NO.	PART NUMBER	DESCRIPTION	QTY.
1	62503249	LED, Service Light 110V	1	6	62500686	Bracket, Button	1
2	62502097	Cover Plate, Non-Coin VMC Door	1	7	62502009	Switch, SPST Red Push Button	1
3	951-001-012	Hex Nut #8-32	10	8	952-004-066	Washer, .28 ID x 1.25 OD	1
4	62500636	Cover Plate, Coin Return	1	9	62502948	Cover, Push Button	1
5	62502110	Decal, Instructions, 4 Select, N-C, Di	1	10	392-010-028	#8 x 1/2 Self Tapping Screw	4

* Recommended Spare Parts ** Additional Recommended Spare Parts

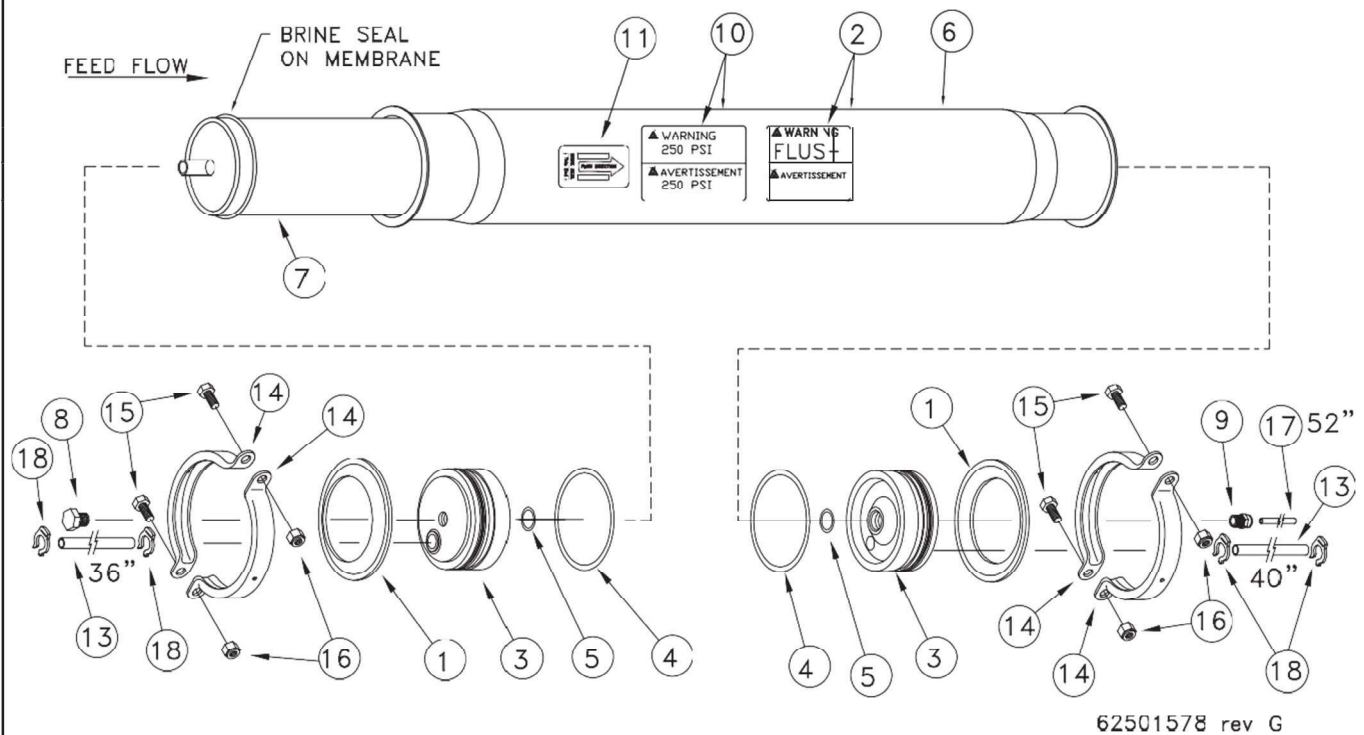
DOOR, TRIM WIDE DISPENSER



62500887 (REV R)

REF. NO.	PART NUMBER	DESCRIPTION	QTY.	REF. NO.	PART NUMBER	DESCRIPTION	QTY.
1	N/A	N/A	N/A	17	62500321	Weld End Cap	1
2	951-002-001	Whiz Nut 1/4-20	2	18	N/A	N/A	N/A
3	62501139	Bracket, Wide Disp Door Guide	1	19	950-003-071	Carriage Bolt #10-24 x 1/2 SS	6
4	392-010-028	Self-Tap Screw #8-18 x 1/2 SHW Head	3	20	951-001-002	Hex Nut #10-24 SS	6
5	62502951	Bracket, Power Supply	1	21	N/A	N/A	N/A
6	62502950	Power Supply, LED Lights	1	22	951-001-012	Hex Nut #8-32	7
7	62502151	Adapter, Power Supply	1	23	62502986	Connector, Lever Nut	2
8	62502149	LED Strip Light Assembly	2	24	N/A	N/A	N/A
9	367-001-011	Cable Tie, 14"	2	25	N/A	N/A	N/A
10	62502949	Power Cord, 6 Foot	1	26	62501333	Weldment, Top Door Cover	1
11	62502604	Shield, Upper Curved Door	1	27	625-001-469	Wire Tie, 5"	18
12	N/A	N/A	N/A	28	62501582	Wire Tie Down, Push In 1/4"	8
13	950-005-004	Self Tapping Screw 1/4-20 x 1/2	2	29	62501362	Felt, Disc 1/2 x 1/16 Self Stick	12
14	62500869	Trim L.H., Wide Disp.	1	30	921-001-507	Weather Strip, 3/8 x 1/4 D	1
15	62500870	Trim R.H., Wide Disp.	1	31	625-002-305	Adhesive Wire Tie Down	1
16	62501740	Trim, Top, Wide Disp.	1				

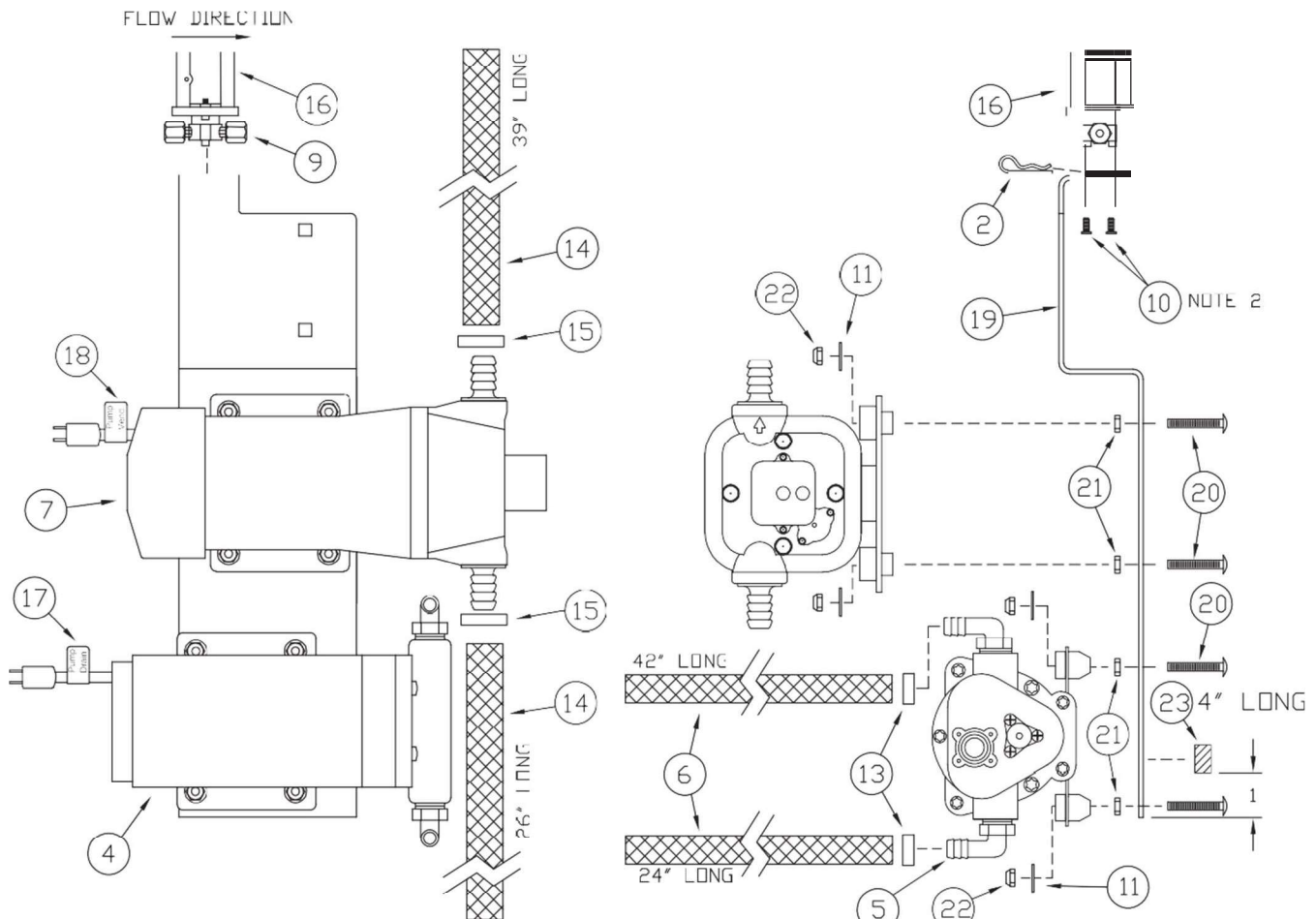
4" VESSEL/RO MEMBRANE



REF. NO.	PART NUMBER	DESCRIPTION	QTY.	REF. NO.	PART NUMBER	DESCRIPTION	QTY.
1	62501497	Ring, End Cap Retainer	2	11	62501209	Decal, Brine Seal Flow Direct	1
2	62502598	Decal, SBS Flush	2	12	N/A	N/A	N/A
3	62501645	Assembly, End Cap 4 W/John Quest	2	13	62501570	Tubing, 1/2 OD x 3/8 ID Poly.	6.4
4	625-001-506	O-Ring 342 Buna	2	14	62501496	Clamp, Formed Flange	4
5	625-001-502	O-Ring 116 Buna	2	15	031-09103	Hex Head Cap Screw 3/8-16 x 3/4 SS	4
6	62501493	Vessel, SS 4" (Includes (1) #10)	1	16	951-003-013	Lock Nut 3/8-16 SS	4
7	62501113	Membrane, Filmtec XLE 4040	1	17	625-001-903	Tubing, PE 1/4 OD	4.4
	625-001-634	Membrane, Filmtec TW30-4040	1	18	62501721	Clip 1/2 Lock	4
8	625-003-230	Fitting, PVC Sch 80 Plug 3/8	1	19	62501528	Vessel With End Caps (W/O Membrane, Item 7, 8, 9, 13, 17, 18)	1
9	625-005-940	Fitting, Conn 3/8 MPT x 1/4 T	1				
10	62502956	Decal, Vessel Warning	1				

* Recommended Spare Parts ** Additional Recommended Spare Parts

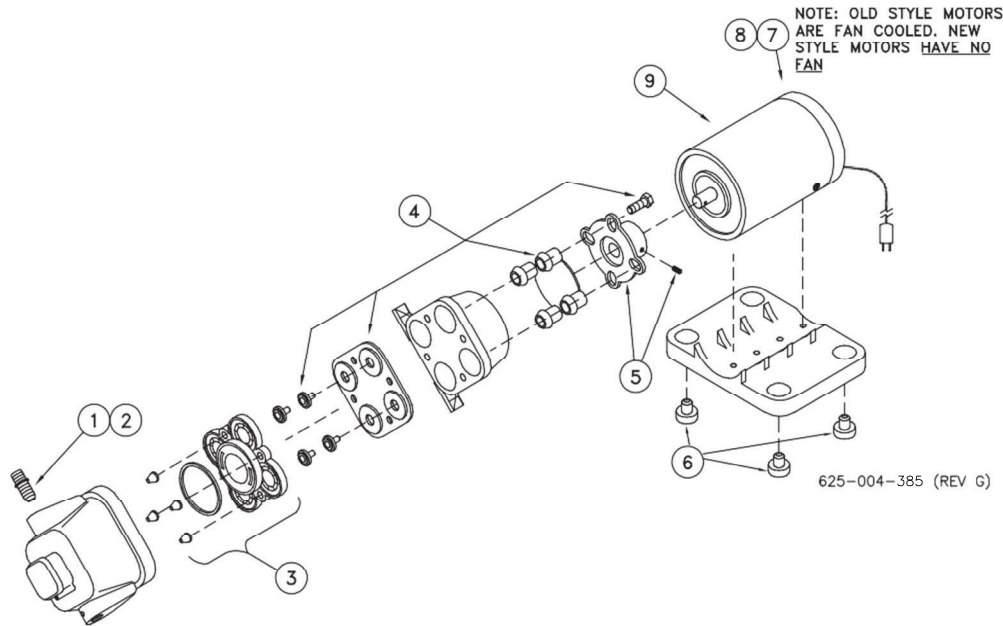
DISPENSER/DRAIN PUMP ASSEMBLY



REF. NO.	PART NUMBER	DESCRIPTION	QTY.	REF. NO.	PART NUMBER	DESCRIPTION	QTY.
1	N/A	N/A	N/A	13	625-002-876	Hose Clamp, 14.5Mm-17Mm OD SS	2
2	953-005-004	Cotter Pin	1	14	625-001-929	Hose, PVC Braided 1/2 ID .85 OD	5.4
3	N/A	N/A	N/A	15	625-002-881	Hose Clamp .76-.89 Stepless	2
4	62501748	Pump 5884, 115 VAC Aquatec	1	16	625-004-383	Solenoid Valve	1
5	62500419	Fitting, Nylon Elbow 3/8 MPT x 3/8 Barb	2	17	62502819	Decal, Drain Pump	1
6	625-001-920	Hose, PVC Braided 3/8 ID x 5/8 OD	5.5	18	62502820	Decal, Vend Pump	1
7	625-004-385	Pump 3.5 GPM Flojet	1	19	62502872	Bracket, Drain/Disp Pump	1
8	N/A	N/A	N/A	20	950-003-086	Carriage Bolt, 10-24 x 1-1/4	8
9	625-001-717	Fitting, 1/4 Ferrule Nut	2	21	951-001-002	Hex Nut 10-24 SS	8
10	392-010-028	Self-Tapping Screw 8-18 x 1/2	2	22	392-010-010	Lock Nut, 10-24	8
11	952-004-068	Washer-Flat #10 SS	8	23	921-001-041	Weather Strip 5/8 x 3/8	0.33
12	N/A	N/A	N/A				

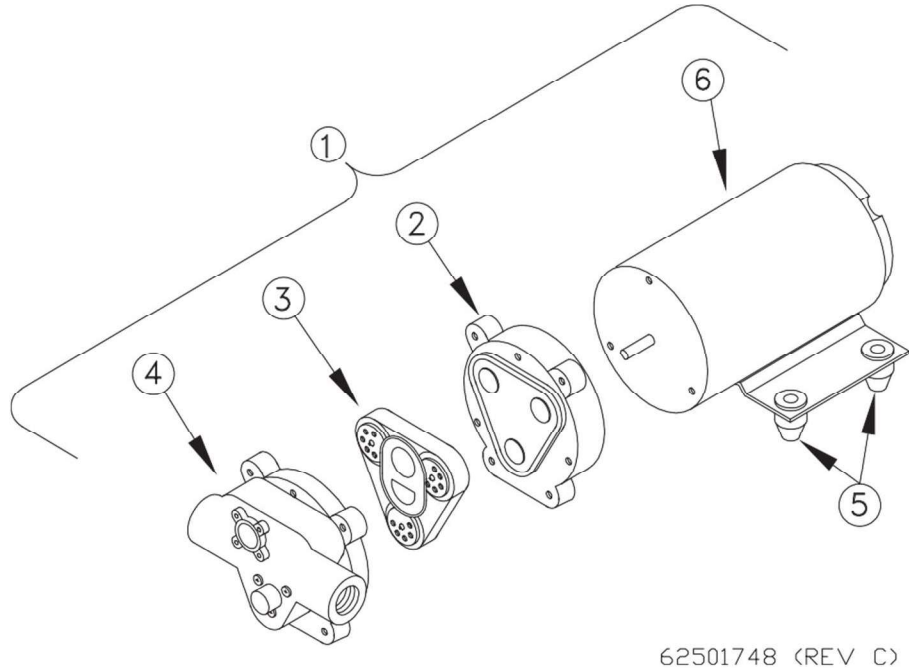
* Recommended Spare Parts ** Additional Recommended Spare Parts

FLOJET DISPENSING PUMP REPAIR PARTS/REBUILD KITS



REF. NO.	PART NUMBER	DESCRIPTION	QTY.	REF. NO.	PART NUMBER	DESCRIPTION	QTY.
-	*625-004-385	Pump Assembly, Flojet 3.5 gpm	1	6	62500801	Kit, Grommet (4)	1
1	62500454	Fittings, Standard 1/2	2	7	62502510	Kit, Brush (New Style Pump W/O Fan)	1
2	62500508	Fittings, Optional 3/8	2	7	625-006-011	Kit, Brush (Old Style Pump W/Fan)	1
3	62500456	Kit, Check Valve	1	8	62502511	Kit, Brush & End Bell	1
4	62500455	Kit, Diaphragm W/Piston & Screws	1	9	62502512	Kit, Fan & Shroud	1
5	62500802	Kit, Cam Bearings W/Screw	1				

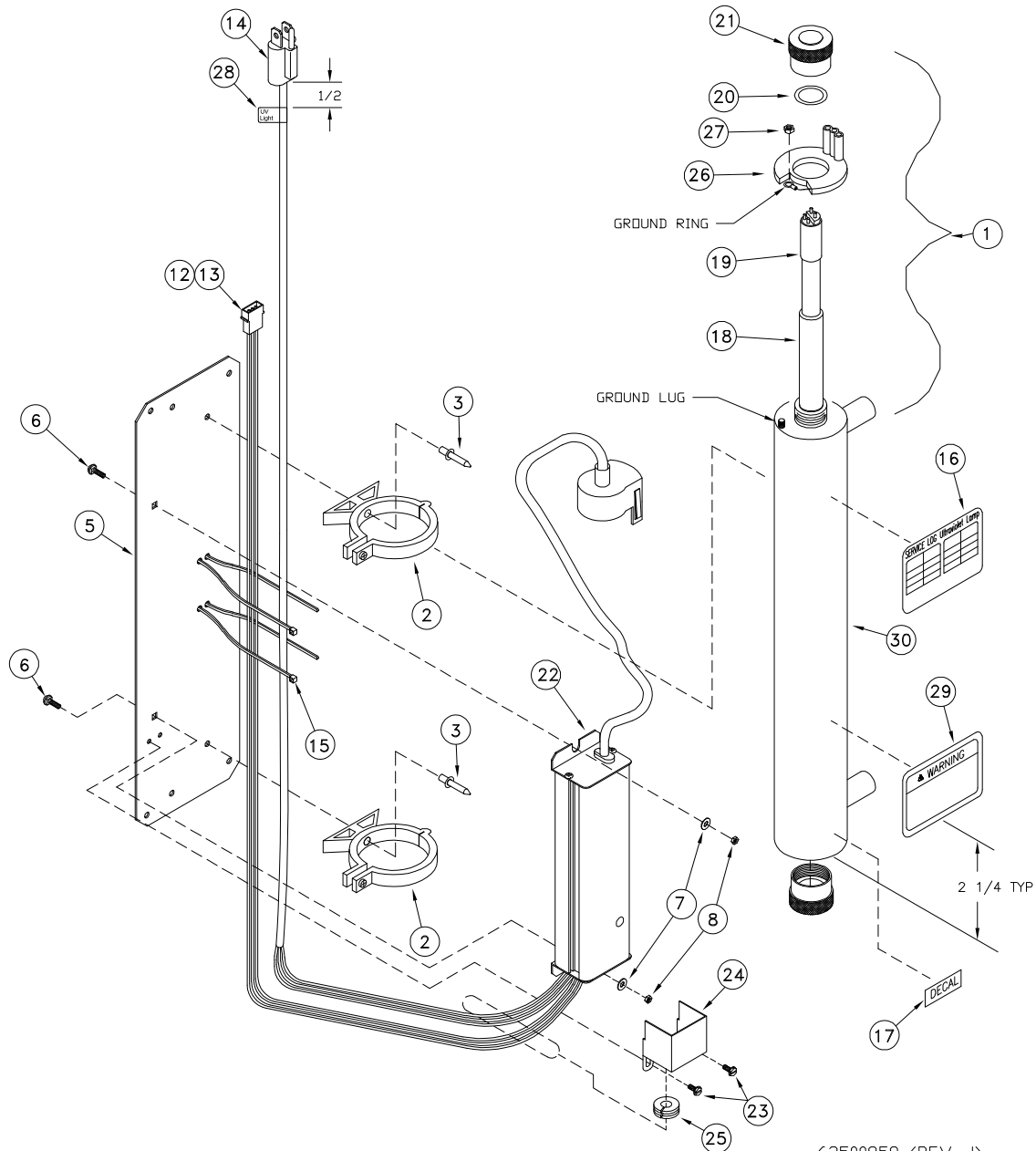
AQUATEC DRAIN PUMP REPAIR PARTS/REBUILD KITS



REF. NO.	PART NUMBER	DESCRIPTION	QTY.	REF. NO.	PART NUMBER	DESCRIPTION	QTY.
1	62501748	Pump Assembly	1	4	62501761	Kit, Pump Housing Aquatec 5884	1
2	62501763	Kit, Cam Bearing, Aquatec 5884	1	5	62501770	Grommet Isolator (Kit, 4 Pieces)	1
3	62501762	Kit, Check Valve, Aquatec 5884	1	6	62501850	Motor, Electrical N52UL	1

* Recommended Spare Parts ** Additional Recommended Spare Parts

U.V. ASSEMBLY, R-CAN ICE

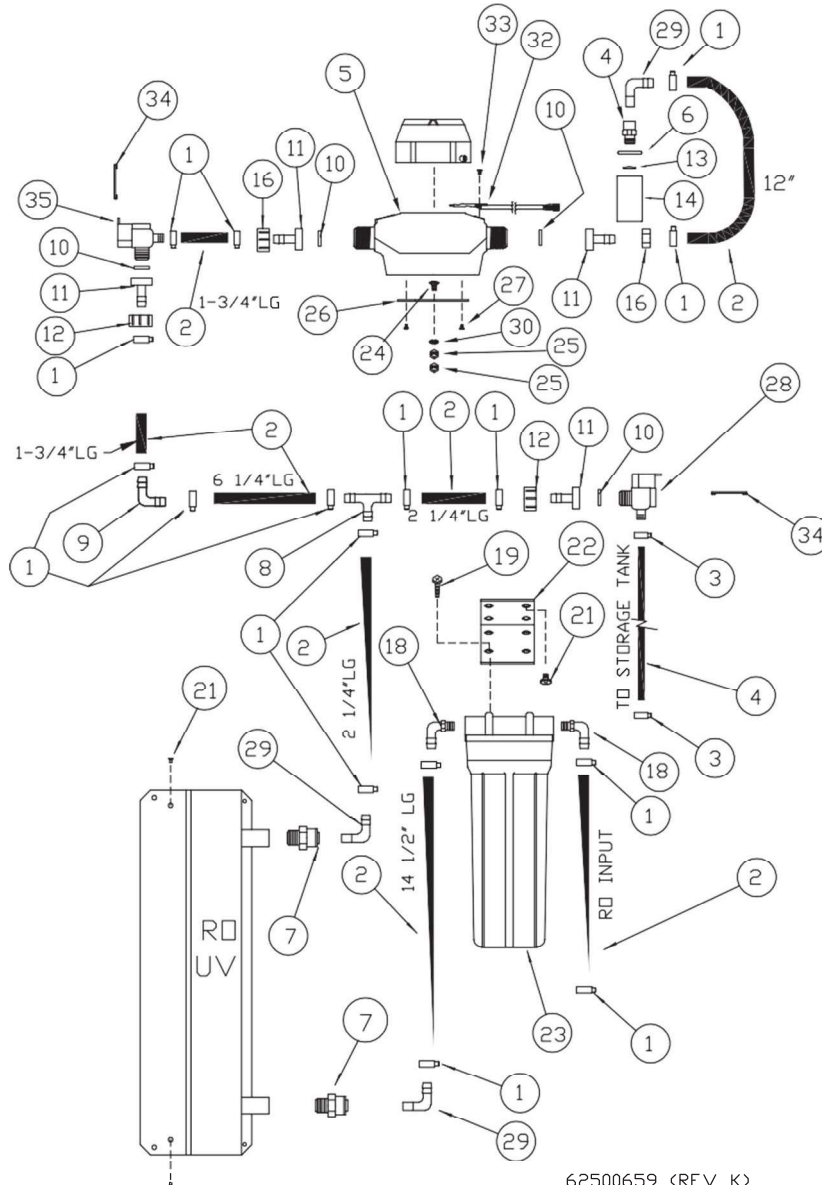


62500859 (REV J)

REF. NO.	PART NUMBER	DESCRIPTION	QTY.	REF. NO.	PART NUMBER	DESCRIPTION	QTY.
1	62502822	Light, 5 GPM UV R-Can (Includes 16, 17, 22 & 29)	1	16	62502938	Decal, Service Log	1
2	N/A	Clip Included W/Item 1	2	17	62500940	Decal, Bulb Replacement	1
3	954-002-003	Pop Rivet 3/16 x 3/8 Stain OEDH	2	18	*62500855	Sleeve, Quartz UV QS-463	1
4	N/A	N/A	N/A	19	*62500854	Light, UV S463RL R-Can	1
5	625-901-072	Bracket 5 GPM Trojan Mount	1	20	62500853	O-Ring, 5 GPM UV OR-212	2
6	950-003-071	Carriage Bolt #10-24 x 1/2 SS	2	21	62500857	Nut, UV AL Gland RN-001	2
7	952-004-062	Washer, 1/4 SS	2	22	62500856	Ballast Electronic BA-ICE-VI	1
8	951-001-002	Hex Nut #10-24 SS	2	23	061034	Self Tap Screw, 6-32 x 3/16	2
9	N/A	N/A	N/A	24	62501719	Elec Cover, UV Light	1
10	N/A	N/A	N/A	25	62501720	Grommet, Rubber 3/5 x 5/8	1
11	N/A	N/A	N/A	26	N/A	N/A	N/A
12	62500641	Pin, 24-18 ga Mate-N-Lok	3	27	N/A	N/A	N/A
13	62500682	Housing, 3 Pin Mate-N-Lok	1	28	62502930	Label UV Cord	1
14	62500690	Plug, W/18-3 SJT 110 V 59" Cord	1	29	62502939	Decal, Warning (Included With 1)	1
15	625-001-469	Wire Tie, 1/8-5/8 Dia. 5 L	2	30	62503053	Canister (Includes 16 & 29)	1

Recommended Spare Parts ** Additional Recommended Spare Parts

PLUMBING COMPONENTS OPEN TANK RO ONLY

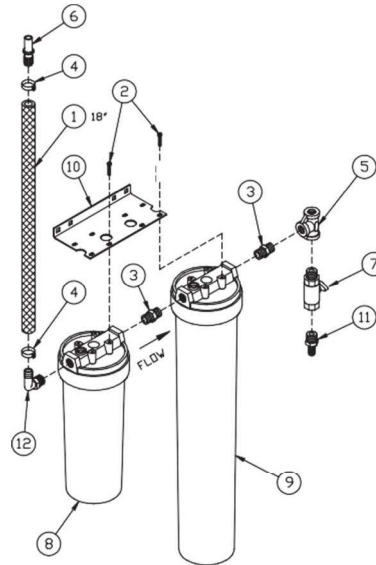


62500659 (REV K)

REF. NO.	PART NUMBER	DESCRIPTION	QTY.	REF. NO.	PART NUMBER	DESCRIPTION	QTY.
1	625-002-881	Hose Clamp, .76 x .89	16	18	62500430	Elbow Adapter 3/8 x 1/2	2
2	625-001-929	1/2 PVC Braided. Hose	3.4	19	950-005-020	Self-Tap #10-3/4 Hex	4
3	625-002-876	Hose Clamp, 14.5mm 17mm OD SS	2	20	N/A	N/A	N/A
4	625-001-672	Fitting, 1/2 M x 1/2 T JG	1	21	392-010-028	Self-Tap Screw 8-18 x 1/2 Hex Head	6
5	62500658	Water Meter, (Standard)	1	22	625-900-941	Bracket NT. Filter	1
	62500790	Water Meter, Metric (Optional)	1	23	625-001-560	Filter HSG Amatek 10 WO/PR	1
6	39212011	Seal Ring 1/2	1	24	950-003-065	Carriage Bolt 1/4-20 x 5/8 Gr. 5	1
7	625-005-976	Fitting, John Guest, Conn. 3/8 M x 1/2 T	2	25	951-002-001	Nut 1/4-20 Whiz Lock	2
8	62500446	Tee 1/2 x 1/2 x 1/2 Barb Tee	1	26	62500657	Bracket, Water Meter	1
9	62500439	90° Hose Barb 1/2 H x 1/2 H NY	1	27	950-005-027	Self-Tap Screw 8-18 x 3/8 Hex Head Ab	4
10	625-004-467	Washer, GHT WHT. Rubber	4	28	625-004-483	Solenoid Valve 3 GPM	1
11	62500423	Barb Swivel, 1/2 Hose	4	29	625-005-993	Barb, 1/2 x 1/2 90° Parker	3
12	62500443	Nut-SW., 3/4 GHT	2	30	033-12007	Flat Washer, SAE 5/16 PL	1
13	62501815	Screen, Nozzle 1/2"	1	31	N/A	N/A	N/A
13	62501871	Old Style Nozzle 3/8 With Screen	1	32	*62500661	Assembly, Water Meter Sensor	1
14	62501818	Current Style Nozzle Assembly W/Screen 1/2"	1	33	392-010-019	Self-Tap Screw #6-20 x 3/8 Phillips Pan Head	2
15	N/A	N/A	N/A	34	62500675	Surge Suppressor	2
16	625-002-955	Hex Nut SW 3/8 BLK 3/4 FPS	2	35	62501392	Solenoid Valve, 5 GPM	1
17	N/A	N/A	N/A				

* Recommended Spare Parts ** Additional Recommended Spare Parts

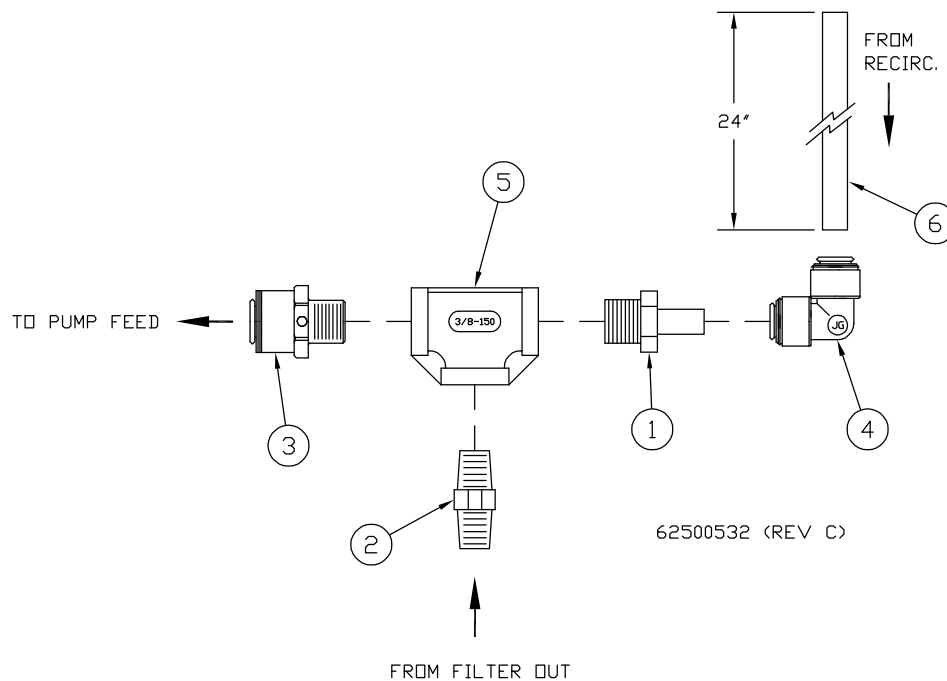
PLUMBING COMPONENTS PRE-FILTER ASSEMBLY



CLIP ART
625-900-206 (REV P)

REF. NO.	PART NUMBER	DESCRIPTION	QTY.	REF. NO.	PART NUMBER	DESCRIPTION	QTY.
1	625-001-929	Hose, PVC Braided 1/2 ID .85 OD	1.5'	7	625-005-193	Valve 2 Way Ball PVC 3/8 F x 3/8 M	1
2	950-005-020	Self Tapping Screw #10 x 3/4	8	8	625-001-560	Filter Housing, Amatek Slim Line	1
3	625-005-935	Fitting Nylon 3/8 x 3/8 Nipple	2	9	625-004-588	Filter, #20 Slim Line Blue 3/8	1
4	625-002-881	Hose Clamp .76-.89 Stepless	2	10	625-900-803	Bracket, Filter	1
5	62500544	Fitting Tee, 3/8 FNPT, 304 SS, 150 LB.	1	11	62500413	Fitting, Nylon ST 3/8 MPT x 3/8 Barb	1
6	62500522	Fitting, 1/2 Stem x 1/2 Barb, JG	1	12	62500430	Fitting, Nylon EL 3/8 MPT x 1/2 Barb	1

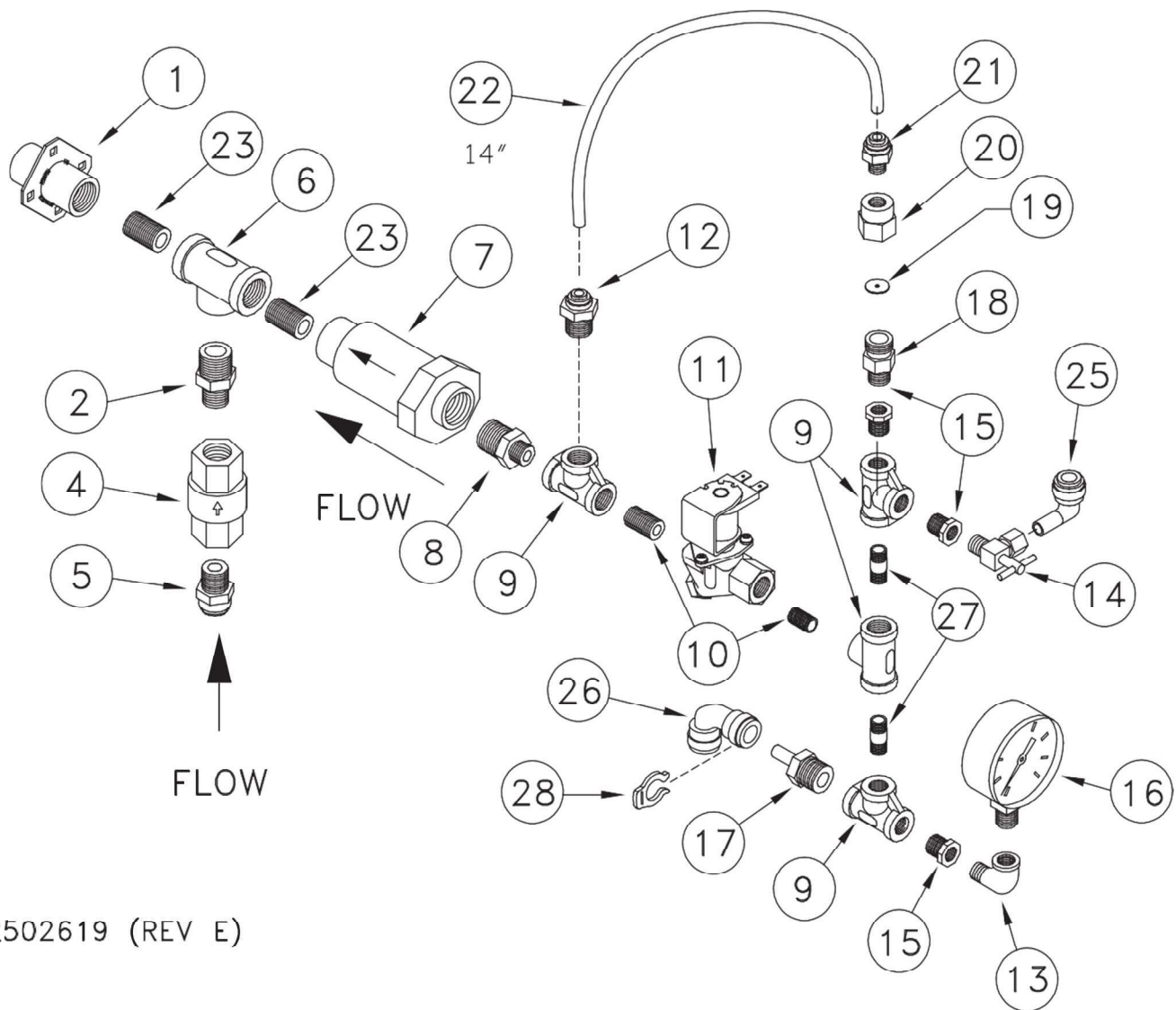
ADDITIONAL PRE-FILTER FITTINGS



REF. NO.	PART NUMBER	DESCRIPTION	QTY.	REF. NO.	PART NUMBER	DESCRIPTION	QTY.
1	625-001-715	Fitting, Comp 3/8 M x 3/8 Stem	1	4	625-005-999	Fitting Union El 3/8"	1
2	625-005-935	Fitting Nylon 3/8 x 3/8 Nipple	1	5	62500544	Fitting, 304 SS 150 lb. Tee 3/8 FNPT	1
3	625-005-976	Fitting 3/8 M x 1/2 T John Guest	1	6	625-001-901	TUBING PE 3/8	2

Recommended Spare Parts Additional Recommended Spare Parts

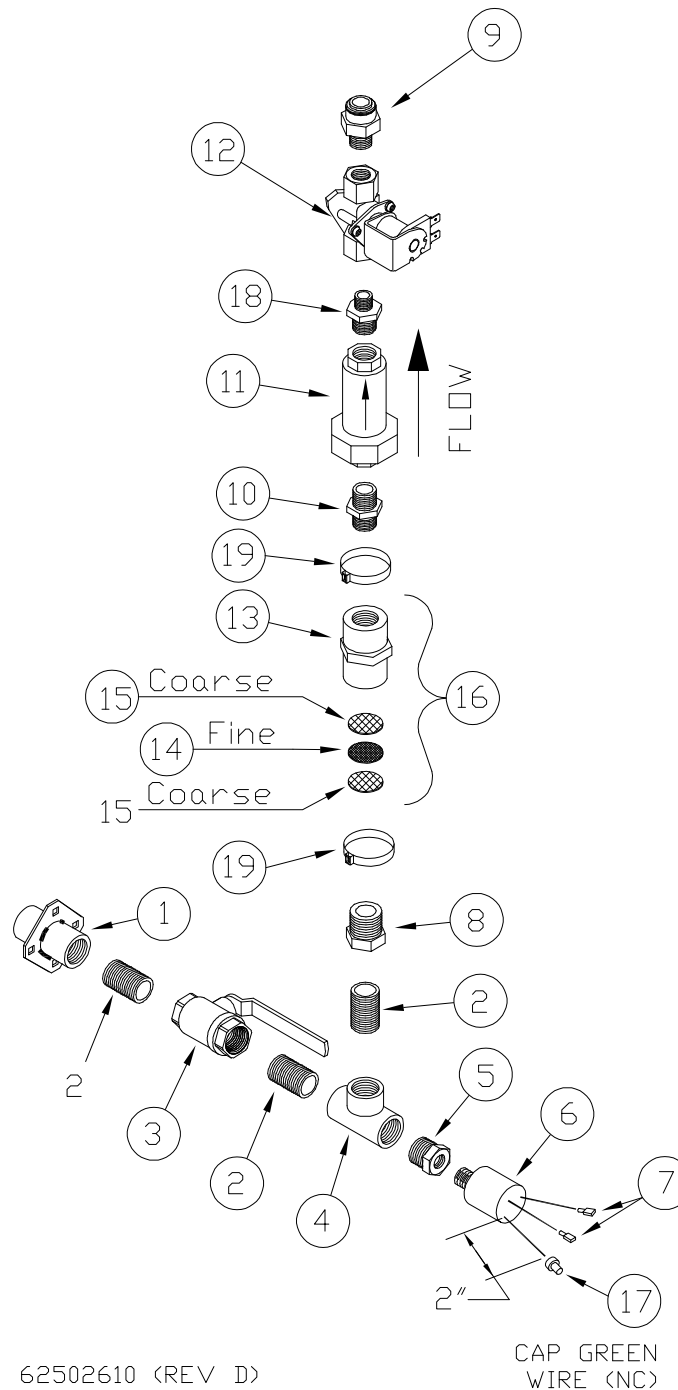
PLUMBING COMPONENTS 1840 WASTE MANIFOLD



62502619 (REV E)

REF. NO.	PART NUMBER	DESCRIPTION	QTY.	REF. NO.	PART NUMBER	DESCRIPTION	QTY.
1	62502608	Weldment, SS Bulkhead 1/2"	1	15	62502633	Fitting, 3/8 x 1/4 SS RB	3
2	62501020	Fitting, Nylon 1/2 x 3/8 Nipple	1	16	62502622	Press Gauge 0-300 PSI Liquid Filled	1
3	NA	NA	NA	17	62500731	Fitting, 1/2 Stem x 3/8 JG	1
4	62501963	Check Valve, 3/8 Poly	1	18	62502616	Body, SS 1/4 MNPT	1
5	625-005-949	Fitting Male Conn 3/8T x 3/8 NPT JG	1	19	62501142	Orifice Plate #75 (XLE Mem Standard)	1
6	62502606	Fitting, SS Tee 1/2 x 1/2 x 1/2	1	19	625-004-270	Orifice Plate #55 (TW30 Mem)	1
7	62502594	Dual Check Valve, 1/2	1	20	62502617	Adapter, 1/4 NPT SS	1
8	62502620	Fitting, SS 1/2 x 3/8 Hex Nipple	1	21	625-004-944	Fitting, 1/4M x 1/4T JG	1
9	62500544	Fitting, SS 3/8 Tee FNPT	4	22	625-001-903	Tubing, 1/4 Pe	1.2
10	62502621	Fitting, SS 3/8 Close Nipple	2	23	62502603	Fitting, SS Nipple 1/2	2
11	62502626	Solenoid, LF Solenoid 3/8	1	25	62500496	Fitting, 3/8 Plug In Elbow, JG	1
12	625-005-940	Fitting, 3/8M x 1/4T JG	1	26	62500524	Fitting, 1/2 Union Elbow JG	1
13	62502669	Fitting, 1/4 Street Elbow SS	1	27	62502634	Fitting, SS Nipple 3/8 x 1 1/2	2
14	62502632	Valve, 1/4 x 3/8T LF Brass	1	28	62501721	Clip 1/2 Lock	1

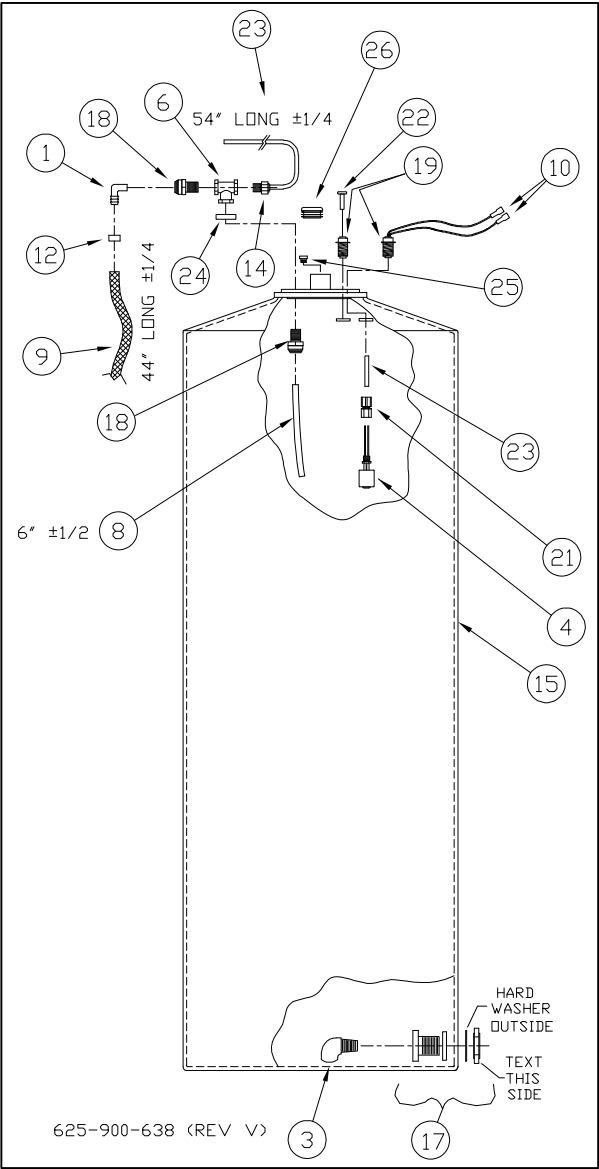
PLUMBING COMPONENTS INLET ASSEMBLY



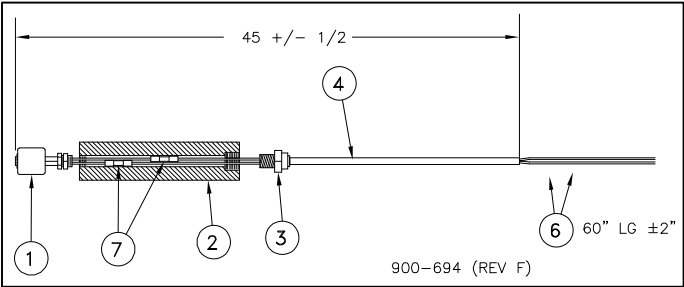
REF. NO.	PART NUMBER	DESCRIPTION	QTY.	REF. NO.	PART NUMBER	DESCRIPTION	QTY.
1	62502608	Weldment, SS Bulkhead, 1/2 Flanged	1	11	62502594	Dual Check Valve, LF 1/2"	1
2	62502603	Fitting, SS Close Nipple 1/2 MNPT	3	12	*62502626	Valve, 3/8 Solenoid 120 VAC LF	1
3	62502596	Valve, SS 2 Way Ball, 1/2 F	1	13	62502611	Fitting, Nylon Reducer Coup 3/4 x 1/2	1
4	62502606	Fitting, SS Tee 1/2 FNPT	1	14	62501752	Strainer, Fine 100 Mesh	1
5	62502716	Fitting, SS RB 1/2 x 1/4	1	15	62501753	Strainer, Coarse 20 Mesh	2
6	62502593	Press Switch, SPDT	1	16	62502612	Strainer Assembly, Inc 13 Thru 15	1
7	62500691	Terminal, Solderless 1/4 M	4	17	62500123	Term, Solderless Cap 22-16 Ga	1
8	62502602	Fitting, SS RB 3/4 x 1/2	1	18	62502620	Fitting, SS 1/2 x 3/8 Nipple	1
9	625-005-976	Fitting, JG 1/2 T x 3/8 M	1	19	62502873	Hose Clamp 1 7/16 Diameter	2
10	62502715	Fitting, SS Nipple 1/2 x 1/2	1				

* Recommended Spare Parts ** Additional Recommended Spare Parts

45 GALLON TANK ASSEMBLY



COIN MECH. UNITS ONLY

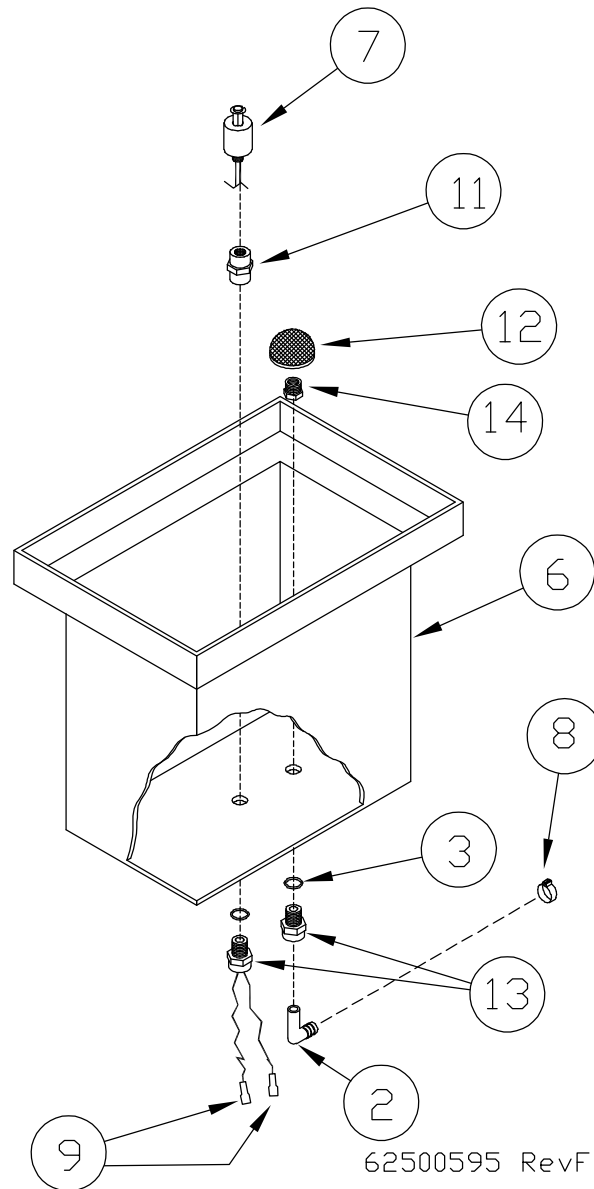


REF NO.	PART NUMBER	DESCRIPTION	QTY
	625-900-694	Complete Float Switch Assy.	1
1	625-001-325	Float Switch	1
2	625-900-693	Adapter, PVC	1
3	625-004-944	Fitting, 1/4T x 1/4 MPT JG	1
4	625-001-903	Tubing, 1/4 PE	3.1
5	N/A	N/A	N/A
6	625-002-294	Wire, Brown 20ga	14 ft
7	625-001-262	Butt Crimp Connector	2

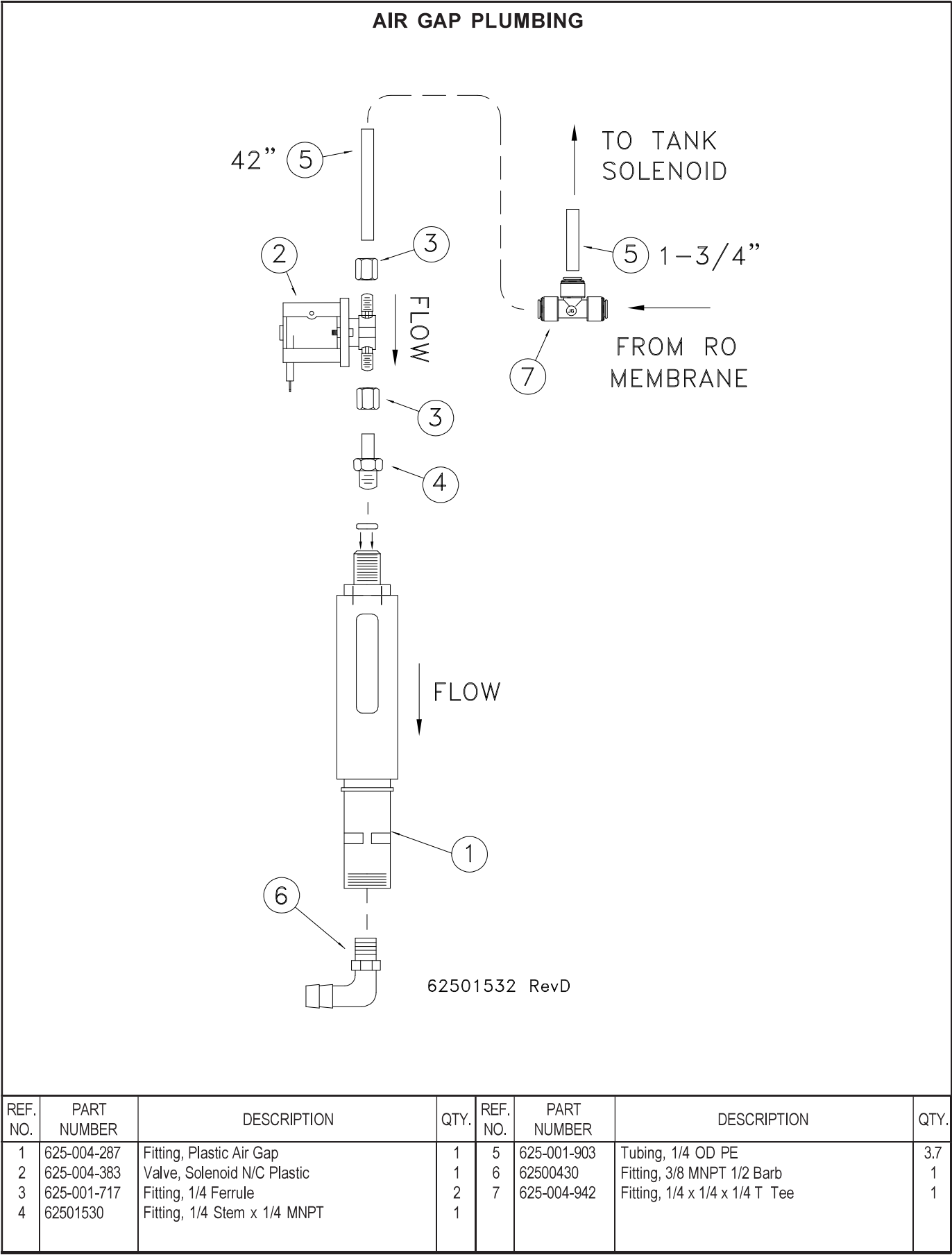
REF. NO.	PART NUMBER	DESCRIPTION	QTY.	REF. NO.	PART NUMBER	DESCRIPTION	QTY.
1	625-005-998	Fitting, Barb 3/8 x 3/8 90°	1	14	625-004-944	Fitting, Connector 1/4 T x 1/4 NPT	1
2	NA	NA	NA	15	625-900-637	Tank, Drilled	1
3	62501655	Adapter-Street 90° 1/2 NPT	1	16	NA	NA	NA
4	*625-001-325	Level Switch	1	17	62502749	Bulkhead 1/2 x 1/2 NPT	1
5	NA	NA	NA	18	62500493	Fitting, 1/4 M x 3/8 T	2
6	625-002-956	Fitting, 1/4 Nylon Tee TT4	1	19	62501722	Fitting, Bulkhead 1/4 T x 1/4 T	2
7	NA	NA	NA	20	62501723	Foam, 1-1/4 SQ x 1-1/2 (Old Style)	2
8	625-001-901	Tubing, PE 3/8 OD	0.5	21	62501724	Fitting 1/4 T x 1/8 FNPT	1
9	625-001-920	Hose, PVC Braided 3/8 ID x 5/8 OD	3.7	22	62500582	Fitting, 1/4 Plug John Guest	1
10	62500691	Quick Slide, 1/4 M 18-22 AWG	2	23	625-001-903	Tubing, PE 1/4	4.7
11	NA	NA	NA	24	625-004-467	Rubber Washer	1
12	625-002-876	Hose Clamp, 14.5mm-17mm OD SS	1	25	62502174	Filter, Tank Breather 1/8 MNPT	1
13	NA	NA	NA	26	62502858	Plug, Plastic 1 3/8 OD	1

* Recommended Spare Parts ** Additional Recommended Spare Parts

DRAIN TANK ASSEMBLY

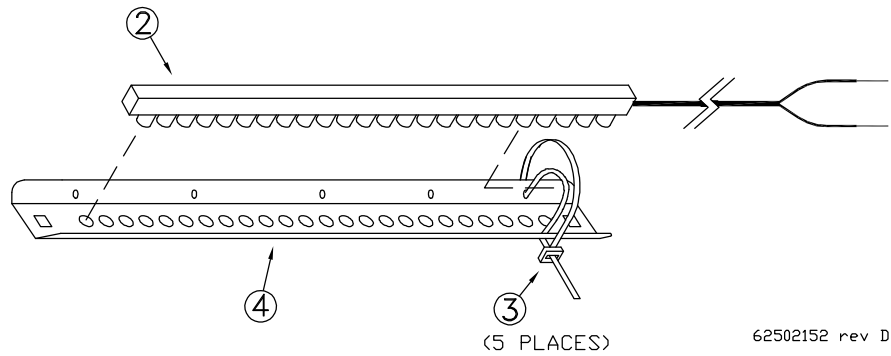


REF. NO.	PART NUMBER	DESCRIPTION	QTY.	REF. NO.	PART NUMBER	DESCRIPTION	QTY.
1	N/A	N/A	1	8	625-002-875	Hose, Clamp .69-.59 OD Plastic	1
2	625-005-998	Fitting, 3/8 Stem x 3/8 Barb JG	1	9	62500691	Terminal, 1/4 M 22-18 Full Ins	2
3	625-001-500	O-Ring, 014 70HD Buna-N	2	10	N/A	N/A	1
4	N/A	N/A	N/A	11	62502748	Fitting, Nylon 1/4 F x 1/8 F	1
5	N/A	N/A	N/A	12	62500984	Strainer	1
6	625-001-121	Tank, Drain 2 Gal (W/O Holes)	1	13	62500493	Fitting, 3/8 T x 1/4 M NPT, JG	2
7	625-001-325	Level Switch	1	14	62500578	Fitting, 3/8 x 1/4 RB	1

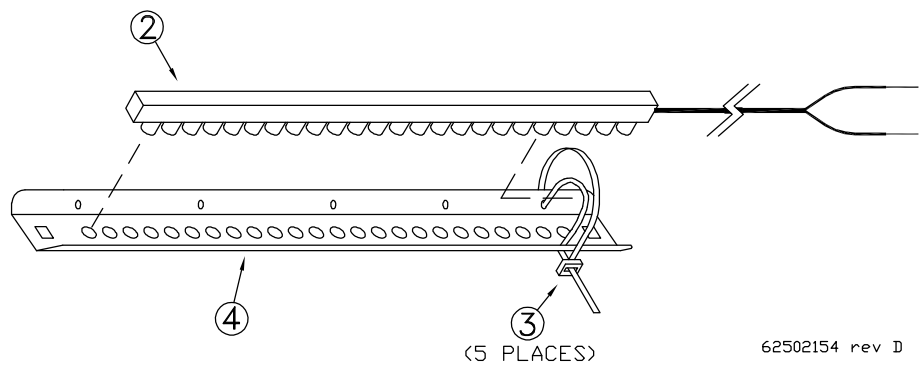


* Recommended Spare Parts ** Additional Recommended Spare Parts

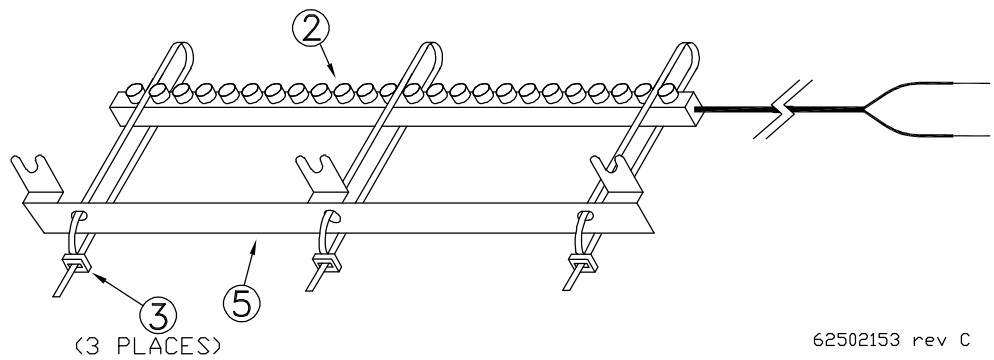
WHITE DISPENSER LED



BLUE DISPENSER LED



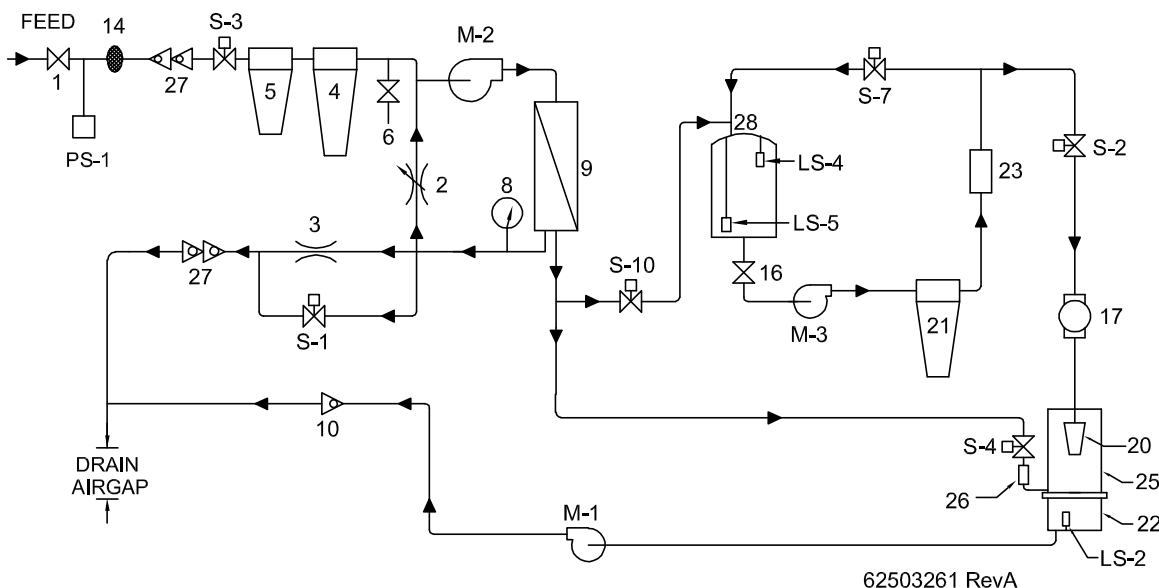
WHITE SELECTION BUTTON LED



REF. NO.	PART NUMBER	DESCRIPTION	QTY.	REF. NO.	PART NUMBER	DESCRIPTION	QTY.
1	N/A	N/A	N/A	3	625-001-469	Wire Tie, Nylon	5
2	62502071	Blue LED Strip 9.5"	1	4	62502073	Bracket, Dispenser Light LED	1
	62502070	White LED Strip 9.5"	2	5	62502072	Bracket, Selection Button LED	1

* Recommended Spare Parts ** Additional Recommended Spare Parts

1840 FLOW DIAGRAM (WITH CLICK PLC)



REF. NO.	PART NUMBER	DESCRIPTION	REF. NO.	PART NUMBER	DESCRIPTION
1	62502596	Ball Valve 1/2" FNPT LF	22	625-001-121	Dispenser Drain Tank, W/O Holes
2	62502632	Needle Valve 1/4 M x 3/8 Comp LF	23	62500859	UV Light Assy with Bulb (120 VAC 50/60HZ)
3	62501142	Orifice Plate #75 (w/XLE-4040 Element)		*62500854	Replacement Bulb
4	625-004-588	Filter Housing #20		62500855	Quartz Sleeve
	*625-005-822	Filter Cartridge, 20" Carbon	24	N/A	N/A
5	625-001-560	Filter Housing 10"	25	N/A	Dispenser Assy
	*625-002-392	Filter Cartridge, 10" Sediment 1 Micron	26	625-004-287	Device, Air Gap
6	625-005-193	Ball Valve, PVC 3/8F	27	62502594	Dual Check Valve, 1/2" LF
7	N/A	N/A	28	625-900-637	Tank 45 Gallon
8	62502622	Pressure Gauge 0-300 PSI Liquid Filled LF	29	N/A	N/A
9	62501528	Vessel Assembly W/O Membrane	30	N/A	N/A
	62501113	Membrane, XLE-4040	LS-2	*625-001-325	Level, Float Switch NC
10	62501963	Check Valve, 3/8 FNPT Poly	LS-4	625-001-325	Level, Float Switch NC
11	N/A	N/A	LS-5	625-001-325	Level, Float Switch NC
12	N/A	N/A	M-1	**62501748	Drain Pump
13	N/A	N/A	M-2	62500484	Motor, 1/2 HP (1840 Series, V-Band Mount)
14	62502612	Strainer Assembly, 1/2 FNPT Nylon		*62502600	Pump, LF Brass 4 GPM V-Band Mount
15	N/A	N/A	M-3	625-004-385	Dispenser Pump, Flojet 3.5 GPM
16	62501652	Ball Valve PVC, 1/2"	PS-1	62502593	Pressure Switch 1/4 MNPT 5 PSI
17	62500658	Water Meter, Plastic (Gallon)	S-1	62502626	Solenoid Valve Brass LF 3/8 FNPT
	62500790	Water Meter, Plastic (Metric Optional)	S-2	**62501392	Solenoid Valve 1/2" 5 GPM
	62500661	Sensor Assembly W/Cable	S-3	62502626	Solenoid Valve Brass LF 3/8" FNPT
18	N/A	N/A	S-4	625-004-383	Solenoid Valve 1/4" NC Plastic
19	N/A	N/A	S-7	625-004-483	Solenoid Valve 3/8" NC Plastic w/Flow Control
20	62501818	Nozzle Assembly, W/Screen 1/2"	S-10	625-004-383	Solenoid Valve 1/4 NC Plastic
	62501815	Nozzle Screen 1/2"		625-001-717	Nut 1/4" Jayco
21	625-001-560	Filter Housing 10"			
	*625-001-574	Filter Carbon 10"			